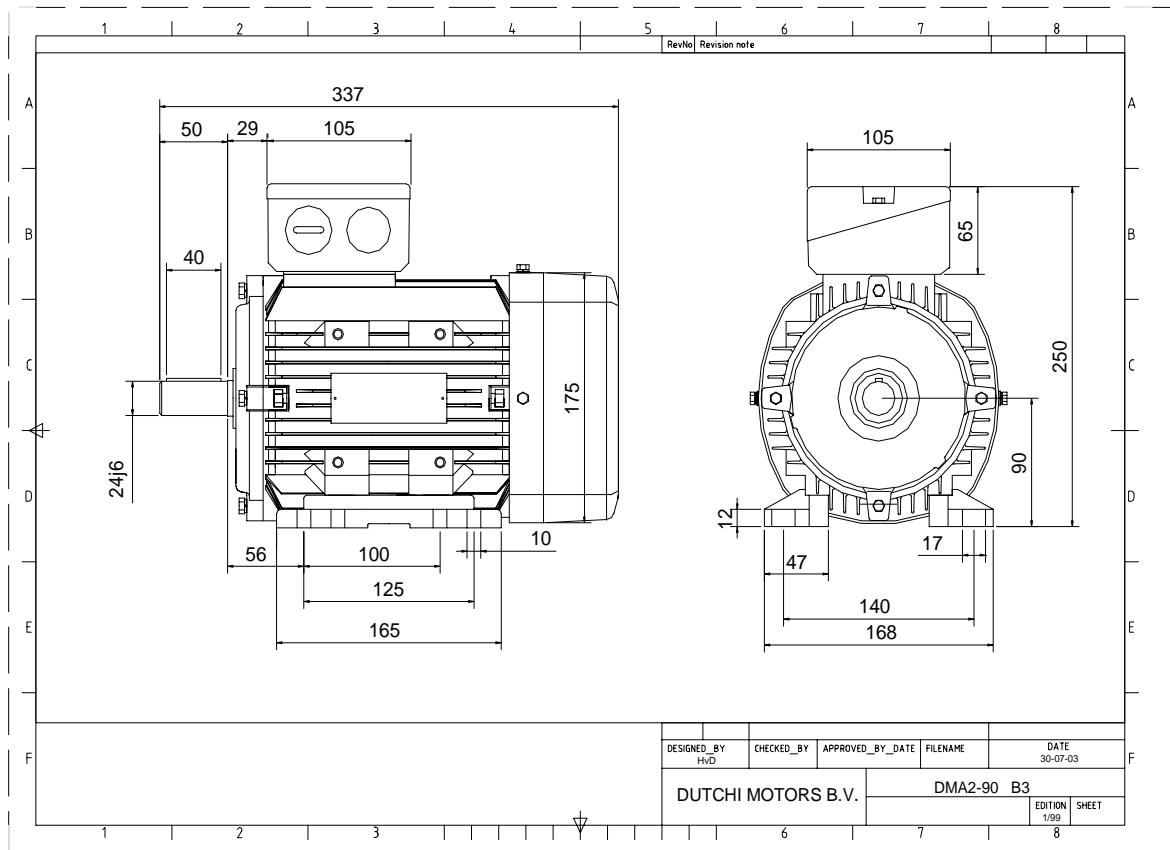




Power is our commodity, the world is our market !



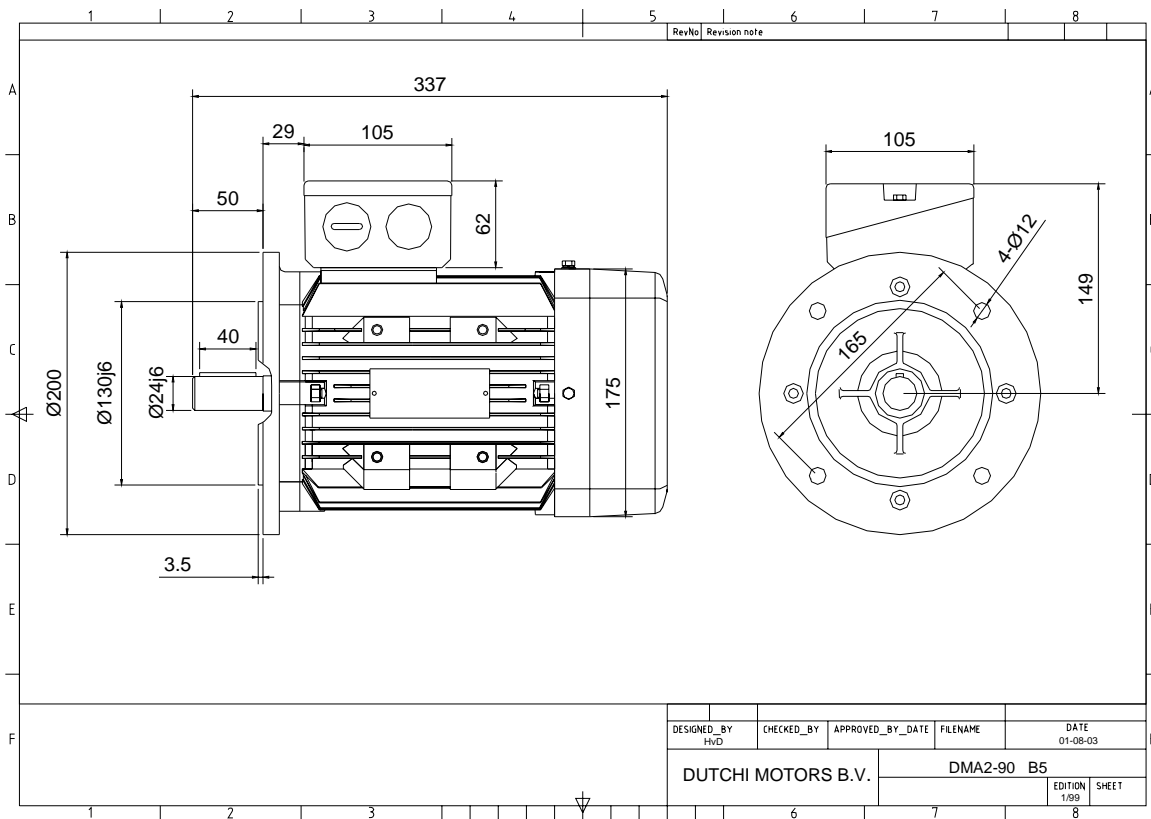
Specification	IEC 60034-1
Manufacturer	Dutchi Motors B.V.
Motor type	DMA2- 90 S8
Rated power	0,37 kW S1 duty
Speed	695 r.p.m
Voltage	230 / 400 V
Frequency	50 Hz
Connection	Δ / Y
Amps full load	2,63 / 1,52 A
Amps no-load(400V)	1,29 A
Enclosure	IP 55
Insulation Class	F (temp. rise B (80 K))
Max. coolant temp.	40°C
Max. altitude	1.000 mtr, above sea level
Comment	
Cable entries	2 x M25x1,5 + 1 x M20x1,5 (ptc)
Feature	Alumimium motor
Weight	12,0 kg
Catalog no.	18128037D
Warranty	12~18 months

Efficiency class	N/A			
Load data	100%	75%	50%	25%
Efficiency	60,6	56,8	49,3	33,8 %
Power factor	0,58	0,50	0,40	0,30
Sound pressure level (1m)				44,2 dB(A)
Resistance R20 (open)				16,38 Ω
Resistance R20	Y		32,76 Ω	
Full load torque				5,08 Nm
DOL Starting torque vs FL torque				2,60
DOL Pull up torque vs FL torque				1,79
DOL Pull out torque vs FL torque				3,13
Star-Delta Starting torque vs FL torque				Y - motor
Star-Delta Pull up torque vs FL torque				Y - motor
Star-Delta Pull out torque vs FL torque				Y - motor
DOL Starting current vs FL current				3,38
Star Delta Starting current vs FL current				Y - motor
Rotor Inertia				0,0032 kgm2
Bearing DE				6205 - ZZ
Bearing NDE				6205 - ZZ

Extras / Options :

WI	Change	date	sign.
Dutchi Motors B.V. P.O. Box 5390 NL-6802 EJ ARNHEM Tel : +31-(0)26 - 3541 600 Fax : +31-(0)26 - 3541 650		Discription	date
		Drawing made by :	19-04-04
		dutchi.motors@dutchi.nl www.dutchi.com	

Power is our commodity, the world is our market !



Specification **IEC 60034-1**
 Manufacturer **Dutchi Motors B.V.**
 Motor type **DMA2- 90 S8**
 Rated power **0,37** kW **S1** duty
 Speed **695** r.p.m
 Voltage **230 / 400** V
 Frequency **50** Hz
 Connection **Δ / Y**
 Amps full load **2,63 / 1,52** A
 Amps no-load(400V) **1,29** A
 Enclosure **IP 55**
 Insulation Class **F (temp. rise B (80 K))**

Max. coolant temp. **40°C**
 Max. altitude **1.000** mtr, above sea level
 Comment
 Cable entries **2 x M25x1,5 + 1 x M20x1,5 (ptc)**

Feature **Alumimium motor**
 Weight **12,0** kg
 Catalog no. **18228037D**
 Warranty **12~18 months**

Efficiency class **N/A**
 Load data 100% 75% 50% 25%
 Efficiency **60,6 56,8 49,3 33,8** %
 Power factor **0,58 0,50 0,40 0,30**

Sound pressure level (1m) **44,2** dB(A)
 Resistance R20 (open) **16,38** Ω
 Resistance R20 **Y 32,76** Ω

Full load torque **5,08** Nm
 DOL Starting torque vs FL torque **2,60**
 DOL Pull up torque vs FL torque **1,79**
 DOL Pull out torque vs FL torque **3,13**
 Star-Delta Starting torque vs FL torque **Y - motor**
 Star-Delta Pull up torque vs FL torque **Y - motor**
 Star-Delta Pull out torque vs FL torque **Y - motor**
 DOL Starting current vs FL current **3,38**
 Star Delta Starting current vs FL current **Y - motor**
 Rotor Inertia **0,0032** kgm²

Bearing DE **6205 - ZZ**
 Bearing NDE **6205 - ZZ**

Extras / Options :

WI	Change	date	sign.
Dutchi Motors B.V.		Description	date
P.O. Box 5390		Drawing made by :	19-04-04
NL-6802 EJ ARNHEM			
Tel : +31-(0)26 - 3541 600		dutchi.motors@dutchi.nl	
Fax : +31-(0)26 - 3541 650		www.dutchi.com	