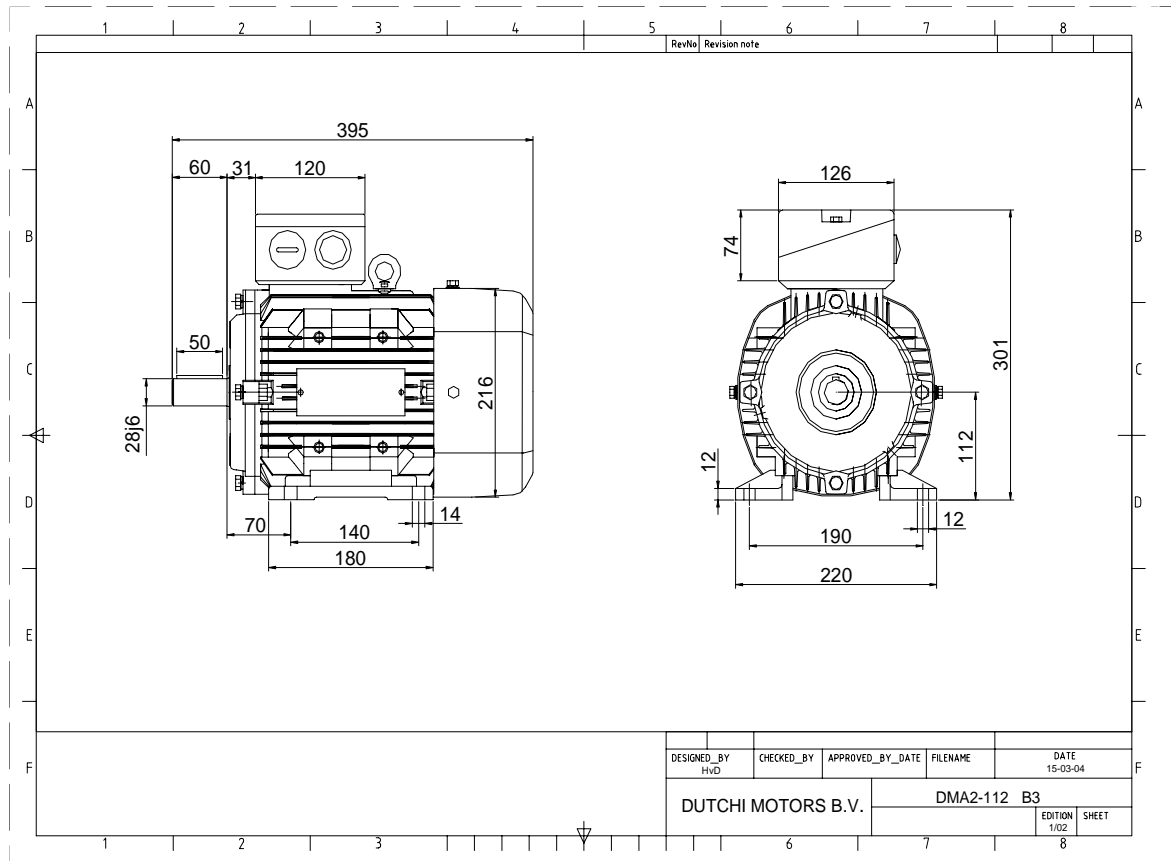


Power is our commodity, the world is our market !



Specification **IEC 60034-1**
 Manufacturer **Dutchi Motors B.V.**
 Motor type **DMA2- 112 M8**
 Rated power **1,50** kW **S1** duty
 Speed **695** r.p.m
 Voltage **230** / **400** V
 Frequency **50** Hz
 Connection **Δ** / **Y**
 Amps full load **7,50** / **4,33** A
 Amps no-load(400V) **3,32** A
 Enclosure **IP 55**
 Insulation Class **F (temp. rise B (80 K))**

Max. coolant temp. **40°C**
 Max. altitude **1.000** mtr, above sea level
 Comment
 Cable entries **2 x M32x1,5**

Feature **Aluminium motor**
 Weight **22,0** kg
 Catalog no. **18128150D**
 Warranty **12~18 months**

Efficiency class **N/A**
 Load data 100% 75% 50% 25%
 Efficiency **73,3 72,3 67,3 53,3** %
 Power factor **0,68 0,58 0,45 0,30**

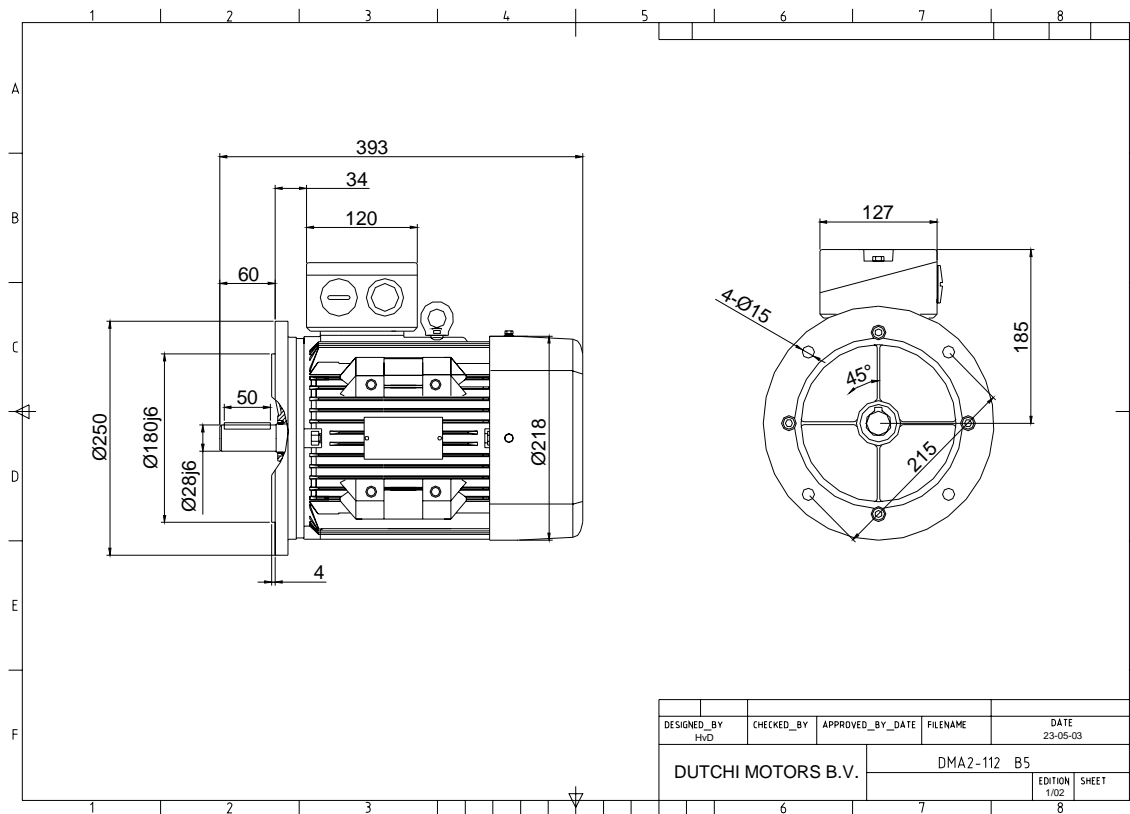
Sound pressure level (1m) **48,1** dB(A)
 Resistance R20 (open) **4,05** Ω
 Resistance R20 **Y 8,11** Ω

Full load torque **20,61** Nm
 DOL Starting torque vs FL torque **2,17**
 DOL Pull up torque vs FL torque **1,52**
 DOL Pull out torque vs FL torque **2,75**
 Star-Delta Starting torque vs FL torque **Y - motor**
 Star-Delta Pull up torque vs FL torque **Y - motor**
 Star-Delta Pull out torque vs FL torque **Y - motor**
 DOL Starting current vs FL current **4,18**
 Star Delta Starting current vs FL current **Y - motor**
 Rotor Inertia **0,0069** kgm2

Bearing DE **6306 - ZZ C3**
 Bearing NDE **6306 - ZZ C3**

WI	Change	date	sign.
Dutchi Motors B.V. P.O. Box 5390 NL-6802 EJ ARNHEM Tel : +31-(0)26 - 3541 600 Fax : +31-(0)26 - 3541 650		Discription	date
		Drawing made by :	05-05-04
		dutchi.motors@dutchi.nl www.dutchi.com	

Power is our commodity, the world is our market !



Specification **IEC 60034-1**
 Manufacturer **Dutchi Motors B.V.**
 Motor type **DMA2- 112 M8**
 Rated power **1,50** kW **S1** duty
 Speed **695** r.p.m
 Voltage **230** / **400** V
 Frequency **50** Hz
 Connection **Δ** / **Y**
 Amps full load **7,50** / **4,33** A
 Amps no-load(400V) **3,32** A
 Enclosure **IP 55**
 Insulation Class **F (temp. rise B (80 K))**

Max. coolant temp. **40°C**
 Max. altitude **1.000** mtr, above sea level
 Comment
 Cable entries **2 x M32x1,5**

Feature **Alumimium motor**
 Weight **22,0** kg
 Catalog no. **18228150D**
 Warranty **12~18 months**

Efficiency class **N/A**

Load data	100%	75%	50%	25%	
Efficiency	73,3	72,3	67,3	53,3	%
Power factor	0,68	0,58	0,45	0,30	

Sound pressure level (1m) **48,1** dB(A)
 Resistance R20 (open) **4,05** Ω
 Resistance R20 **Y** **8,11** Ω

Full load torque **20,61** Nm
 DOL Starting torque vs FL torque **2,17**
 DOL Pull up torque vs FL torque **1,52**
 DOL Pull out torque vs FL torque **2,75**
 Star-Delta Starting torque vs FL torque **Y - motor**
 Star-Delta Pull up torque vs FL torque **Y - motor**
 Star-Delta Pull out torque vs FL torque **Y - motor**
 DOL Starting current vs FL current **4,18**
 Star Delta Starting current vs FL current **Y - motor**
 Rotor Inertia **0,0069** kgm2

Bearing DE **6306 - ZZ C3**
 Bearing NDE **6306 - ZZ C3**

WI	Change	date	sign.
Dutchi Motors B.V. P.O. Box 5390 NL-6802 EJ ARNHEM Tel : +31-(0)26 - 3541 600 Fax : +31-(0)26 - 3541 650		Discription Drawing made by :	date sign. HVD
		dutchi.motors@dutchi.nl www.dutchi.com	