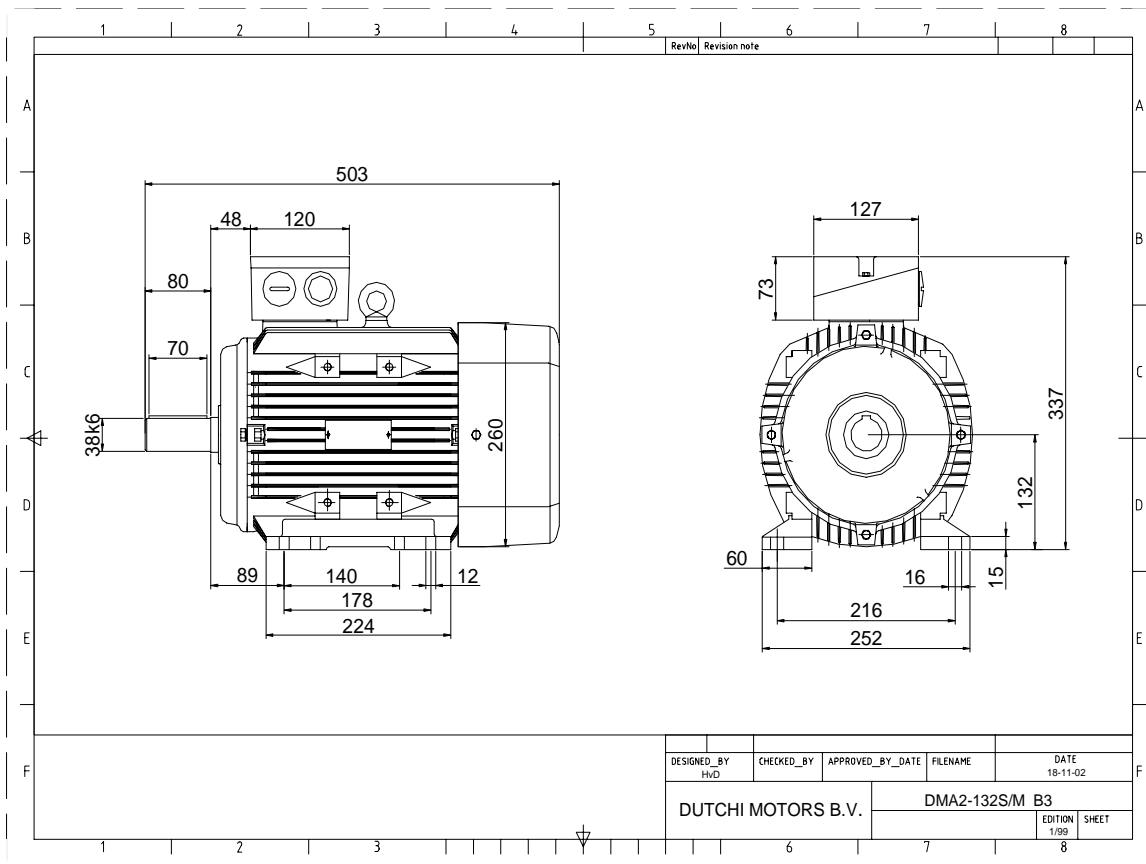


Power is our commodity, the world is our market !



Specification **IEC 60034-1**
 Manufacturer **Dutchi Motors B.V.**
 Motor type **DMA2- 132 S6**
 Rated power **3,00** kW **S1** duty
 Speed **960** r.p.m
 Voltage **400** / **690** V
 Frequency **50** Hz
 Connection **Δ** / **Y**
 Amps full load **7,14** / **4,12** A
 Amps no-load(400V) **4,85** A
 Enclosure **IP 55**
 Insulation Class **F (temp. rise B (80 K))**

Max. coolant temp. **40°C**
 Max. altitude **1.000** mtr, above sea level
 Comment
 Cable entries **2 x M32x1,5**

Feature **Alumimium motor**
 Weight **38,0** kg
 Catalog no. **18136300D**
 Warranty **12~18 months**

Efficiency class **N/A**
 Load data 100% 75% 50% 25%
 Efficiency **79,8 79,1 75,2 62,7** %
 Power factor **0,76 0,68 0,54 0,34**

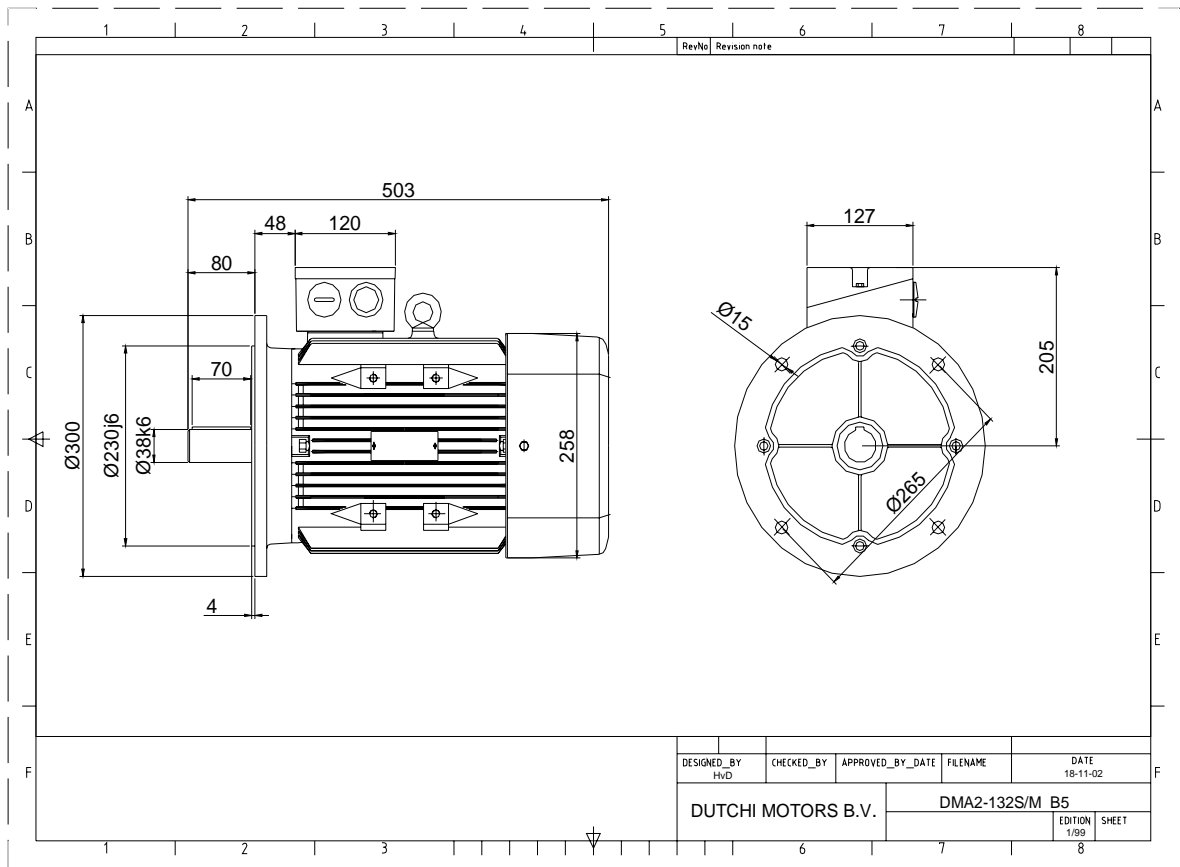
Sound pressure level (1m) **50,1** dB(A)
 Resistance R20 (open) **5,823** Ω
 Resistance R20 **Δ 3,882** Ω

Full load torque **29,8** Nm
 DOL Starting torque vs FL torque **1,92**
 DOL Pull up torque vs FL torque **1,52**
 DOL Pull out torque vs FL torque **3,38**
 Star-Delta Starting torque vs FL torque **0,60**
 Star-Delta Pull up torque vs FL torque **0,48**
 Star-Delta Pull out torque vs FL torque **1,06**
 DOL Starting current vs FL current **6,04**
 Star Delta Starting current vs FL current **1,89**
 Rotor Inertia **0,0129** kgm2

Bearing DE **6308 - ZZ C3**
 Bearing NDE **6308 - ZZ C3**

WI	Change	date	sign.
Dutchi Motors B.V. P.O. Box 5390 NL-6802 EJ ARNHEM Tel : +31-(0)26 - 3541 600 Fax : +31-(0)26 - 3541 650		Discription	date
		Drawing made by :	19-04-04
		dutchi.motors@dutchi.nl www.dutchi.com	

Power is our commodity, the world is our market !



Specification **IEC 60034-1**
 Manufacturer **Dutchi Motors B.V.**
 Motor type **DMA2- 132 S6**
 Rated power **3,00** kW **S1** duty
 Speed **960** r.p.m
 Voltage **400** / **690** V
 Frequency **50** Hz
 Connection **Δ** / **Y**
 Amps full load **7,14** / **4,12** A
 Amps no-load(400V) **4,85** A
 Enclosure **IP 55**
 Insulation Class **F (temp. rise B (80 K))**

Max. coolant temp. **40°C**
 Max. altitude **1.000** mtr, above sea level
 Comment
 Cable entries **2 x M32x1,5**

Feature **Alumimium motor**
 Weight **38,0** kg
 Catalog no. **18236300D**
 Warranty **12~18 months**

Efficiency class **N/A**
 Load data 100% 75% 50% 25%
 Efficiency **79,8 79,1 75,2 62,7** %
 Power factor **0,76 0,68 0,54 0,34**

Sound pressure level (1m) **50,1** dB(A)
 Resistance R20 (open) **5,823** Ω
 Resistance R20 **Δ 3,882** Ω

Full load torque **29,8** Nm
 DOL Starting torque vs FL torque **1,92**
 DOL Pull up torque vs FL torque **1,52**
 DOL Pull out torque vs FL torque **3,38**
 Star-Delta Starting torque vs FL torque **0,60**
 Star-Delta Pull up torque vs FL torque **0,48**
 Star-Delta Pull out torque vs FL torque **1,06**
 DOL Starting current vs FL current **6,04**
 Star Delta Starting current vs FL current **1,89**
 Rotor Inertia **0,0129** kgm2

Bearing DE **6308 - ZZ C3**
 Bearing NDE **6308 - ZZ C3**

WI	Change	date	sign.
Dutchi Motors B.V. P.O. Box 5390 NL-6802 EJ ARNHEM Tel : +31-(0)26 - 3541 600 Fax : +31-(0)26 - 3541 650		Description	date
		Drawing made by :	19-04-04
		dutchi.motors@dutchi.nl www.dutchi.com	