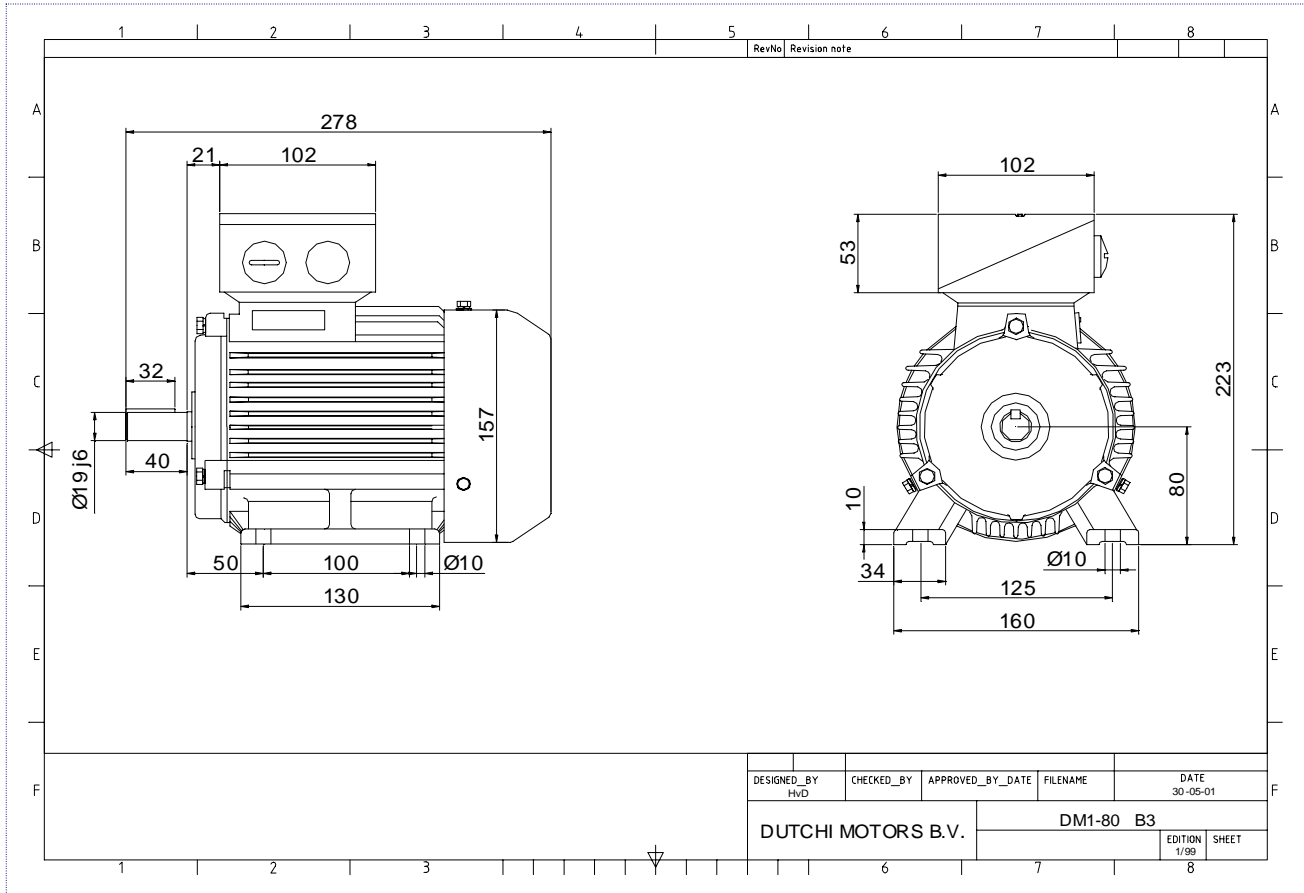


Power is our commodity, the world is our market !



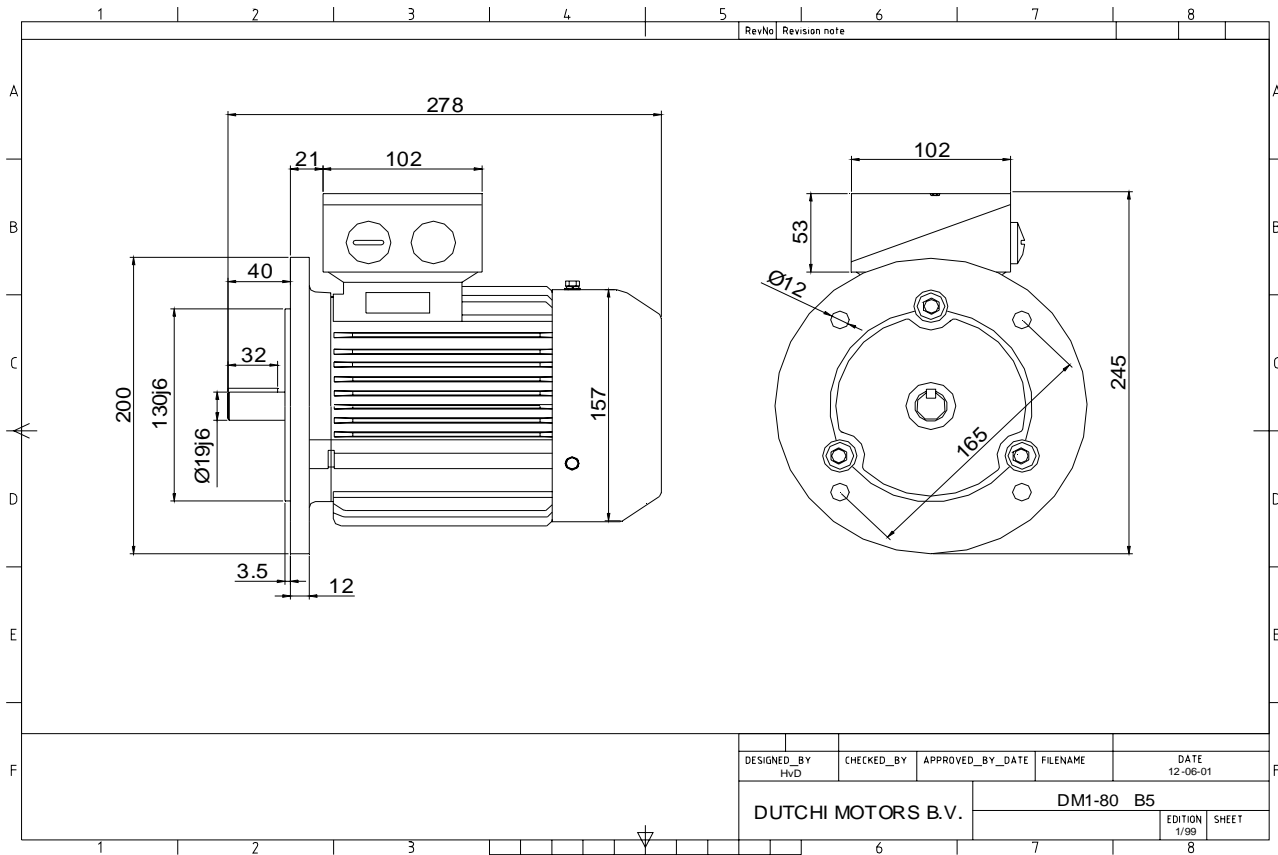
Specification	IEC 60034-1
Manufacturer	Dutchi Motors B.V.
Motor type	DM1- 80 K8
Rated power	0,18 kW S1 duty
Speed	695 r.p.m
Voltage	230 / 400 V
Frequency	50 Hz
Connection	Δ / Y
Amps full load	1,42 / 0,82 A
Amps no-load(400V)	0,80 A
Enclosure	IP 55
Insulation Class	F (temp. rise B (80 K))
Max. coolant temp.	40°C
Max. altitude	1.000 mtr, above sea level
Comment	3 x PTC 150°C
Cable entries	2 x M25x1,5 + 1 x M20x1,5 (ptc)
Feature	Cast-iron motor
Weight	19,0 kg
Catalog no.	11128018D
Warranty	12~18 months

Efficiency class	N/A			
Load data	100%	75%	50%	25%
Efficiency	53,6	50,7	41,5	23,8 %
Power factor	0,59	0,52	0,42	0,32
Sound pressure level (1m)	40,0			dB(A)
Resistance R20 (open)	37,25			Ω
Resistance R20	Y	74,50		Ω
Full load torque	2,47			Nm
DOL Starting torque vs FL torque	2,47			
DOL Pull up torque vs FL torque	1,74			
DOL Pull out torque vs FL torque	3,15			
Star-Delta Starting torque vs FL torque	Y - motor			
Star-Delta Pull up torque vs FL torque	Y - motor			
Star-Delta Pull out torque vs FL torque	Y - motor			
DOL Starting current vs FL current	2,89			
Star Delta Starting current vs FL current	Y - motor			
Rotor Inertia	0,0016			kgm2
Bearing DE	6204 - ZZ			
Bearing NDE	6204 - ZZ			

Extras / Options :

WI	Change	date	sign.
Dutchi Motors B.V. P.O. Box 5390 NL-6802 EJ ARNHEM Tel : +31-(0)26 - 3541 600 Fax : +31-(0)26 - 3541 650		Discription Drawing made by :	date 19-04-04
dutchi.motors@dutchi.nl www.dutchi.com		sign. HvD	

Power is our commodity, the world is our market !



Specification	IEC 60034-1
Manufacturer	Dutchi Motors B.V.
Motor type	DM1- 80 K8
Rated power	0,18 kW S1 duty
Speed	695 r.p.m
Voltage	230 / 400 V
Frequency	50 Hz
Connection	Δ / Y
Amps full load	1,42 / 0,82 A
Amps no-load(400V)	0,80 A
Enclosure	IP 55
Insulation Class	F (temp. rise B (80 K))
Max. coolant temp.	40°C
Max. altitude	1.000 mtr, above sea level
Comment	3 x PTC 150°C
Cable entries	2 x M25x1,5 + 1 x M20x1,5 (ptc)
Feature	Cast-iron motor
Weight	19,0 kg
Catalog no.	11228018D
Warranty	12~18 months

Efficiency class	N/A			
Load data	100%	75%	50%	25%
Efficiency	53,6	50,7	41,5	23,8 %
Power factor	0,59	0,52	0,42	0,32
Sound pressure level (1m)				40,0 dB(A)
Resistance R20 (open)				37,25 Ω
Resistance R20	Y		74,50	Ω
Full load torque				2,47 Nm
DOL Starting torque vs FL torque				2,47
DOL Pull up torque vs FL torque				1,74
DOL Pull out torque vs FL torque				3,15
Star-Delta Starting torque vs FL torque				Y - motor
Star-Delta Pull up torque vs FL torque				Y - motor
Star-Delta Pull out torque vs FL torque				Y - motor
DOL Starting current vs FL current				2,89
Star Delta Starting current vs FL current				Y - motor
Rotor Inertia				0,0016 kgm ²
Bearing DE				6204 - ZZ
Bearing NDE				6204 - ZZ

Extras / Options :

WI	Change	date	sign.
Dutchi Motors B.V. P.O. Box 5390 NL-6802 EJ ARNHEM Tel : +31-(0)26 - 3541 600 Fax : +31-(0)26 - 3541 650		Discription Drawing made by :	date 19-04-04 sign. HvD
dutchi.motors@dutchi.nl www.dutchi.com			