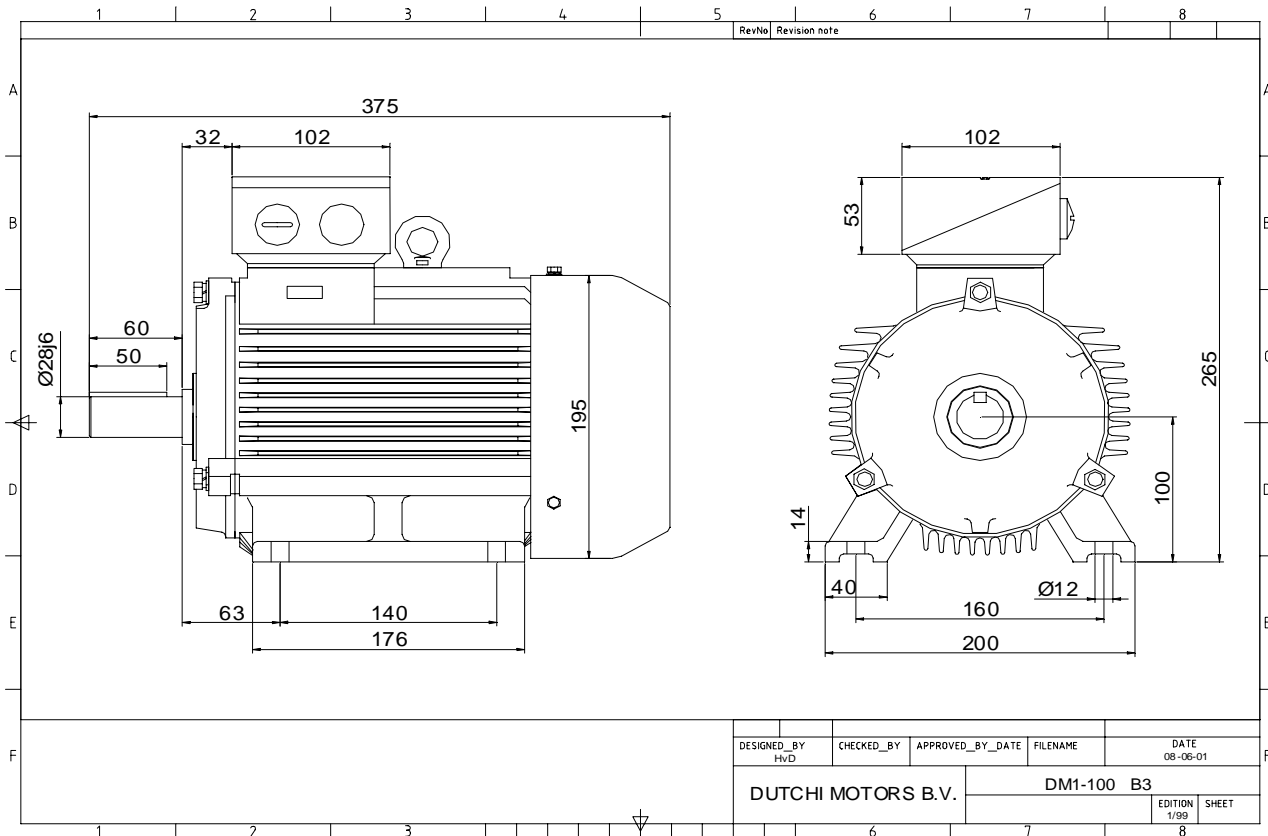


Power is our commodity, the world is our market !



Specification **IEC 60034-1**
 Manufacturer **Dutchi Motors B.V.**
 Motor type **DM1- 100 LX4**
 Rated power **3** kW **S1** duty
 Speed **1410** r.p.m
 Voltage **400** / **690** V
 Frequency **50** Hz
 Connection **Δ** / **Y**
 Amps full load **6,29** / **3,63** A
 Amps no-load(400V) **3,60** A
 Enclosure **IP 55**
 Insulation Class **F (temp. rise B (80 K))**

Max. coolant temp. **40°C**
 Max. altitude **1.000** mtr, above sea level
 Comment **3 x PTC 150°C**
 Cable entries **2 x M25x1,5 + 1 x M20x1,5 (ptc)**

Feature **Cast-iron motor**
 Weight **38,0** kg
 Catalog no. **11134300D**
 Warranty **12~18 months**

Efficiency class **EFF 2**
 Load data 100% 75% 50% 25%
 Efficiency **82,6 81,9 78,4 69,2** %
 Power factor **0,83 0,75 0,59 0,41**

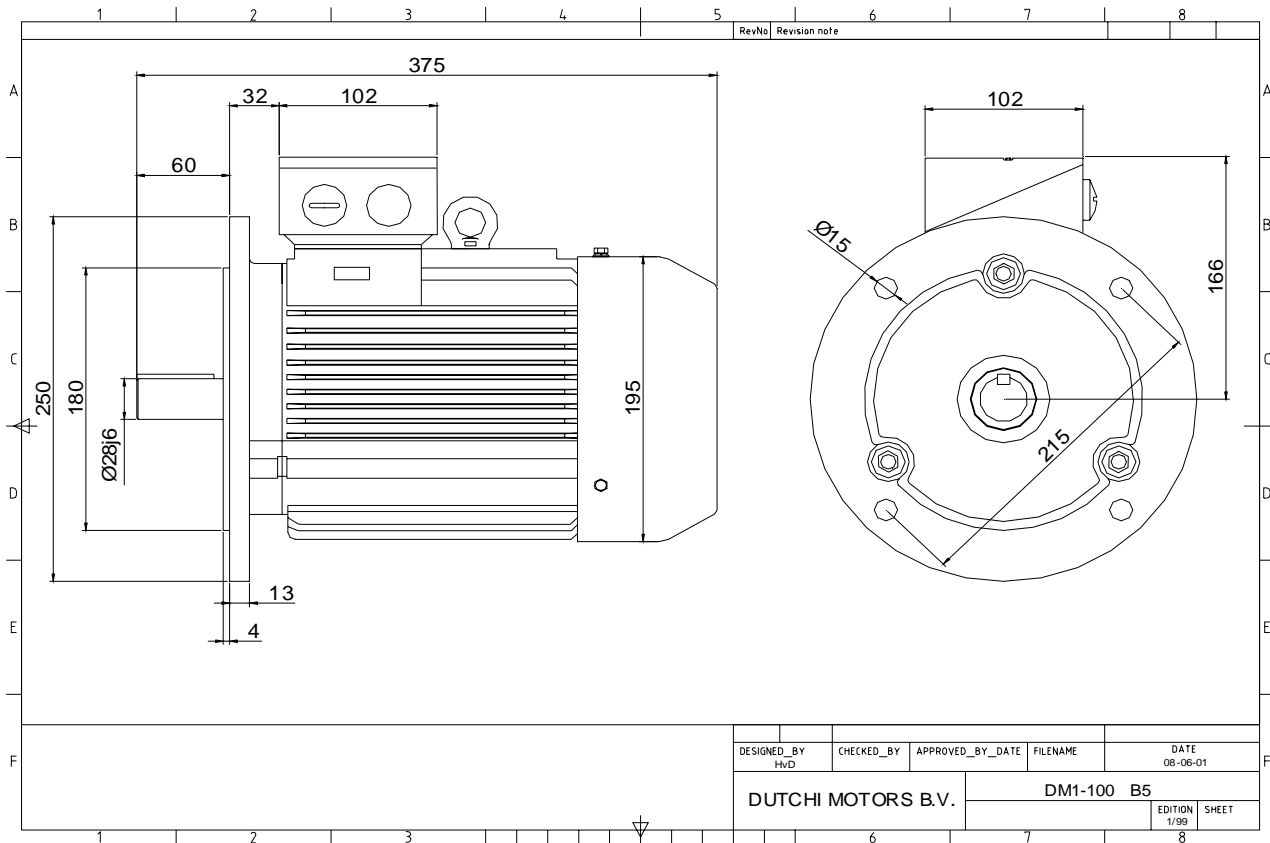
Sound pressure level (1m) **45,8** dB(A)
 Resistance R20 (open) **5,32** Ω
 Resistance R20 **Δ 3,55** Ω

Full load torque **20,32** Nm
 DOL Starting torque vs FL torque **2,80**
 DOL Pull up torque vs FL torque **2,04**
 DOL Pull out torque vs FL torque **3,90**
 Star-Delta Starting torque vs FL torque **0,87**
 Star-Delta Pull up torque vs FL torque **0,64**
 Star-Delta Pull out torque vs FL torque **1,22**
 DOL Starting current vs FL current **7,02**
 Star Delta Starting current vs FL current **2,19**
 Rotor Inertia **0,0067** kgm²

Bearing DE **6206 - ZZ C3**
 Bearing NDE **6206 - ZZ C3**

WI	Change	date	sign.
Dutchi Motors B.V. P.O. Box 5390 NL-6802 EJ ARNHEM Tel : +31-(0)26 - 3541 600 Fax : +31-(0)26 - 3541 650		Discription Drawing made by : 19-04-04	date sign. HvD
dutchi.motors@dutchi.nl www.dutchi.com			

Power is our commodity, the world is our market !



Specification	IEC 60034-1
Manufacturer	Dutchi Motors B.V.
Motor type	DM1- 100 LX4
Rated power	3 kW S1 duty
Speed	1410 r.p.m
Voltage	400 / 690 V
Frequency	50 Hz
Connection	Δ / Y
Amps full load	6,29 / 3,63 A
Amps no-load(400V)	3,60 A
Enclosure	IP 55
Insulation Class	F (temp. rise B (80 K))
Max. coolant temp.	40°C
Max. altitude	1.000 mtr, above sea level
Comment	3 x PTC 150°C
Cable entries	2 x M25x1,5 + 1 x M20x1,5 (ptc)
Feature	Cast-iron motor
Weight	38,0 kg
Catalog no.	11234300D
Warranty	12~18 months

Efficiency class	EFF 2			
Load data	100%	75%	50%	25%
Efficiency	82,6	81,9	78,4	69,2 %
Power factor	0,83	0,75	0,59	0,41
Sound pressure level (1m)				45,8 dB(A)
Resistance R20 (open)				5,32 Ω
Resistance R20	Δ			3,55 Ω
Full load torque				20,32 Nm
DOL Starting torque vs FL torque				2,80
DOL Pull up torque vs FL torque				2,04
DOL Pull out torque vs FL torque				3,90
Star-Delta Starting torque vs FL torque				0,87
Star-Delta Pull up torque vs FL torque				0,64
Star-Delta Pull out torque vs FL torque				1,22
DOL Starting current vs FL current				7,02
Star Delta Starting current vs FL current				2,19
Rotor Inertia				0,0067 kgm ²
Bearing DE				6206 - ZZ C3
Bearing NDE				6206 - ZZ C3

WI	Change	date	sign.
Dutchi Motors B.V. P.O. Box 5390 NL-6802 EJ ARNHEM Tel : +31-(0)26 - 3541 600 Fax : +31-(0)26 - 3541 650		Discription Drawing made by :	date 19-04-04 sign. HvD
dutchi.motors@dutchi.nl www.dutchi.com			