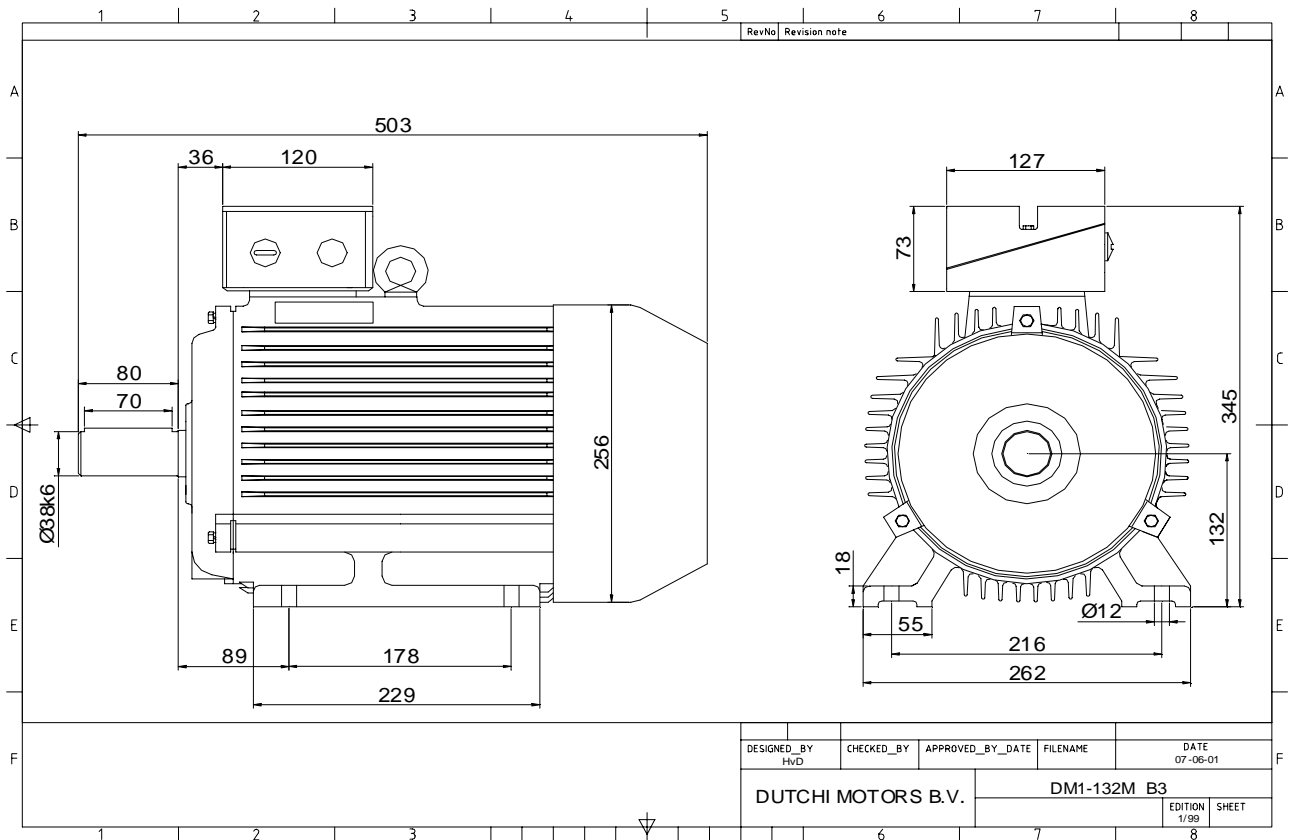


Power is our commodity, the world is our market !



Specification **IEC 60034-1**
 Manufacturer **Dutchi Motors B.V.**
 Motor type **DM1- 132 M6**
 Rated power **4** kW **S1** duty
 Speed **960** r.p.m
 Voltage **400 / 690** V
 Frequency **50** Hz
 Connection **Δ / Y**
 Amps full load **8,90 / 5,14** A
 Amps no-load(400V) **5,30** A
 Enclosure **IP 55**
 Insulation Class **F (temp. rise B (80 K))**

Max. coolant temp. **40°C**
 Max. altitude **1.000** mtr, above sea level
 Comment **3 x PTC 150°C**
 Cable entries **2 x M32x1,5 + 1 x M20x1,5 (ptc)**

Feature **Cast-iron motor**
 Weight **71,0** kg
 Catalog no. **11136400D**
 Warranty **12~18 months**

Efficiency class **N/A**
 Load data 100% 75% 50% 25%
 Efficiency **82,3 81,6 78,6 67,5** %
 Power factor **0,79 0,71 0,58 0,38**

Sound pressure level (1m) **54,3** dB(A)
 Resistance R20 (open) **3,78** Ω
 Resistance R20 **Δ 2,52** Ω

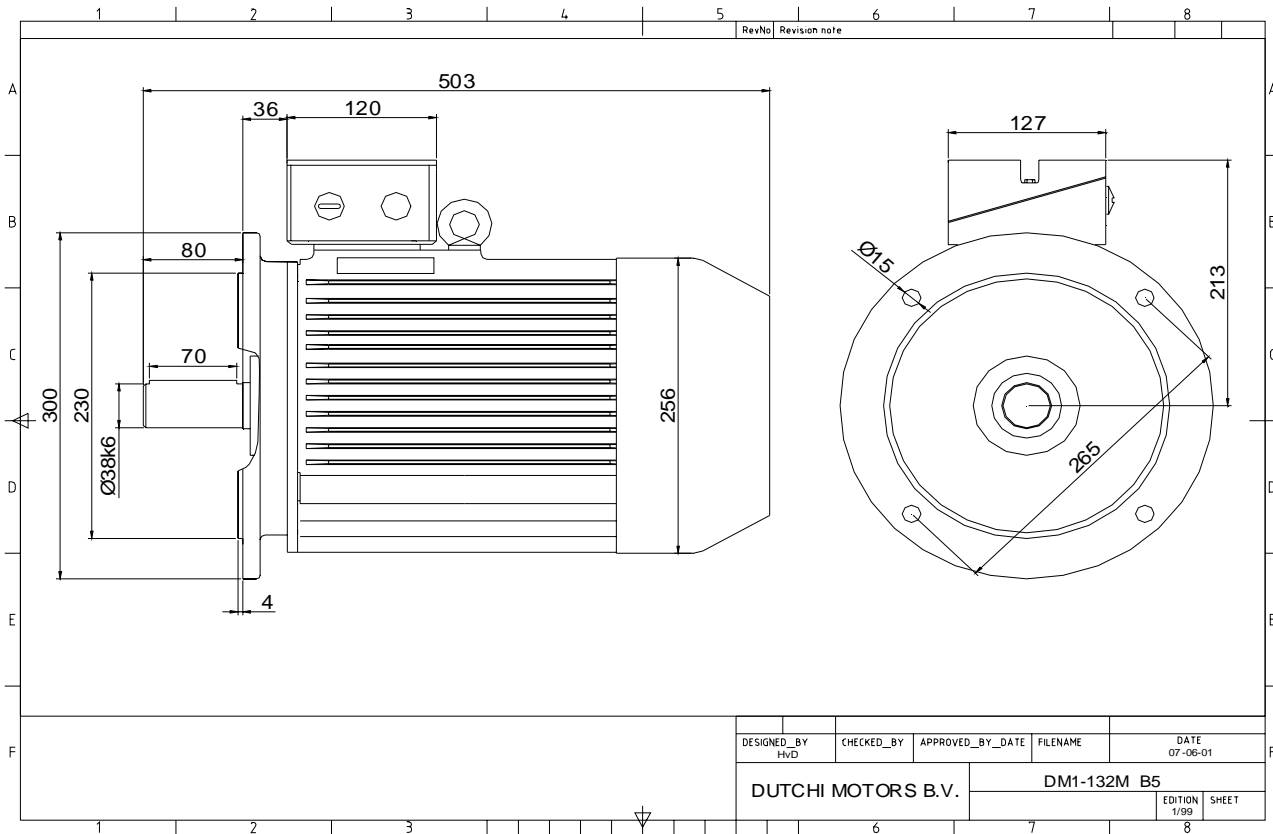
Full load torque **39,79** Nm
 DOL Starting torque vs FL torque **1,77**
 DOL Pull up torque vs FL torque **1,52**
 DOL Pull out torque vs FL torque **3,64**
 Star-Delta Starting torque vs FL torque **0,55**
 Star-Delta Pull up torque vs FL torque **0,47**
 Star-Delta Pull out torque vs FL torque **1,14**
 DOL Starting current vs FL current **6,97**
 Star Delta Starting current vs FL current **2,18**
 Rotor Inertia **0,0343** kgm²

Bearing DE **6308 - ZZ C3**
 Bearing NDE **6308 - ZZ C3**

| |
|--|
| |
| |
| |
| |
| |
| |
| |
| |

| | | | |
|----------------------------|--------|-------------------------|----------|
| WI | Change | date | sign. |
| | | | |
| Dutchi Motors B.V. | | Description | date |
| P.O. Box 5390 | | Drawing made by : | 19-04-04 |
| NL-6802 EJ ARNHEM | | | |
| Tel : +31-(0)26 - 3541 600 | | dutchi.motors@dutchi.nl | |
| Fax : +31-(0)26 - 3541 650 | | www.dutchi.com | |

Power is our commodity, the world is our market !



| | |
|--------------------|--|
| Specification | IEC 60034-1 |
| Manufacturer | Dutchi Motors B.V. |
| Motor type | DM1- 132 M6 |
| Rated power | 4 kW S1 duty |
| Speed | 960 r.p.m |
| Voltage | 400 / 690 V |
| Frequency | 50 Hz |
| Connection | Δ / Y |
| Amps full load | 8,90 / 5,14 A |
| Amps no-load(400V) | 5,30 A |
| Enclosure | IP 55 |
| Insulation Class | F (temp. rise B (80 K)) |
| Max. coolant temp. | 40°C |
| Max. altitude | 1.000 mtr, above sea level |
| Comment | 3 x PTC 150°C |
| Cable entries | 2 x M32x1,5 + 1 x M20x1,5 (ptc) |
| Feature | Cast-iron motor |
| Weight | 71,0 kg |
| Catalog no. | 11236400D |
| Warranty | 12~18 months |

| | | | | |
|---|-------------|-------------|-------------|--------------------------------|
| Efficiency class | N/A | | | |
| Load data | 100% | 75% | 50% | 25% |
| Efficiency | 82,3 | 81,6 | 78,6 | 67,5 % |
| Power factor | 0,79 | 0,71 | 0,58 | 0,38 |
| Sound pressure level (1m) | | | | 54,3 dB(A) |
| Resistance R20 (open) | | | | 3,78 Ω |
| Resistance R20 | Δ | | | 2,52 Ω |
| Full load torque | | | | 39,79 Nm |
| DOL Starting torque vs FL torque | | | | 1,77 |
| DOL Pull up torque vs FL torque | | | | 1,52 |
| DOL Pull out torque vs FL torque | | | | 3,64 |
| Star-Delta Starting torque vs FL torque | | | | 0,55 |
| Star-Delta Pull up torque vs FL torque | | | | 0,47 |
| Star-Delta Pull out torque vs FL torque | | | | 1,14 |
| DOL Starting current vs FL current | | | | 6,97 |
| Star Delta Starting current vs FL current | | | | 2,18 |
| Rotor Inertia | | | | 0,0343 kgm ² |
| Bearing DE | | | | 6308 - ZZ C3 |
| Bearing NDE | | | | 6308 - ZZ C3 |

| |
|--|
| |
| |
| |
| |
| |
| |
| |
| |

| | | | |
|---|--------|---|----------|
| WI | Change | date | sign. |
| | | | |
| Dutchi Motors B.V. P.O. Box 5390 NL-6802 EJ ARNHEM Tel : +31-(0)26 - 3541 600 Fax : +31-(0)26 - 3541 650 | | Description | date |
| | | Drawing made by : | 19-04-04 |
| | | dutchi.motors@dutchi.nl www.dutchi.com | |