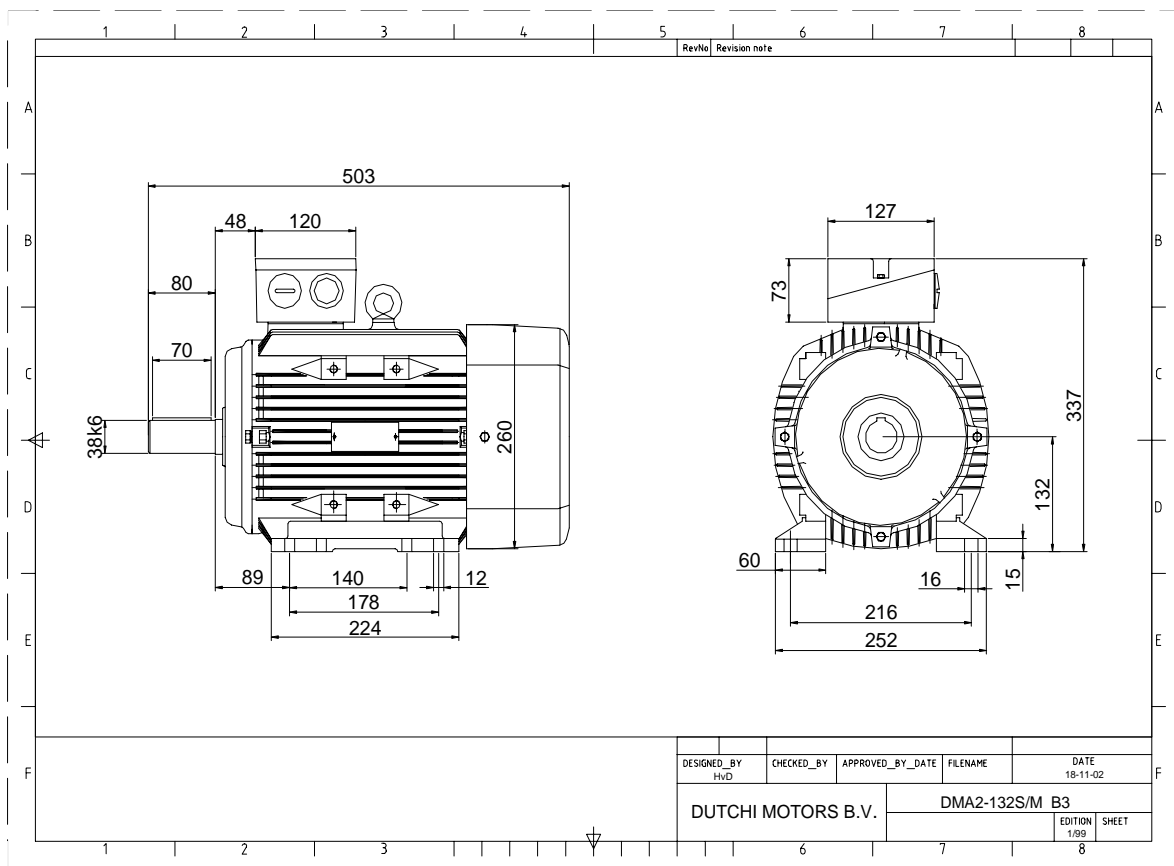


Power is our commodity, the world is our market !



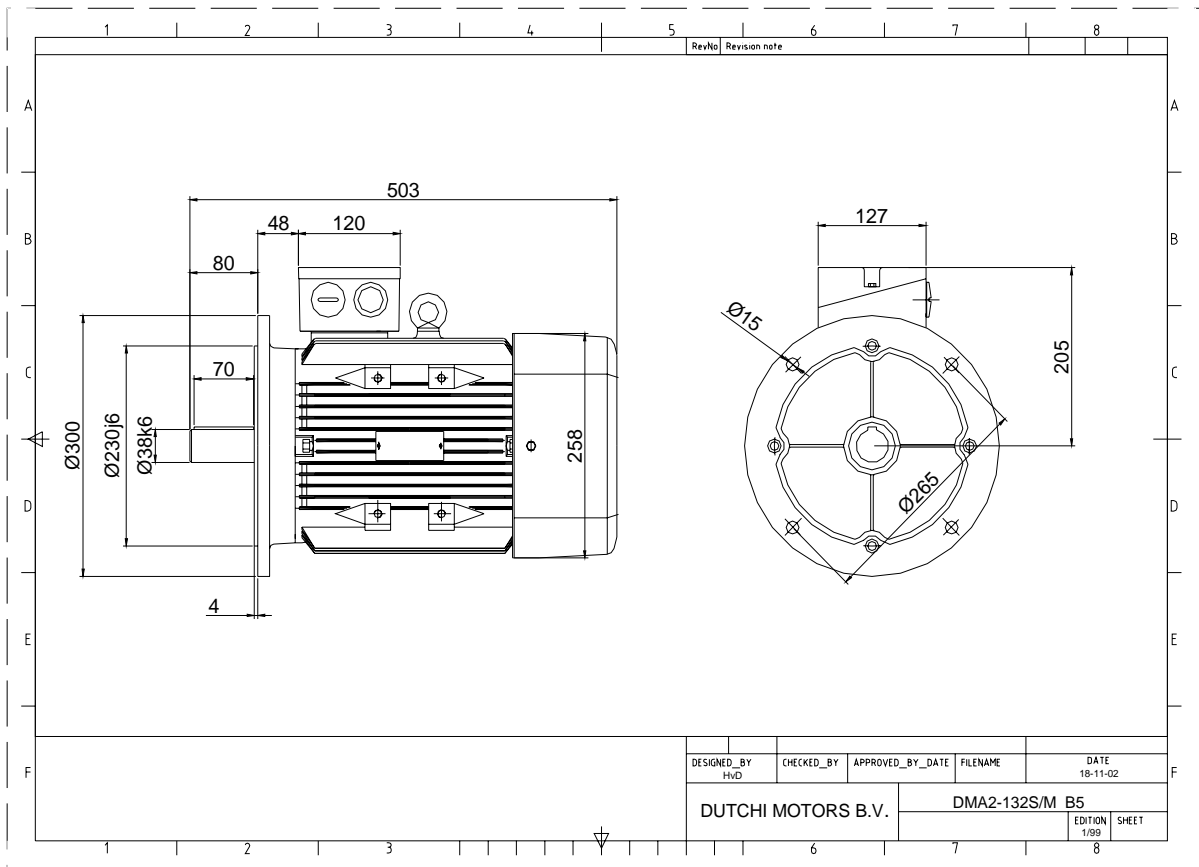
Specification	IEC 60034-1
Manufacturer	Dutchi Motors B.V.
Motor type	DMA2-HE 132S2
Rated power	5,50 kW S1 duty
Speed	2925 r.p.m
Voltage	400 / 690 V
Frequency	50 Hz
Connection	Δ / Y
Amps full load	9,82 / 5,67 A
Amps no-load(400V)	3,20 A
Enclosure	IP 55
Insulation Class	F (temp. rise B (80 K))
Max. coolant temp.	40°C
Max. altitude	1.000 mtr, above sea level
Comment	
Cable entries	2 x M32x1,5
Feature	Alumimium motor
Weight	kg
Catalog no.	18132550DH
Warranty	12~18 months

Efficiency class	EFF 1			
Load data	100%	75%	50%	25%
Efficiency	90,3	90,8	90,0	85,2 %
Power factor	0,90	0,87	0,79	0,59
Sound pressure level (1m)				63,4 dB(A)
Resistance R20 (open)				2,02 Ω
Resistance R20	Δ			1,35 Ω
Full load torque				17,96 Nm
DOL Starting torque vs FL torque				2,17
DOL Pull up torque vs FL torque				1,71
DOL Pull out torque vs FL torque				3,68
Star-Delta Starting torque vs FL torque				0,68
Star-Delta Pull up torque vs FL torque				0,53
Star-Delta Pull out torque vs FL torque				1,15
DOL Starting current vs FL current				8,14
Star Delta Starting current vs FL current				2,54
Rotor Inertia				kgm2
Bearing DE				6308 - ZZ C3
Bearing NDE				6308 - ZZ C3

voorbeelden - extra's

WI	Change	date	sign.
Dutchi Motors B.V. P.O. Box 5390 NL-6802 EJ ARNHEM Tel : +31-(0)26 - 3541 600 Fax : +31-(0)26 - 3541 650		Discription Drawing made by :	date 05-05-04 sign. HvD
		dutchi.motors@dutchi.nl www.dutchi.com	

Power is our commodity, the world is our market !



Specification	IEC 60034-1
Manufacturer	Dutchi Motors B.V.
Motor type	DMA2-HE 132S2
Rated power	5,50 kW S1 duty
Speed	2925 r.p.m
Voltage	400 / 690 V
Frequency	50 Hz
Connection	Δ / Y
Amps full load	9,82 / 5,67 A
Amps no-load(400V)	3,20 A
Enclosure	IP 55
Insulation Class	F (temp. rise B (80 K))
Max. coolant temp.	40°C
Max. altitude	1.000 mtr, above sea level
Comment	
Cable entries	2 x M32x1,5
Feature	Alumimium motor
Weight	kg
Catalog no.	18232550DH
Warranty	12~18 months

Efficiency class	EFF 1			
Load data	100%	75%	50%	25%
Efficiency	90,3	90,8	90,0	85,2 %
Power factor	0,90	0,87	0,79	0,59
Sound pressure level (1m)				63,4 dB(A)
Resistance R20 (open)				2,02 Ω
Resistance R20	Δ			1,35 Ω
Full load torque				17,96 Nm
DOL Starting torque vs FL torque				2,17
DOL Pull up torque vs FL torque				1,71
DOL Pull out torque vs FL torque				3,68
Star-Delta Starting torque vs FL torque				0,68
Star-Delta Pull up torque vs FL torque				0,53
Star-Delta Pull out torque vs FL torque				1,15
DOL Starting current vs FL current				8,14
Star Delta Starting current vs FL current				2,54
Rotor Inertia				kgm2
Bearing DE				6308 - ZZ C3
Bearing NDE				6308 - ZZ C3

voorbeelden - extra's

WI	Change	date	sign.
Dutchi Motors B.V. P.O. Box 5390 NL-6802 EJ ARNHEM Tel : +31-(0)26 - 3541 600 Fax : +31-(0)26 - 3541 650		Discription	date
		Drawing made by :	05-05-04
		dutchi.motors@dutchi.nl www.dutchi.com	