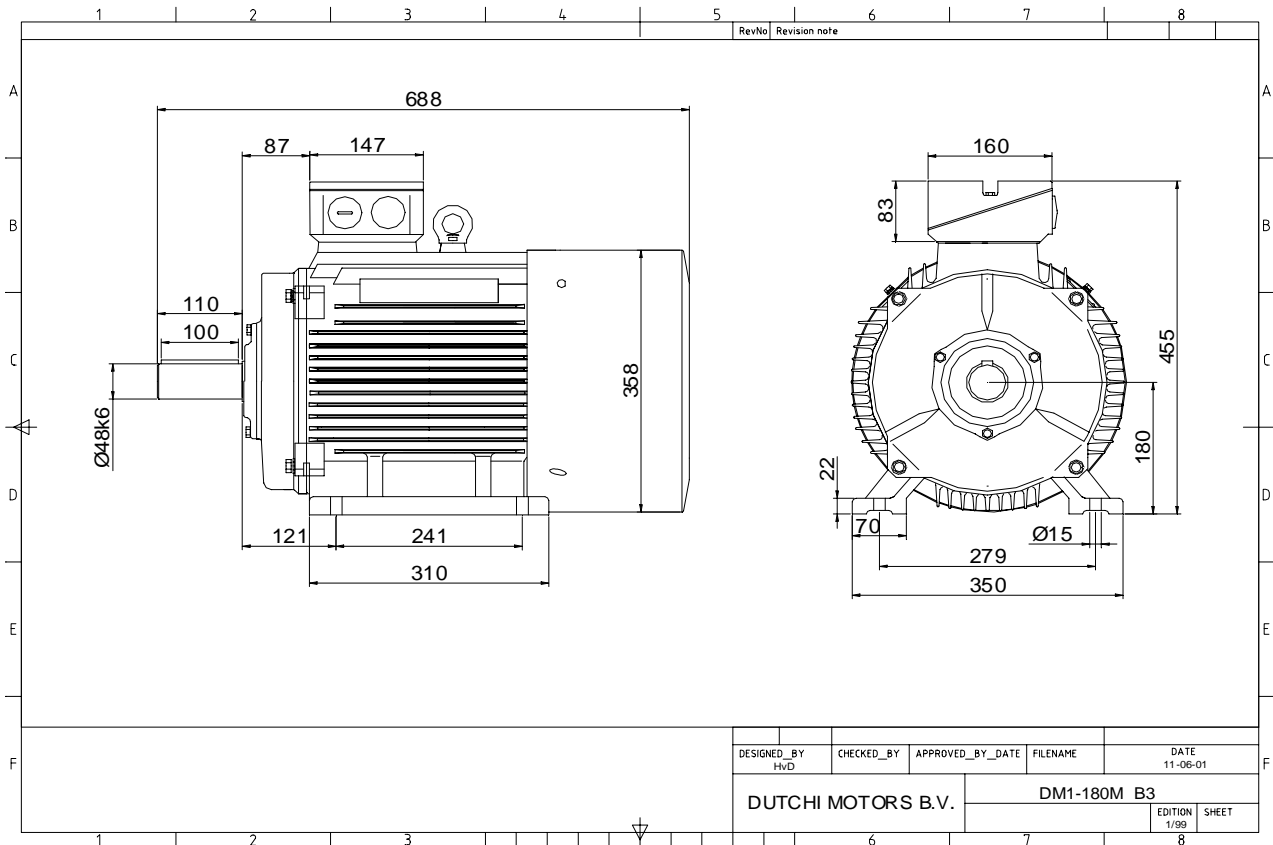


Power is our commodity, the world is our market !



Specification **IEC 60034-1**  
 Manufacturer **Dutchi Motors B.V.**  
 Motor type **DM1-HE 180M4**  
 Rated power **18,50** kW **S1** duty  
 Speed **1470** r.p.m  
 Voltage **400** / **690** V  
 Frequency **50** Hz  
 Connection **Δ** / **Y**  
 Amps full load **33,4** / **19,3** A  
 Amps no-load(400V) **13,30** A  
 Enclosure **IP 55**  
 Insulation Class **F (temp. rise B (80 K))**

Max. coolant temp. **40°C**  
 Max. altitude **1.000** mtr, above sea level  
 Comment **3 x PTC 150°C**  
 Cable entries **2 x M40x1,5 + 1 x M20x1,5 (ptc)**

Feature **Cast-iron motor**  
 Weight kg  
 Catalog no. **11134A18DH**  
 Warranty **12~18 months**

Efficiency class **EFF 1**  
 Load data 100% 75% 50% 25%  
 Efficiency **92,5 92,6 91,8 87,3** %  
 Power factor **0,86 0,83 0,73 0,52**

Sound pressure level (1m) **55,5** dB(A)  
 Resistance R20 (open) **0,378** Ω  
 Resistance R20 **Δ 0,252** Ω

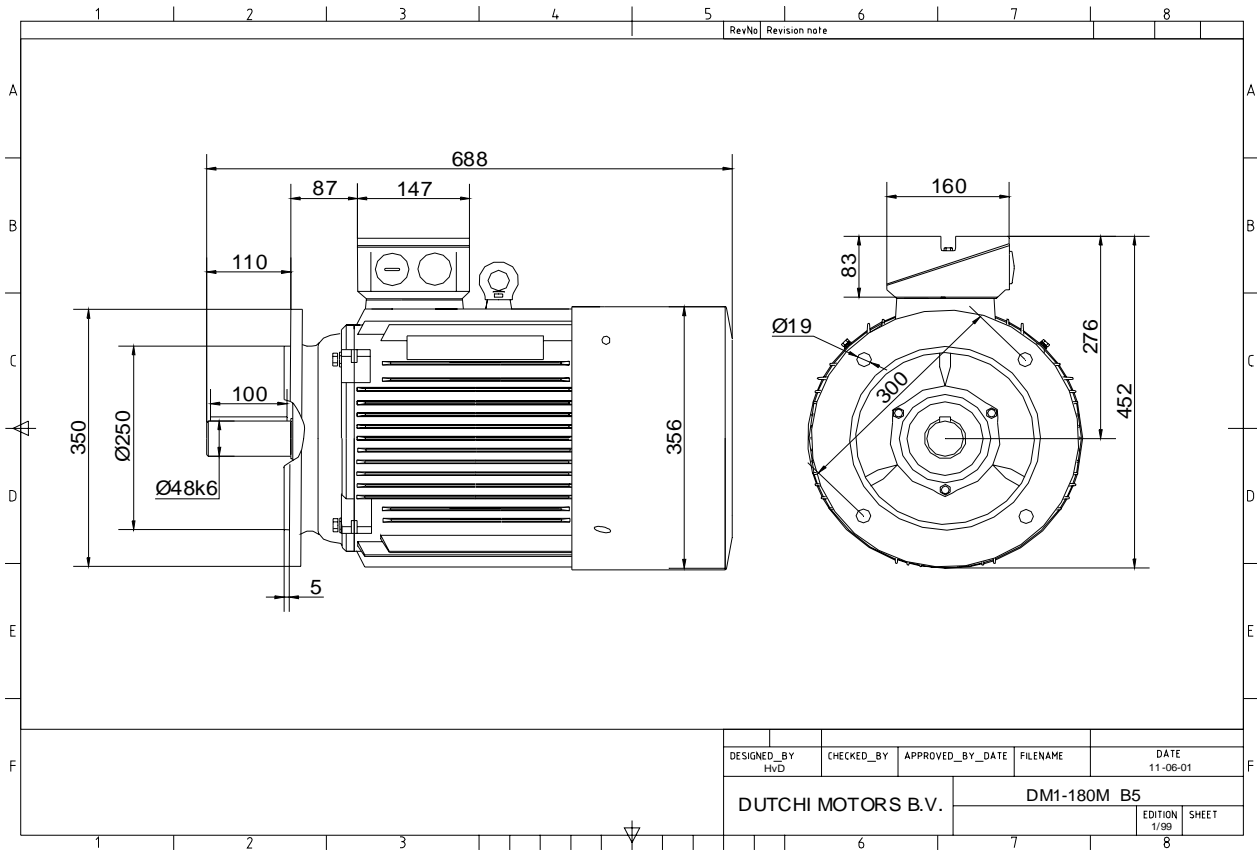
Full load torque **120** Nm  
 DOL Starting torque vs FL torque **2,24**  
 DOL Pull up torque vs FL torque **1,68**  
 DOL Pull out torque vs FL torque **3,48**  
 Star-Delta Starting torque vs FL torque **0,70**  
 Star-Delta Pull up torque vs FL torque **0,53**  
 Star-Delta Pull out torque vs FL torque **1,09**  
 DOL Starting current vs FL current **7,40**  
 Star Delta Starting current vs FL current **2,31**

Rotor Inertia **kgm2**

Bearing DE **6311 - ZZ C3**  
 Bearing NDE **6311 - ZZ C3**


WI	Change	date	sign.
Dutchi Motors B.V.		Description	date
P.O. Box 5390		Drawing made by :	27-04-04
NL-6802 EJ ARNHEM			
Tel : +31-(0)26 - 3541 600		dutchi.motors@dutchi.nl	
Fax : +31-(0)26 - 3541 650		www.dutchi.com	

Power is our commodity, the world is our market !



DESIGNED_BY HVD	CHECKED_BY	APPROVED_BY_DATE	FILENAME	DATE 11-06-01
DUTCHI MOTORS B.V.			DM1-180M B5	
			EDITION 1/99	SHEET

**Specification IEC 60034-1**  
**Manufacturer Dutchi Motors B.V.**  
**Motor type DM1-HE 180M4**  
**Rated power 18,50 kW S1 duty**  
**Speed 1470 r.p.m**  
**Voltage 400 / 690 V**  
**Frequency 50 Hz**  
**Connection Δ / Y**  
**Amps full load 33,4 / 19,3 A**  
**Amps no-load(400V) 13,30 A**  
**Enclosure IP 55**  
**Insulation Class F (temp. rise B (80 K))**  
  
**Max. coolant temp. 40°C**  
**Max. altitude 1.000 mtr, above sea level**  
**Comment 3 x PTC 150°C**  
**Cable entries 2 x M40x1,5 + 1 x M20x1,5 (ptc)**  
  
**Feature Cast-iron motor**  
**Weight kg**  
**Catalog no. 11234A18DH**  
**Warranty 12~18 months**

**Efficiency class EFF 1**  
**Load data 100% 75% 50% 25%**  
**Efficiency 92,5 92,6 91,8 87,3 %**  
**Power factor 0,86 0,83 0,73 0,52**  
  
**Sound pressure level (1m) 55,5 dB(A)**  
**Resistance R20 (open) 0,378 Ω**  
**Resistance R20 Δ 0,252 Ω**  
  
**Full load torque 120 Nm**  
**DOL Starting torque vs FL torque 2,24**  
**DOL Pull up torque vs FL torque 1,68**  
**DOL Pull out torque vs FL torque 3,48**  
**Star-Delta Starting torque vs FL torque 0,70**  
**Star-Delta Pull up torque vs FL torque 0,53**  
**Star-Delta Pull out torque vs FL torque 1,09**  
**DOL Starting current vs FL current 7,40**  
**Star Delta Starting current vs FL current 2,31**  
  
**Rotor Inertia kgm2**  
  
**Bearing DE 6311 - ZZ C3**  
**Bearing NDE 6311 - ZZ C3**


WI	Change	date	sign.
<b>Dutchi Motors B.V.</b> P.O. Box 5390 NL-6802 EJ ARNHEM Tel : +31-(0)26 - 3541 600 Fax : +31-(0)26 - 3541 650		Discription Drawing made by : 27-04-04	date sign. HVD
dutchi.motors@dutchi.nl www.dutchi.com			