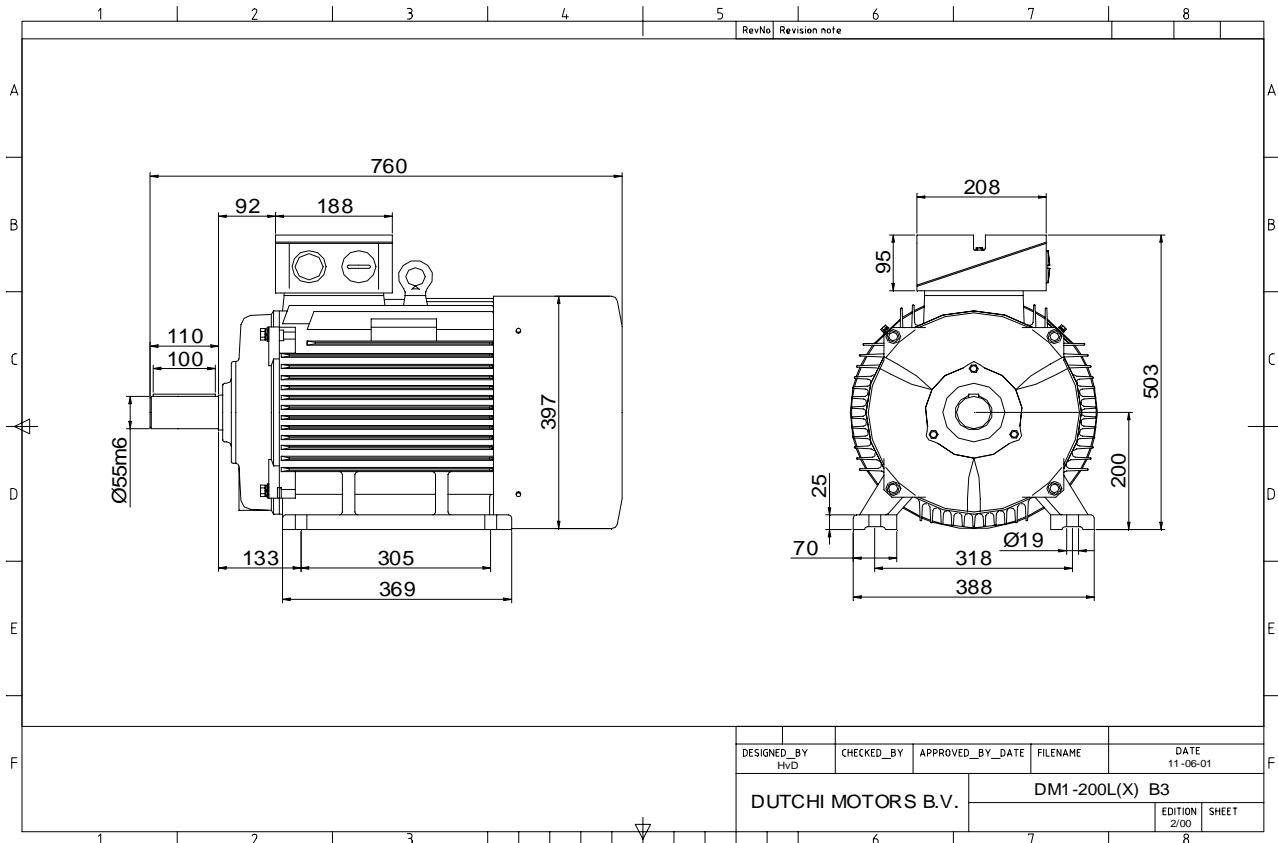


Power is our commodity, the world is our market !



Specification **IEC 60034-1**  
 Manufacturer **Dutchi Motors B.V.**  
 Motor type **DM1-HE 200L2**  
 Rated power **30,0** kW **S1** duty  
 Speed **2945** r.p.m  
 Voltage **400** / **690** V  
 Frequency **50** Hz  
 Connection **Δ** / **Y**  
 Amps full load **50,7** / **29,3** A  
 Amps no-load(400V) **10,20** A  
 Enclosure **IP 55**  
 Insulation Class **F (temp. rise B (80 K))**

Max. coolant temp. **40°C**  
 Max. altitude **1.000** mtr, above sea level  
 Comment **3 x PTC 150°C**  
 Cable entries **2 x M50x1,5 + 1 x M20x1,5 (ptc)**

Feature **Cast-iron motor**  
 Weight **kg**  
 Catalog no. **11132A30DH**  
 Warranty **12~18 months**

Efficiency class **EFF 1**  
 Load data 100% 75% 50% 25%  
 Efficiency **93,1 93,1 92,1 87,3** %  
 Power factor **0,92 0,92 0,88 0,74**

Sound pressure level (1m) **80,0** dB(A)  
 Resistance R20 (open) **0,181** Ω  
 Resistance R20 **Δ 0,120** Ω

Full load torque **97** Nm  
 DOL Starting torque vs FL torque **2,26**  
 DOL Pull up torque vs FL torque **1,66**  
 DOL Pull out torque vs FL torque **3,31**  
 Star-Delta Starting torque vs FL torque **0,71**  
 Star-Delta Pull up torque vs FL torque **0,52**  
 Star-Delta Pull out torque vs FL torque **1,03**  
 DOL Starting current vs FL current **7,66**  
 Star Delta Starting current vs FL current **2,39**

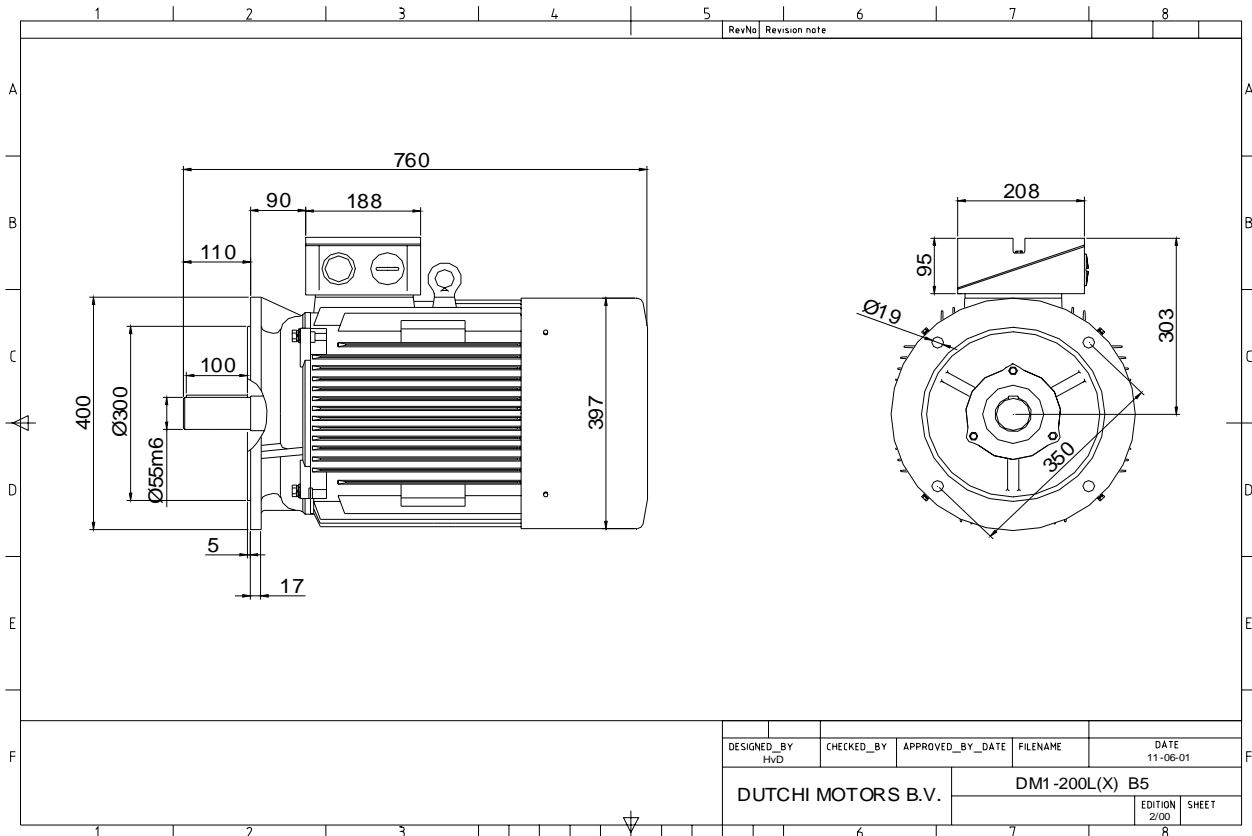
Rotor Inertia **kgm2**

Bearing DE **6312 - ZZ C3**  
 Bearing NDE **6312 - ZZ C3**

|  |
|--|
|  |
|  |
|  |
|  |
|  |
|  |
|  |
|  |

|                            |        |                         |          |
|----------------------------|--------|-------------------------|----------|
| WI                         | Change | date                    | sign.    |
|                            |        |                         |          |
| Dutchi Motors B.V.         |        | Description             | date     |
| P.O. Box 5390              |        | Drawing made by :       | 27-04-04 |
| NL-6802 EJ ARNHEM          |        |                         |          |
| Tel : +31-(0)26 - 3541 600 |        | dutchi.motors@dutchi.nl |          |
| Fax : +31-(0)26 - 3541 650 |        | www.dutchi.com          |          |

Power is our commodity, the world is our market !



Specification **IEC 60034-1**  
 Manufacturer **Dutchi Motors B.V.**  
 Motor type **DM1-HE 200L2**  
 Rated power **30,0** kW **S1** duty  
 Speed **2945** r.p.m  
 Voltage **400** / **690** V  
 Frequency **50** Hz  
 Connection **Δ** / **Y**  
 Amps full load **50,7** / **29,3** A  
 Amps no-load(400V) **10,20** A  
 Enclosure **IP 55**  
 Insulation Class **F (temp. rise B (80 K))**

Max. coolant temp. **40°C**  
 Max. altitude **1.000** mtr, above sea level  
 Comment **3 x PTC 150°C**  
 Cable entries **2 x M50x1,5 + 1 x M20x1,5 (ptc)**

Feature **Cast-iron motor**  
 Weight **kg**  
 Catalog no. **11232A30DH**  
 Warranty **12~18 months**

Efficiency class **EFF 1**  
 Load data 100% 75% 50% 25%  
 Efficiency **93,1 93,1 92,1 87,3** %  
 Power factor **0,92 0,92 0,88 0,74**

Sound pressure level (1m) **80,0** dB(A)  
 Resistance R20 (open) **0,181** Ω  
 Resistance R20 **Δ 0,120** Ω

Full load torque **97** Nm  
 DOL Starting torque vs FL torque **2,26**  
 DOL Pull up torque vs FL torque **1,66**  
 DOL Pull out torque vs FL torque **3,31**  
 Star-Delta Starting torque vs FL torque **0,71**  
 Star-Delta Pull up torque vs FL torque **0,52**  
 Star-Delta Pull out torque vs FL torque **1,03**  
 DOL Starting current vs FL current **7,66**  
 Star Delta Starting current vs FL current **2,39**

Rotor Inertia **kgm2**

Bearing DE **6312 - ZZ C3**  
 Bearing NDE **6312 - ZZ C3**

|  |
|--|
|  |
|  |
|  |
|  |
|  |
|  |
|  |
|  |

| WI  | Change | date                                      | sign.                |
|---|--------|---|----------------------|
|   |        |   |                      |
| <b>Dutchi Motors B.V.</b><br>P.O. Box 5390<br>NL-6802 EJ ARNHEM<br>Tel : +31-(0)26 - 3541 600<br>Fax : +31-(0)26 - 3541 650 |        | Discription<br>Drawing made by : 27-04-04 | date<br>sign.<br>HvD |
| dutchi.motors@dutchi.nl<br>www.dutchi.com   |        |   |                      |