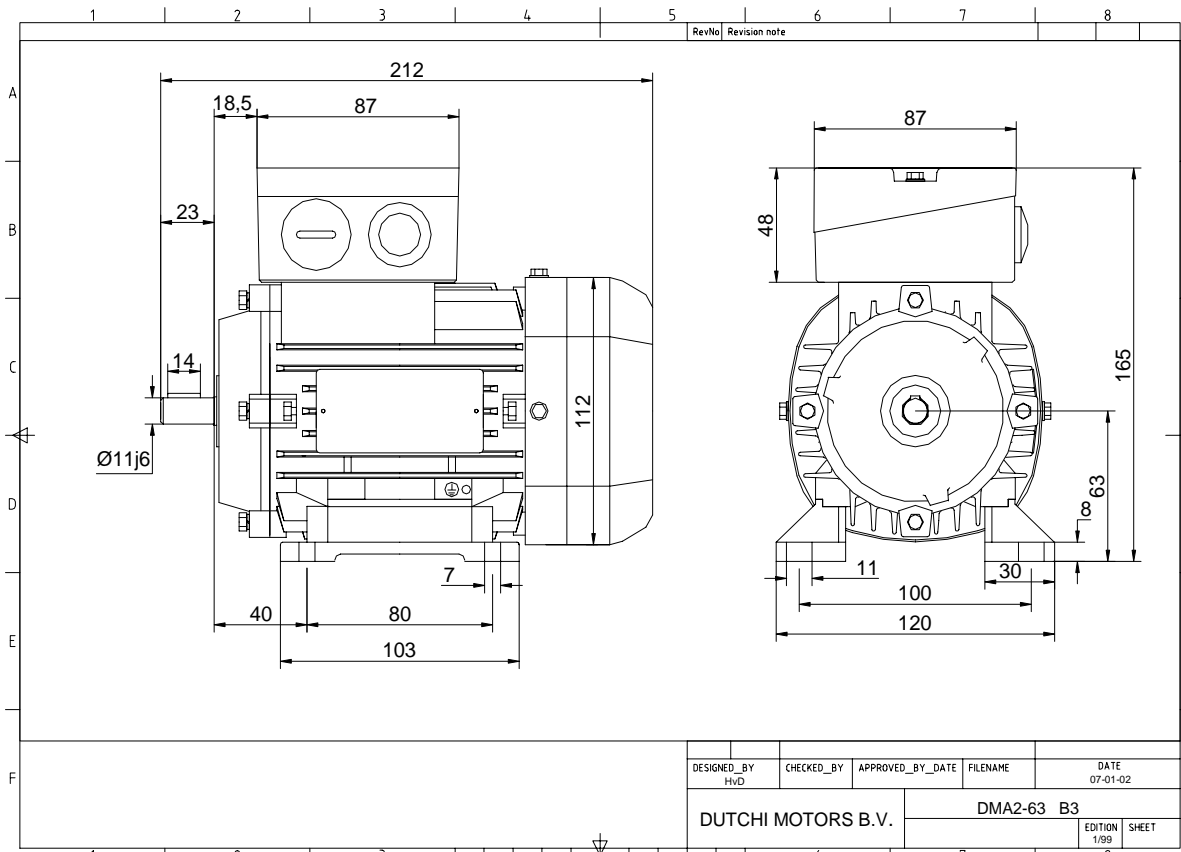


Power is our commodity, the world is our market !

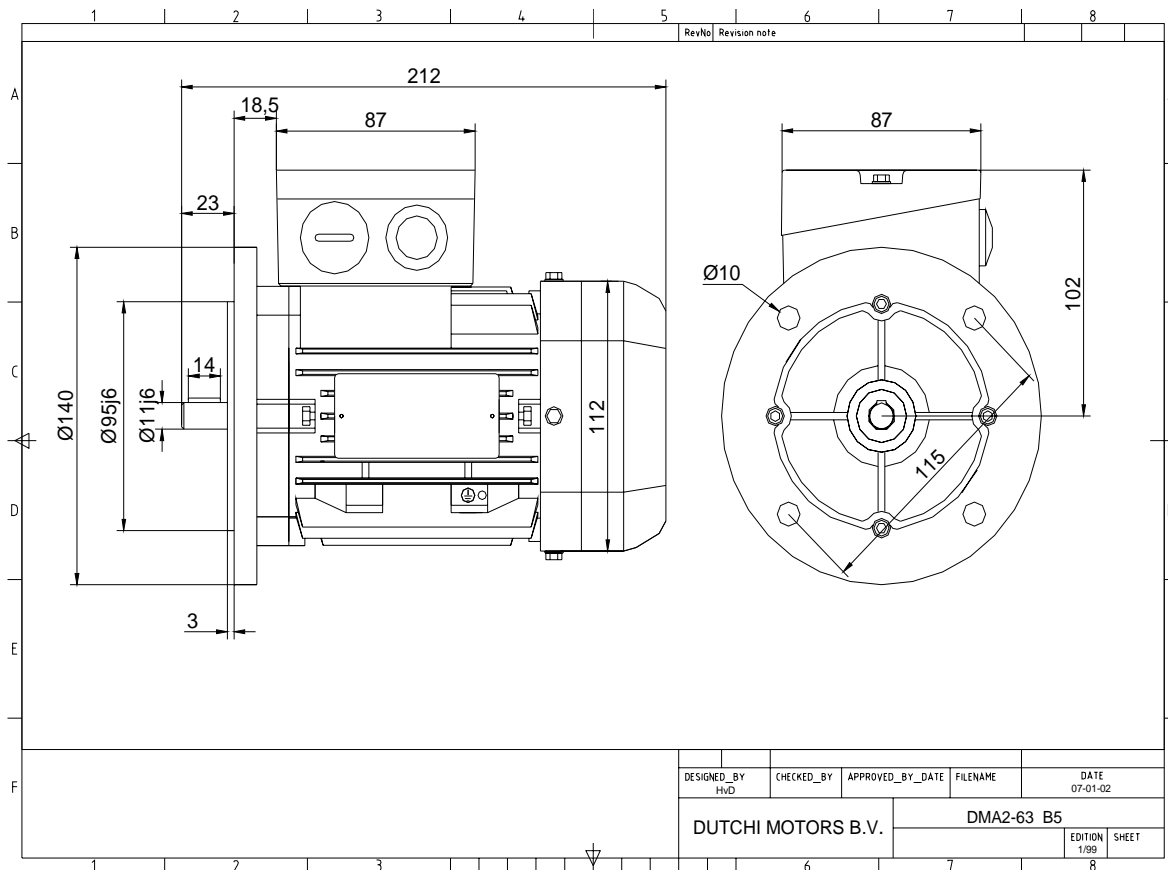


Specification	IEC 60034-1
Manufacturer	Dutchi Motors B.V.
Motor type	DMA2- 63 K2
Rated power	0,18 kW S1 duty
Speed	2610 r.p.m
Voltage	230 / 400 V
Frequency	50 Hz
Connection	Δ / Y
Amps full load	0,99 / 0,57 A
Amps no-load(400V)	0,41 A
Enclosure	IP 55
Insulation Class	F (temp. rise B (80 K))
Max. coolant temp.	40°C
Max. altitude	1.000 mtr, above sea level
Comment	
Cable entries	2 x M20*1,5
Feature	Aluminium motor
Weight	3,9 kg
Catalog no.	18122018D
Warranty	12~18 months

Efficiency class	N/A			
Load data	100%	75%	50%	25%
Efficiency	59,3	61,3	57,3	40,2 %
Power factor	0,77	0,65	0,52	0,34
Sound pressure level (1m)	51,6 dB(A)			
Resistance R20 (open)	48,69 Ω			
Resistance R20	Y 97,39 Ω			
Full load torque	0,66 Nm			
DOL Starting torque vs FL torque	2,01			
DOL Pull up torque vs FL torque	1,44			
DOL Pull out torque vs FL torque	2,88			
Star-Delta Starting torque vs FL torque	Y - motor			
Star-Delta Pull up torque vs FL torque	Y - motor			
Star-Delta Pull out torque vs FL torque	Y - motor			
DOL Starting current vs FL current	3,20			
Star Delta Starting current vs FL current	Y - motor			
Rotor Inertia	0,000100 kgm ²			
Bearing DE	6201 - ZZ			
Bearing NDE	6201 - ZZ			

WI	Change	date	sign.
Dutchi Motors B.V. P.O. Box 5390 NL-6802 EJ ARNHEM Tel : +31-(0)26 - 3541 600 Fax : +31-(0)26 - 3541 650		Discription Drawing made by :	date sign. HvD
dutchi.motors@dutchi.nl www.dutchi.com		19-04-04	

Power is our commodity, the world is our market !



Specification **IEC 60034-1**
 Manufacturer **Dutchi Motors B.V.**
 Motor type **DMA2- 63 K2**
 Rated power **0,18** kW **S1** duty
 Speed **2610** r.p.m
 Voltage **230 / 400** V
 Frequency **50** Hz
 Connection **Δ / Y**
 Amps full load **0,99 / 0,57** A
 Amps no-load(400V) **0,41** A
 Enclosure **IP 55**
 Insulation Class **F (temp. rise B (80 K))**

Max. coolant temp. **40°C**
 Max. altitude **1.000** mtr, above sea level
 Comment
 Cable entries **2 x M20*1,5**

Feature **Alumimium motor**
 Weight **3,9** kg
 Catalog no. **18222018D**
 Warranty **12~18 months**

Efficiency class **N/A**
 Load data 100% 75% 50% 25%
 Efficiency **59,3 61,3 57,3 40,2** %
 Power factor **0,77 0,65 0,52 0,34**

Sound pressure level (1m) **51,6** dB(A)
 Resistance R20 (open) **48,69** Ω
 Resistance R20 **Y 97,39** Ω

Full load torque **0,66** Nm
 DOL Starting torque vs FL torque **2,01**
 DOL Pull up torque vs FL torque **1,44**
 DOL Pull out torque vs FL torque **2,88**
 Star-Delta Starting torque vs FL torque **Y - motor**
 Star-Delta Pull up torque vs FL torque **Y - motor**
 Star-Delta Pull out torque vs FL torque **Y - motor**
 DOL Starting current vs FL current **3,20**
 Star Delta Starting current vs FL current **Y - motor**
 Rotor Inertia **0,000100** kgm2

Bearing DE **6201 - ZZ**
 Bearing NDE **6201 - ZZ**

WI	Change	date	sign.
Dutchi Motors B.V. P.O. Box 5390 NL-6802 EJ ARNHEM Tel : +31-(0)26 - 3541 600 Fax : +31-(0)26 - 3541 650		Discription Drawing made by :	date 19-04-04 sign. HvD
		dutchi.motors@dutchi.nl www.dutchi.com	