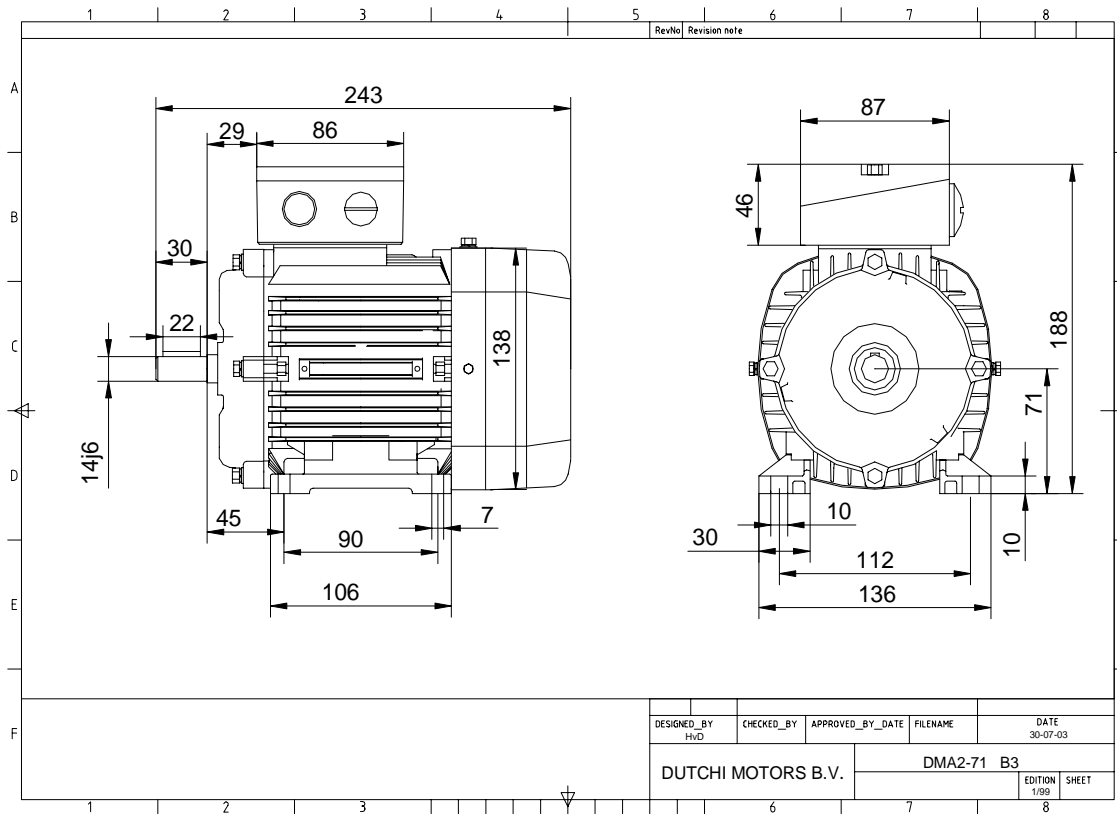


Power is our commodity, the world is our market !



Specification **IEC 60034-1**  
 Manufacturer **Dutchi Motors B.V.**  
 Motor type **DMA2- 71 G2**  
 Rated power **0,55** kW **S1** duty  
 Speed **2790** r.p.m  
 Voltage **230** / **400** V  
 Frequency **50** Hz  
 Connection **Δ** / **Y**  
 Amps full load **2,20** / **1,27** A  
 Amps no-load(400V) **0,80** A  
 Enclosure **IP 55**  
 Insulation Class **F (temp. rise B (80 K))**

Max. coolant temp. **40°C**  
 Max. altitude **1.000** mtr, above sea level  
 Comment  
 Cable entries **2 x M25x1,5 + 1 x M20x1,5 (ptc)**

Feature **Aluminium motor**  
 Weight **6,3** kg  
 Catalog no. **18122055D**  
 Warranty **12~18 months**

Efficiency class **N/A**  
 Load data 100% 75% 50% 25%  
 Efficiency **76,1 75,1 65,5 57,2** %  
 Power factor **0,82 0,74 0,61 0,42**

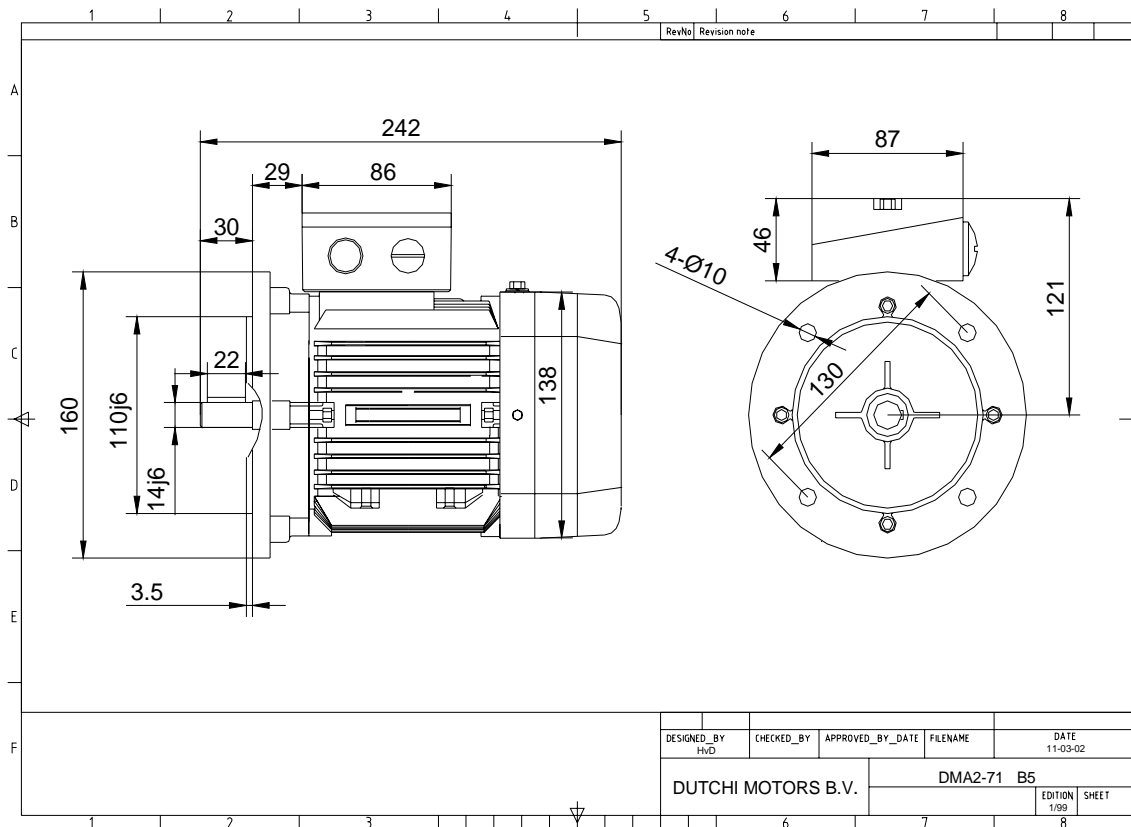
Sound pressure level (1m) **58,6** dB(A)  
 Resistance R20 (open) **11,76** Ω  
 Resistance R20 **Y 23,53** Ω

Full load torque **1,88** Nm  
 DOL Starting torque vs FL torque **3,73**  
 DOL Pull up torque vs FL torque **2,16**  
 DOL Pull out torque vs FL torque **3,78**  
 Star-Delta Starting torque vs FL torque **Y - motor**  
 Star-Delta Pull up torque vs FL torque **Y - motor**  
 Star-Delta Pull out torque vs FL torque **Y - motor**  
 DOL Starting current vs FL current **6,96**  
 Star Delta Starting current vs FL current **Y - motor**  
 Rotor Inertia **0,000400** kgm<sup>2</sup>

Bearing DE **6202 - ZZ**  
 Bearing NDE **6202 - ZZ**


WI	Change	date	sign.
<b>Dutchi Motors B.V.</b> P.O. Box 5390 NL-6802 EJ ARNHEM Tel : +31-(0)26 - 3541 600 Fax : +31-(0)26 - 3541 650		Discription	date
		Drawing made by :	19-04-04
		<b>dutchi.motors@dutchi.nl</b> <b>www.dutchi.com</b>	

Power is our commodity, the world is our market !



Specification **IEC 60034-1**  
 Manufacturer **Dutchi Motors B.V.**  
 Motor type **DMA2- 71 G2**  
 Rated power **0,55** kW **S1** duty  
 Speed **2790** r.p.m  
 Voltage **230** / **400** V  
 Frequency **50** Hz  
 Connection **Δ** / **Y**  
 Amps full load **2,20** / **1,27** A  
 Amps no-load(400V) **0,80** A  
 Enclosure **IP 55**  
 Insulation Class **F (temp. rise B (80 K))**

Max. coolant temp. **40°C**  
 Max. altitude **1.000** mtr, above sea level  
 Comment  
 Cable entries **2 x M25x1,5 + 1 x M20x1,5 (ptc)**

Feature **Alumimium motor**  
 Weight **6,3** kg  
 Catalog no. **18222055D**  
 Warranty **12~18 months**

Efficiency class **N/A**  
 Load data 100% 75% 50% 25%  
 Efficiency **76,1 75,1 65,5 57,2** %  
 Power factor **0,82 0,74 0,61 0,42**

Sound pressure level (1m) **58,6** dB(A)  
 Resistance R20 (open) **11,76** Ω  
 Resistance R20 **Y 23,53** Ω

Full load torque **1,88** Nm  
 DOL Starting torque vs FL torque **3,73**  
 DOL Pull up torque vs FL torque **2,16**  
 DOL Pull out torque vs FL torque **3,78**  
 Star-Delta Starting torque vs FL torque **Y - motor**  
 Star-Delta Pull up torque vs FL torque **Y - motor**  
 Star-Delta Pull out torque vs FL torque **Y - motor**  
 DOL Starting current vs FL current **6,96**  
 Star Delta Starting current vs FL current **Y - motor**  
 Rotor Inertia **0,000400** kgm2

Bearing DE **6202 - ZZ**  
 Bearing NDE **6202 - ZZ**


WI	Change	date	sign.
<b>Dutchi Motors B.V.</b> P.O. Box 5390 NL-6802 EJ ARNHEM Tel : +31-(0)26 - 3541 600 Fax : +31-(0)26 - 3541 650		Discription Drawing made by :	date sign. HVD
		<b>dutchi.motors@dutchi.nl</b> <b>www.dutchi.com</b>	