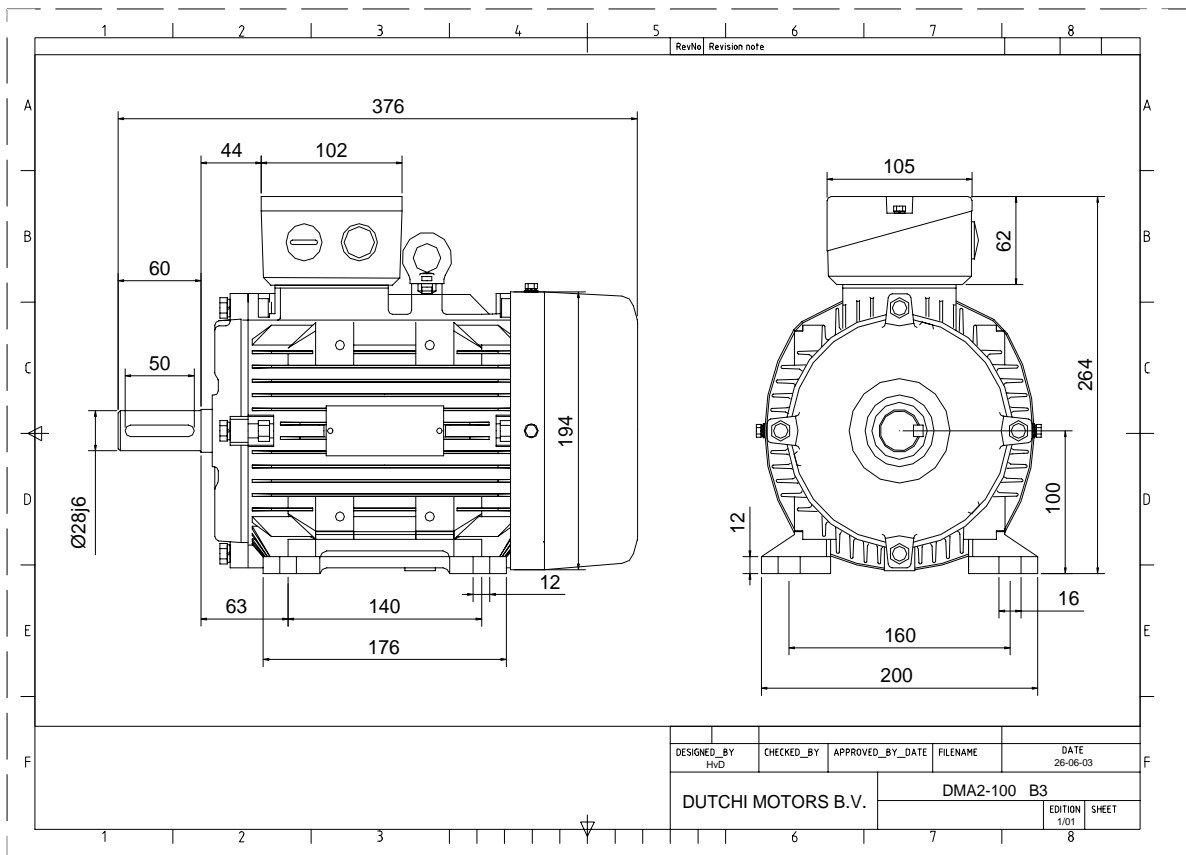


Power is our commodity, the world is our market !



Specification **IEC 60034-1**
 Manufacturer **Dutchi Motors B.V.**
 Motor type **DMA2- 100 L8**
 Rated power **0,75** kW **S1** duty
 Speed **685** r.p.m
 Voltage **230** / **400** V
 Frequency **50** Hz
 Connection **Δ** / **Y**
 Amps full load **4,53** / **2,62** A
 Amps no-load(400V) **2,38** A
 Enclosure **IP 55**
 Insulation Class **F (temp. rise B (80 K))**

Max. coolant temp. **40°C**
 Max. altitude **1.000** mtr, above sea level
 Comment
 Cable entries **2 x M25*1,5**

Feature **Alumimium motor**
 Weight **19,0** kg
 Catalog no. **18128075D**
 Warranty **12~18 months**

Efficiency class **N/A**
 Load data 100% 75% 50% 25%
 Efficiency **67,1 63,7 56,3 40,3** %
 Power factor **0,62 0,51 0,40 0,28**

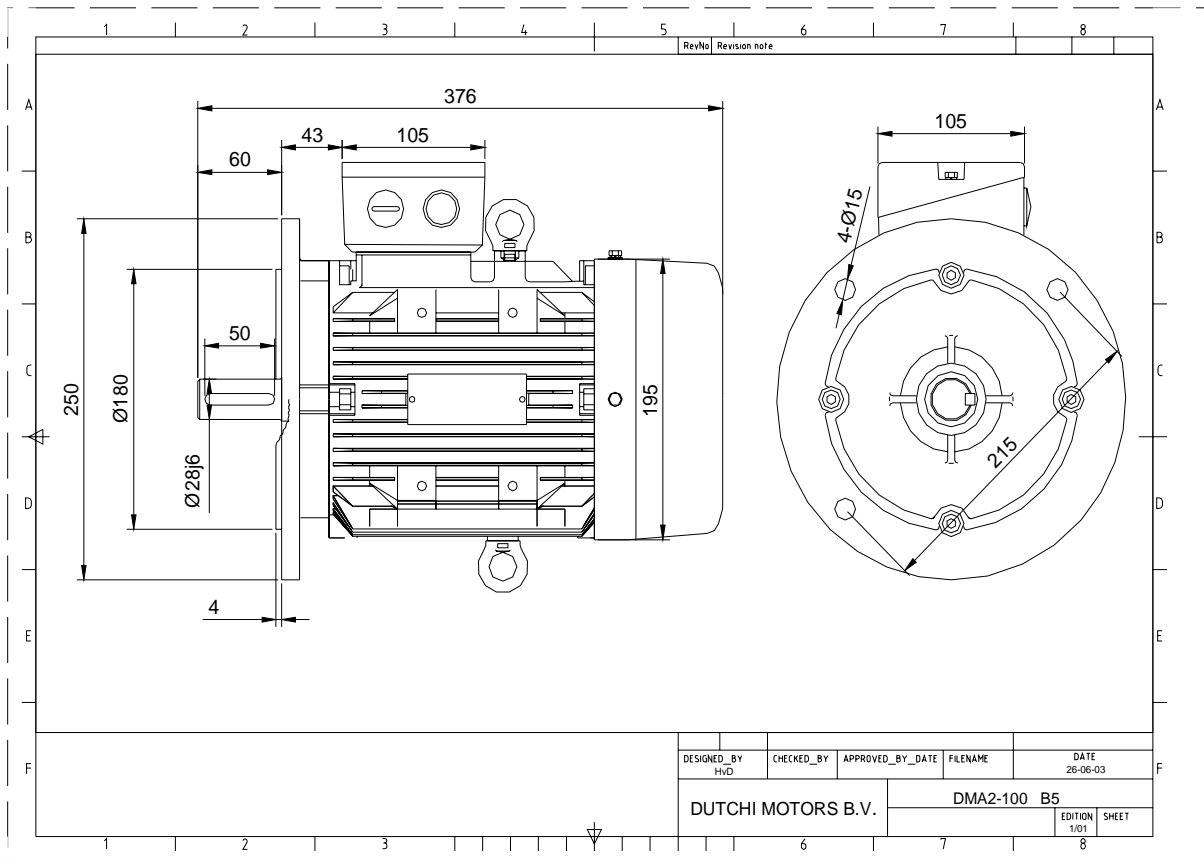
Sound pressure level (1m) **45,0** dB(A)
 Resistance R20 (open) **8,93** Ω
 Resistance R20 **Y 17,87** Ω

Full load torque **10,46** Nm
 DOL Starting torque vs FL torque **2,34**
 DOL Pull up torque vs FL torque **1,47**
 DOL Pull out torque vs FL torque **2,93**
 Star-Delta Starting torque vs FL torque **Y - motor**
 Star-Delta Pull up torque vs FL torque **Y - motor**
 Star-Delta Pull out torque vs FL torque **Y - motor**
 DOL Starting current vs FL current **3,68**
 Star Delta Starting current vs FL current **Y - motor**
 Rotor Inertia **0,0043** kgm2

Bearing DE **6206 - ZZ C3**
 Bearing NDE **6206 - ZZ C3**

WI	Change	date	sign.
Dutchi Motors B.V. P.O. Box 5390 NL-6802 EJ ARNHEM Tel : +31-(0)26 - 3541 600 Fax : +31-(0)26 - 3541 650		Discription	date
		Drawing made by :	19-04-04
		dutchi.motors@dutchi.nl www.dutchi.com	

Power is our commodity, the world is our market !



Specification	IEC 60034-1
Manufacturer	Dutchi Motors B.V.
Motor type	DMA2- 100 L8
Rated power	0,75 kW S1 duty
Speed	685 r.p.m
Voltage	230 / 400 V
Frequency	50 Hz
Connection	Δ / Y
Amps full load	4,53 / 2,62 A
Amps no-load(400V)	2,38 A
Enclosure	IP 55
Insulation Class	F (temp. rise B (80 K))
Max. coolant temp.	40°C
Max. altitude	1.000 mtr, above sea level
Comment	
Cable entries	2 x M25*1,5
Feature	Alumimium motor
Weight	19,0 kg
Catalog no.	18228075D
Warranty	12-18 months

Efficiency class	N/A			
Load data	100%	75%	50%	25%
Efficiency	67,1	63,7	56,3	40,3 %
Power factor	0,62	0,51	0,40	0,28
Sound pressure level (1m)				45,0 dB(A)
Resistance R20 (open)				8,93 Ω
Resistance R20	Y			17,87 Ω
Full load torque				10,46 Nm
DOL Starting torque vs FL torque				2,34
DOL Pull up torque vs FL torque				1,47
DOL Pull out torque vs FL torque				2,93
Star-Delta Starting torque vs FL torque				Y - motor
Star-Delta Pull up torque vs FL torque				Y - motor
Star-Delta Pull out torque vs FL torque				Y - motor
DOL Starting current vs FL current				3,68
Star Delta Starting current vs FL current				Y - motor
Rotor Inertia				0,0043 kgm2
Bearing DE				6206 - ZZ C3
Bearing NDE				6206 - ZZ C3

WI	Change	date	sign.
Dutchi Motors B.V. P.O. Box 5390 NL-6802 EJ ARNHEM Tel : +31-(0)26 - 3541 600 Fax : +31-(0)26 - 3541 650		Discription	date
		Drawing made by :	19-04-04
		dutchi.motors@dutchi.nl www.dutchi.com	