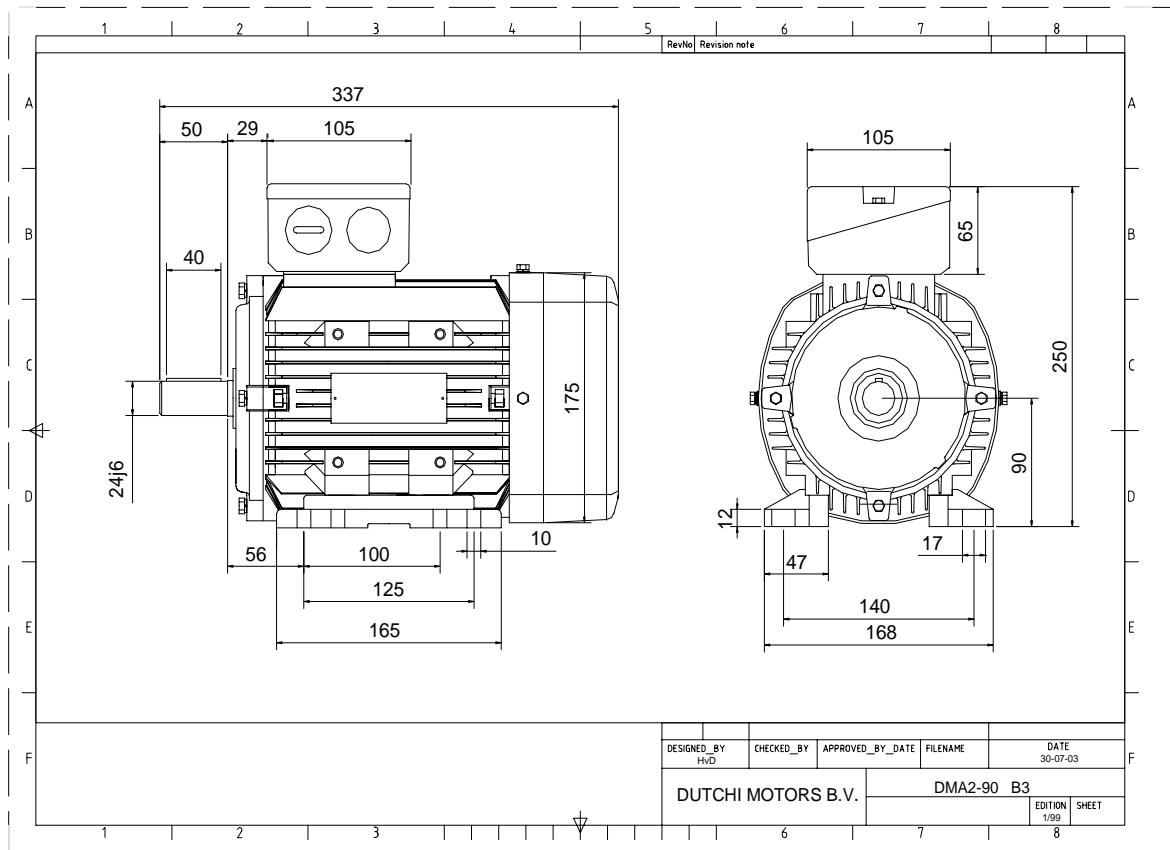




Power is our commodity, the world is our market !



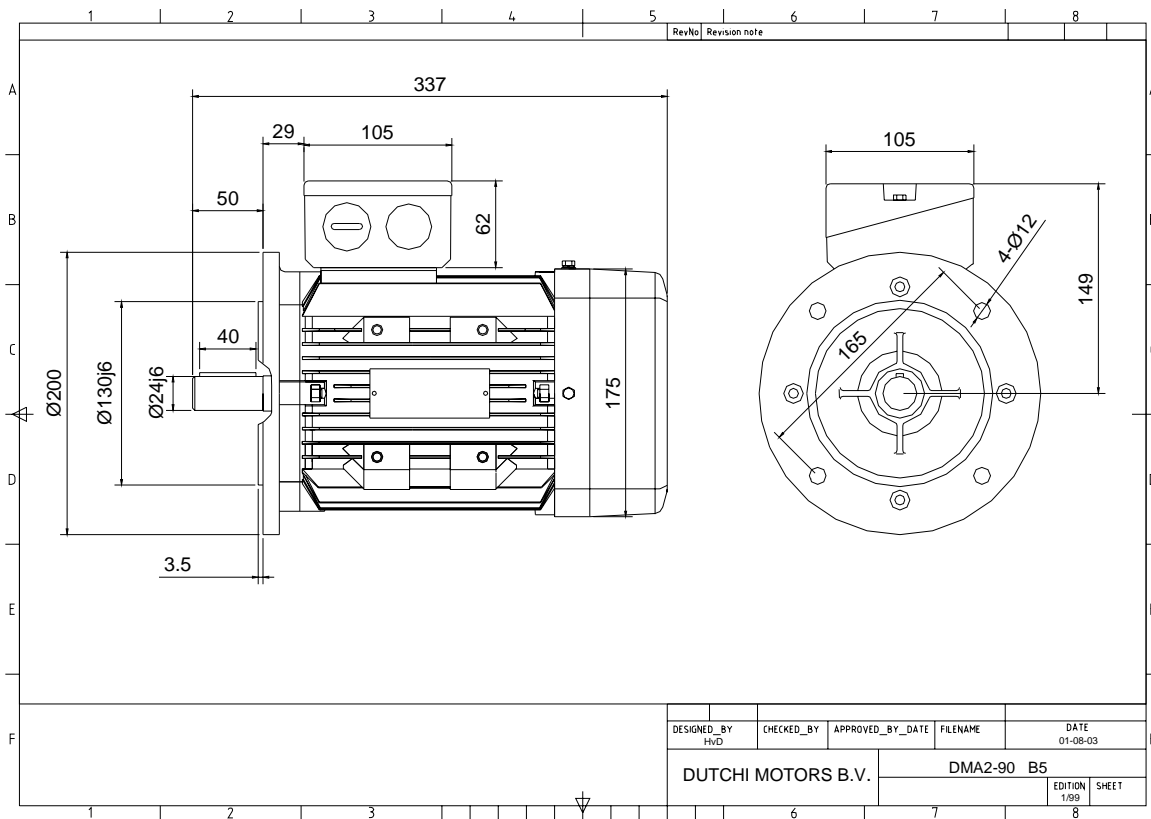
Specification	IEC 60034-1
Manufacturer	Dutchi Motors B.V.
Motor type	DMA2- 90 L6
Rated power	1,10 kW S1 duty
Speed	910 r.p.m
Voltage	230 / 400 V
Frequency	50 Hz
Connection	Δ / Y
Amps full load	5,55 / 3,20 A
Amps no-load(400V)	2,35 A
Enclosure	IP 55
Insulation Class	F (temp. rise B (80 K))
Max. coolant temp.	40°C
Max. altitude	1.000 mtr, above sea level
Comment	
Cable entries	2 x M25x1,5 + 1 x M20x1,5 (ptc)
Feature	Aluminium motor
Weight	14,0 kg
Catalog no.	18126110D
Warranty	12~18 months

Efficiency class	N/A			
Load data	100%	75%	50%	25%
Efficiency	70,9	70,8	66,8	52,4 %
Power factor	0,70	0,61	0,48	0,32
Sound pressure level (1m)				47,8 dB(A)
Resistance R20 (open)				5,95 Ω
Resistance R20	Y		11,91 Ω	
Full load torque				11,54 Nm
DOL Starting torque vs FL torque				2,42
DOL Pull up torque vs FL torque				1,45
DOL Pull out torque vs FL torque				2,74
Star-Delta Starting torque vs FL torque				Y - motor
Star-Delta Pull up torque vs FL torque				Y - motor
Star-Delta Pull out torque vs FL torque				Y - motor
DOL Starting current vs FL current				4,08
Star Delta Starting current vs FL current				Y - motor
Rotor Inertia				0,0038 kgm2
Bearing DE				6205 - ZZ
Bearing NDE				6205 - ZZ

Extras / Options :

WI	Change	date	sign.
Dutchi Motors B.V.		Description	date
P.O. Box 5390		Drawing made by :	19-04-04
NL-6802 EJ ARNHEM			
Tel : +31-(0)26 - 3541 600		dutchi.motors@dutchi.nl	
Fax : +31-(0)26 - 3541 650		www.dutchi.com	

Power is our commodity, the world is our market !



Specification	IEC 60034-1
Manufacturer	Dutchi Motors B.V.
Motor type	DMA2- 90 L6
Rated power	1,10 kW S1 duty
Speed	910 r.p.m
Voltage	230 / 400 V
Frequency	50 Hz
Connection	Δ / Y
Amps full load	5,55 / 3,20 A
Amps no-load(400V)	2,35 A
Enclosure	IP 55
Insulation Class	F (temp. rise B (80 K))
Max. coolant temp.	40°C
Max. altitude	1.000 mtr, above sea level
Comment	
Cable entries	2 x M25x1,5 + 1 x M20x1,5 (ptc)
Feature	Alumimium motor
Weight	14,0 kg
Catalog no.	18226110D
Warranty	12~18 months

Efficiency class	N/A			
Load data	100%	75%	50%	25%
Efficiency	70,9	70,8	66,8	52,4 %
Power factor	0,70	0,61	0,48	0,32
Sound pressure level (1m)				47,8 dB(A)
Resistance R20 (open)				5,95 Ω
Resistance R20	Y		11,91	Ω
Full load torque				11,54 Nm
DOL Starting torque vs FL torque				2,42
DOL Pull up torque vs FL torque				1,45
DOL Pull out torque vs FL torque				2,74
Star-Delta Starting torque vs FL torque				Y - motor
Star-Delta Pull up torque vs FL torque				Y - motor
Star-Delta Pull out torque vs FL torque				Y - motor
DOL Starting current vs FL current				4,08
Star Delta Starting current vs FL current				Y - motor
Rotor Inertia				0,0038 kgm ²
Bearing DE				6205 - ZZ
Bearing NDE				6205 - ZZ

Extras / Options :

WI	Change	date	sign.
Dutchi Motors B.V. P.O. Box 5390 NL-6802 EJ ARNHEM Tel : +31-(0)26 - 3541 600 Fax : +31-(0)26 - 3541 650		Description	date
		Drawing made by :	19-04-04
		dutchi.motors@dutchi.nl www.dutchi.com	