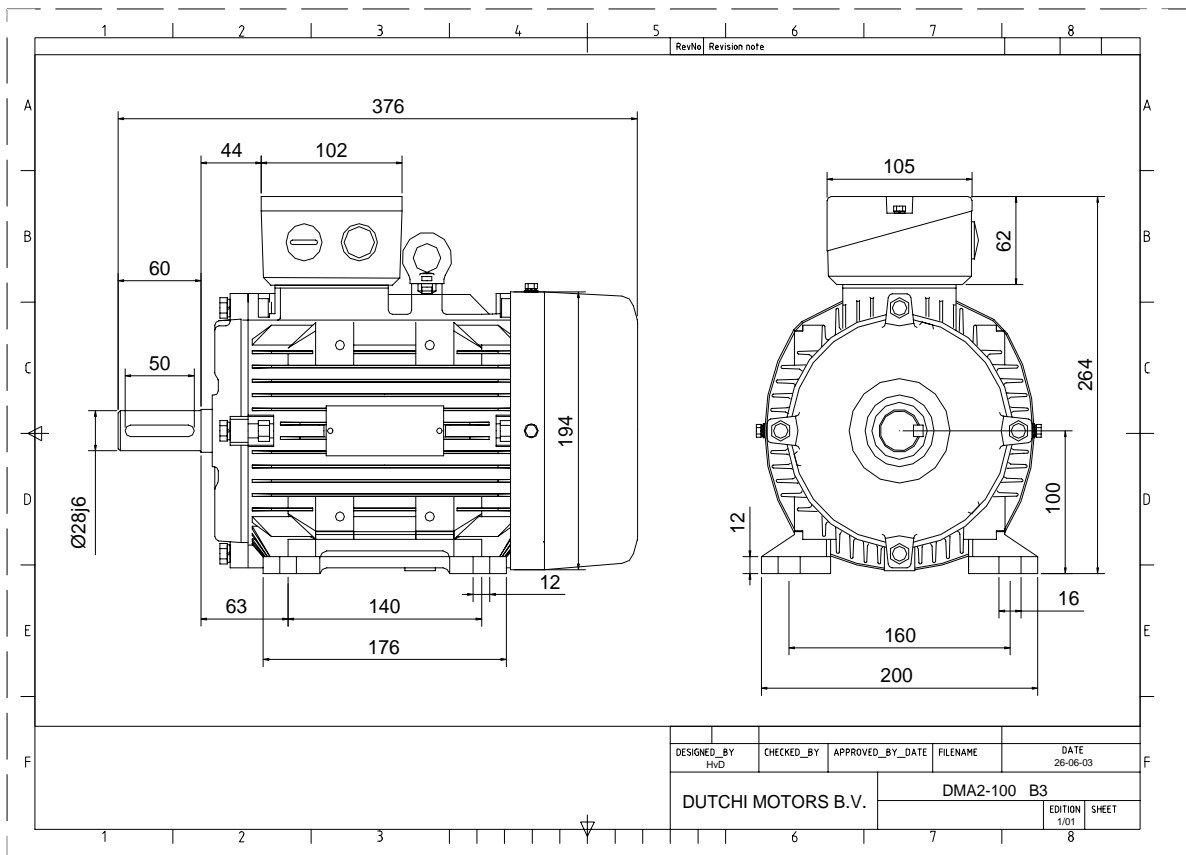


Power is our commodity, the world is our market !



Specification **IEC 60034-1**
 Manufacturer **Dutchi Motors B.V.**
 Motor type **DMA2- 100 L4**
 Rated power **2,20** kW **S1** duty
 Speed **1425** r.p.m
 Voltage **230** / **400** V
 Frequency **50** Hz
 Connection **Δ** / **Y**
 Amps full load **8,43** / **4,87** A
 Amps no-load(400V) **3,17** A
 Enclosure **IP 55**
 Insulation Class **F (temp. rise B (80 K))**

Max. coolant temp. **40°C**
 Max. altitude **1.000** mtr, above sea level
 Comment
 Cable entries **2 x M25*1,5**

Feature **Alumimium motor**
 Weight **19,5** kg
 Catalog no. **18124220D**
 Warranty **12~18 months**

Efficiency class **EFF 2**

Load data	100%	75%	50%	25%	
Efficiency	81,0	81,2	78,4	68,0	%
Power factor	0,80	0,72	0,57	0,36	

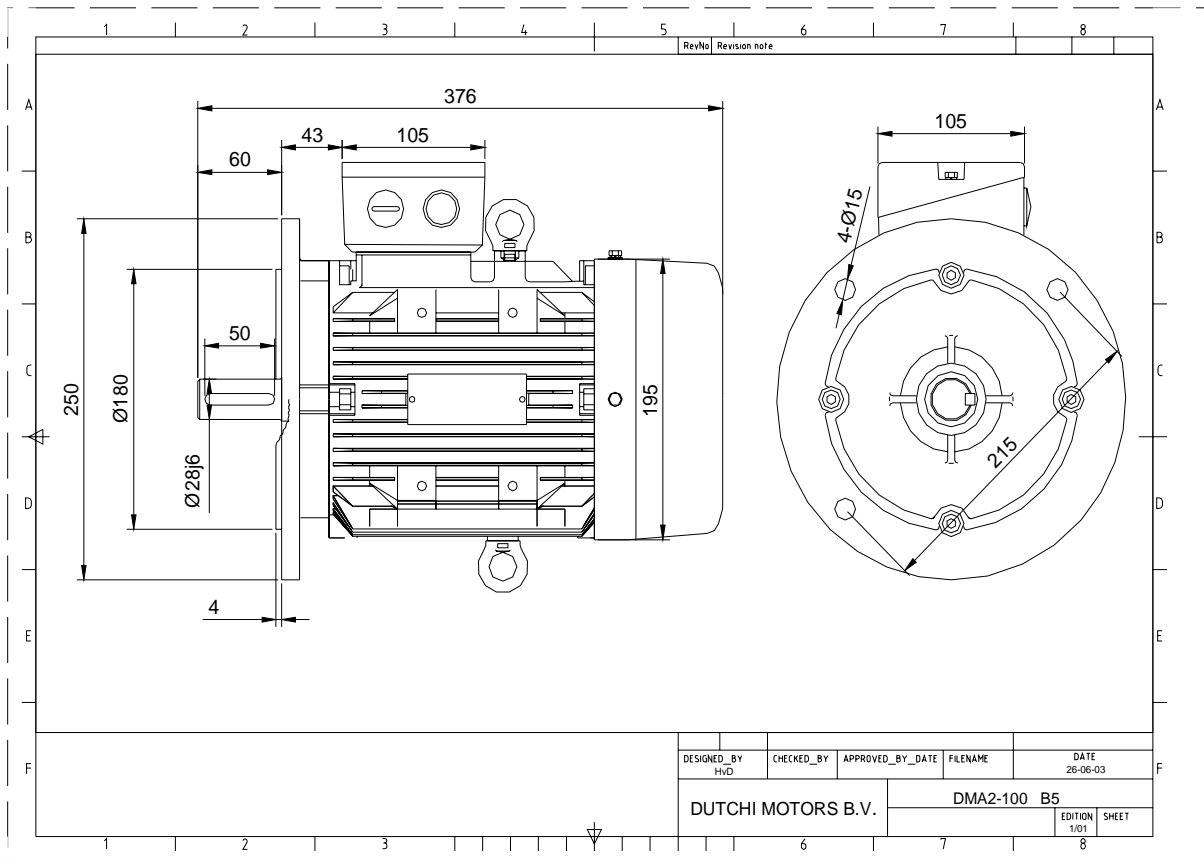
Sound pressure level (1m) **53,7** dB(A)
 Resistance R20 (open) **2,88** Ω
 Resistance R20 **Y** **5,75** Ω

Full load torque **14,74** Nm
 DOL Starting torque vs FL torque **2,12**
 DOL Pull up torque vs FL torque **1,55**
 DOL Pull out torque vs FL torque **3,04**
 Star-Delta Starting torque vs FL torque **0,66**
 Star-Delta Pull up torque vs FL torque **Y - motor**
 Star-Delta Pull out torque vs FL torque **Y - motor**
 DOL Starting current vs FL current **6,21**
 Star Delta Starting current vs FL current **Y - motor**
 Rotor Inertia **0,0046** kgm2

Bearing DE **6206 - ZZ C3**
 Bearing NDE **6206 - ZZ C3**

WI	Change	date	sign.
Dutchi Motors B.V. P.O. Box 5390 NL-6802 EJ ARNHEM Tel : +31-(0)26 - 3541 600 Fax : +31-(0)26 - 3541 650		Discription Drawing made by :	date 19-04-04
		sign. HvD	
		dutchi.motors@dutchi.nl www.dutchi.com	

Power is our commodity, the world is our market !



Specification **IEC 60034-1**
 Manufacturer **Dutchi Motors B.V.**
 Motor type **DMA2- 100 L4**
 Rated power **2,20** kW **S1** duty
 Speed **1425** r.p.m
 Voltage **230** / **400** V
 Frequency **50** Hz
 Connection **Δ** / **Y**
 Amps full load **8,43** / **4,87** A
 Amps no-load(400V) **3,17** A
 Enclosure **IP 55**
 Insulation Class **F (temp. rise B (80 K))**

Max. coolant temp. **40°C**
 Max. altitude **1.000** mtr, above sea level
 Comment
 Cable entries **2 x M25*1,5**

Feature **Alumimium motor**
 Weight **19,5** kg
 Catalog no. **18224220D**
 Warranty **12-18 months**

Efficiency class **EFF 2**

Load data	100%	75%	50%	25%	
Efficiency	81,0	81,2	78,4	68,0	%
Power factor	0,80	0,72	0,57	0,36	

Sound pressure level (1m) **53,7** dB(A)
 Resistance R20 (open) **2,88** Ω
 Resistance R20 **Y** **5,75** Ω

Full load torque **14,74** Nm
 DOL Starting torque vs FL torque **2,12**
 DOL Pull up torque vs FL torque **1,55**
 DOL Pull out torque vs FL torque **3,04**
 Star-Delta Starting torque vs FL torque **0,66**
 Star-Delta Pull up torque vs FL torque **Y - motor**
 Star-Delta Pull out torque vs FL torque **Y - motor**
 DOL Starting current vs FL current **6,21**
 Star Delta Starting current vs FL current **Y - motor**
 Rotor Inertia **0,0046** kgm2

Bearing DE **6206 - ZZ C3**
 Bearing NDE **6206 - ZZ C3**

WI	Change	date	sign.
Dutchi Motors B.V. P.O. Box 5390 NL-6802 EJ ARNHEM Tel : +31-(0)26 - 3541 600 Fax : +31-(0)26 - 3541 650		Discription	date
		Drawing made by :	19-04-04
		dutchi.motors@dutchi.nl www.dutchi.com	