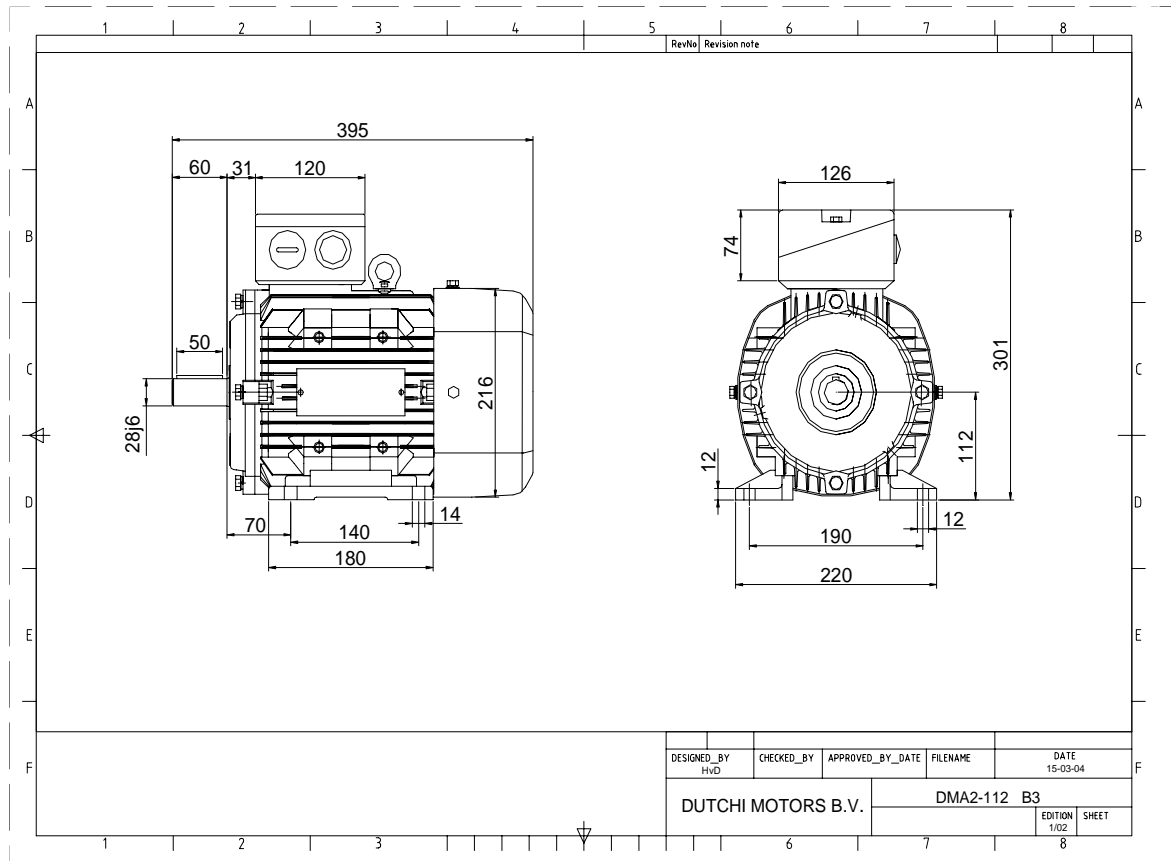


Power is our commodity, the world is our market !



Specification **IEC 60034-1**  
 Manufacturer **Dutchi Motors B.V.**  
 Motor type **DMA2- 112 M6**  
 Rated power **2,20** kW **S1** duty  
 Speed **935** r.p.m  
 Voltage **400** / **400** V  
 Frequency **50** Hz  
 Connection **Δ** / **Y**  
 Amps full load **5,22** / **3,01** A  
 Amps no-load(400V) **3,10** A  
 Enclosure **IP 55**  
 Insulation Class **F (temp. rise B (80 K))**

Max. coolant temp. **40°C**  
 Max. altitude **1.000** mtr, above sea level  
 Comment  
 Cable entries **2 x M32x1,5**

Feature **Aluminium motor**  
 Weight **28,0** kg  
 Catalog no. **18126220D**  
 Warranty **12~18 months**

Efficiency class **N/A**  
 Load data 100% 75% 50% 25%  
 Efficiency **78,7 79,4 77,5 67,4** %  
 Power factor **0,77 0,69 0,57 0,36**

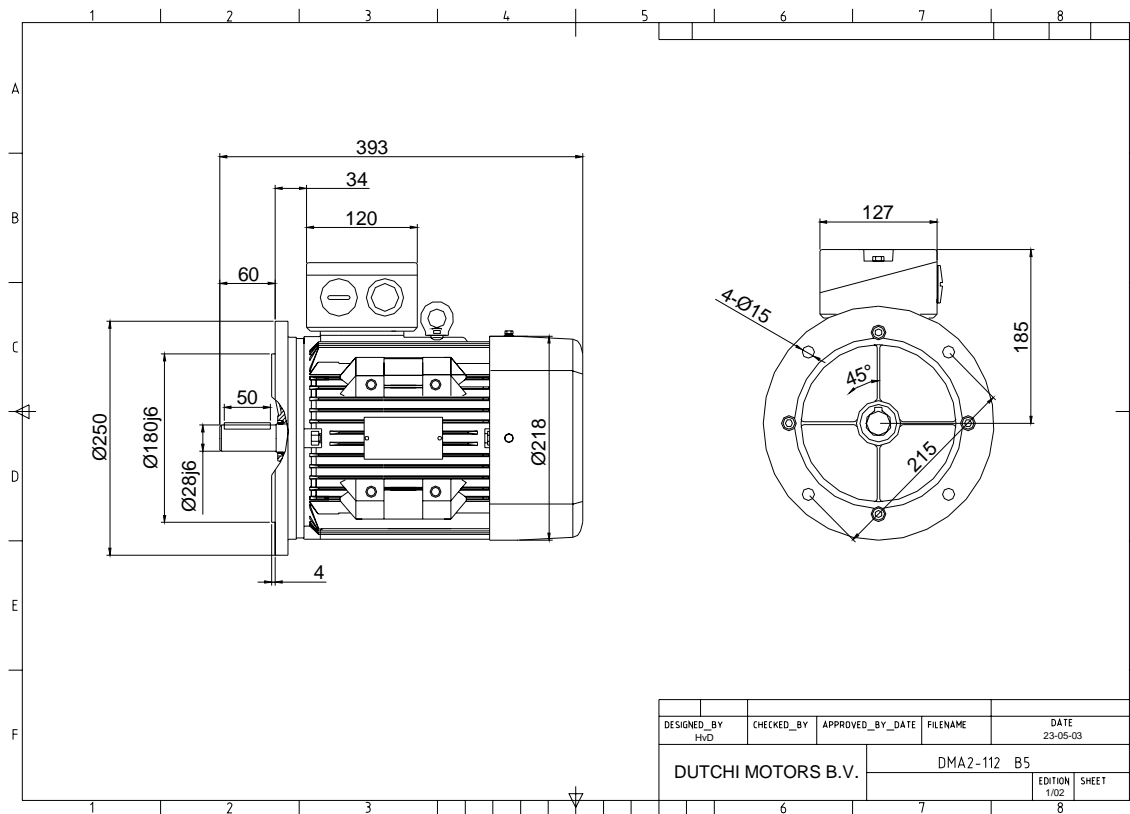
Sound pressure level (1m) **56,0** dB(A)  
 Resistance R20 (open) **2,89** Ω  
 Resistance R20 **Y 1,93** Ω

Full load torque **22,47** Nm  
 DOL Starting torque vs FL torque **1,93**  
 DOL Pull up torque vs FL torque **1,38**  
 DOL Pull out torque vs FL torque **2,61**  
 Star-Delta Starting torque vs FL torque **0,60**  
 Star-Delta Pull up torque vs FL torque **Y - motor**  
 Star-Delta Pull out torque vs FL torque **Y - motor**  
 DOL Starting current vs FL current **5,10**  
 Star Delta Starting current vs FL current **Y - motor**  
 Rotor Inertia **0,0069** kgm2

Bearing DE **6306 - ZZ C3**  
 Bearing NDE **6306 - ZZ C3**


WI	Change	date	sign.
<b>Dutchi Motors B.V.</b> P.O. Box 5390 NL-6802 EJ ARNHEM Tel : +31-(0)26 - 3541 600 Fax : +31-(0)26 - 3541 650		Description	date
		Drawing made by :	05-05-04
		dutchi.motors@dutchi.nl www.dutchi.com	

Power is our commodity, the world is our market !



Specification **IEC 60034-1**  
 Manufacturer **Dutchi Motors B.V.**  
 Motor type **DMA2- 112 M6**  
 Rated power **2,20** kW **S1** duty  
 Speed **935** r.p.m  
 Voltage **400** / **400** V  
 Frequency **50** Hz  
 Connection **Δ** / **Y**  
 Amps full load **5,22** / **3,01** A  
 Amps no-load(400V) **3,10** A  
 Enclosure **IP 55**  
 Insulation Class **F (temp. rise B (80 K))**

Max. coolant temp. **40°C**  
 Max. altitude **1.000** mtr, above sea level  
 Comment  
 Cable entries **2 x M32x1,5**

Feature **Alumimium motor**  
 Weight **28,0** kg  
 Catalog no. **18226220D**  
 Warranty **12~18 months**

Efficiency class **N/A**

Load data	100%	75%	50%	25%	
Efficiency	<b>78,7</b>	<b>79,4</b>	<b>77,5</b>	<b>67,4</b>	%
Power factor	<b>0,77</b>	<b>0,69</b>	<b>0,57</b>	<b>0,36</b>	

Sound pressure level (1m) **56,0** dB(A)  
 Resistance R20 (open) **2,89** Ω  
 Resistance R20 **Y** **1,93** Ω

Full load torque **22,47** Nm  
 DOL Starting torque vs FL torque **1,93**  
 DOL Pull up torque vs FL torque **1,38**  
 DOL Pull out torque vs FL torque **2,61**  
 Star-Delta Starting torque vs FL torque **0,60**  
 Star-Delta Pull up torque vs FL torque **Y - motor**  
 Star-Delta Pull out torque vs FL torque **Y - motor**  
 DOL Starting current vs FL current **5,10**  
 Star Delta Starting current vs FL current **Y - motor**  
 Rotor Inertia **0,0069** kgm2

Bearing DE **6306 - ZZ C3**  
 Bearing NDE **6306 - ZZ C3**


WI	Change	date	sign.
Dutchi Motors B.V.		Description	date
P.O. Box 5390		Drawing made by :	05-05-04
NL-6802 EJ ARNHEM			HvD
Tel : +31-(0)26 - 3541 600		<b>dutchi.motors@dutchi.nl</b>	
Fax : +31-(0)26 - 3541 650		<b>www.dutchi.com</b>	