

Specification **IEC 60034-1**  
 Manufacturer **Dutchi Motors B.V.**  
 Motor type **DMA2- 132 S8**  
 Rated power **2,20** kW **S1** duty  
 Speed **705** r.p.m  
 Voltage **400** / **690** V  
 Frequency **50** Hz  
 Connection **Δ** / **Y**  
 Amps full load **5,53** / **3,20** A  
 Amps no-load(400V) **3,69** A  
 Enclosure **IP 55**  
 Insulation Class **F (temp. rise B (80 K))**

Max. coolant temp. **40°C**  
 Max. altitude **1.000** mtr, above sea level  
 Comment  
 Cable entries **2 x M32x1,5**

Feature **Aluminium motor**  
 Weight **39,0** kg  
 Catalog no. **18128220D**  
 Warranty **12~18 months**

Efficiency class **N/A**  
 Load data 100% 75% 50% 25%  
 Efficiency **78,0 78,3 75,5 64,4** %  
 Power factor **0,74 0,65 0,51 0,32**

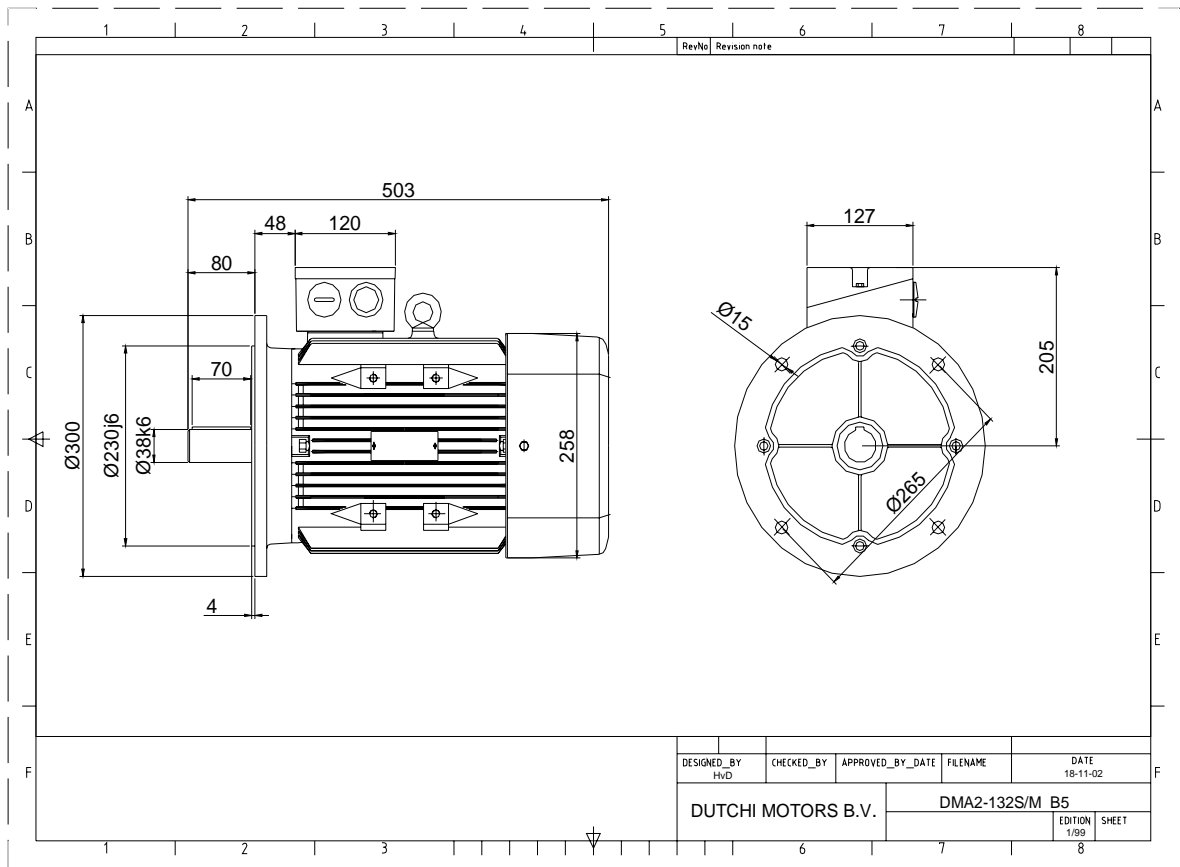
Sound pressure level (1m) **55,9** dB(A)  
 Resistance R20 (open) **8,943** Ω  
 Resistance R20 **Δ 5,962** Ω

Full load torque **29,8** Nm  
 DOL Starting torque vs FL torque **2,06**  
 DOL Pull up torque vs FL torque **1,45**  
 DOL Pull out torque vs FL torque **2,76**  
 Star-Delta Starting torque vs FL torque **0,64**  
 Star-Delta Pull up torque vs FL torque **0,45**  
 Star-Delta Pull out torque vs FL torque **0,86**  
 DOL Starting current vs FL current **5,03**  
 Star Delta Starting current vs FL current **1,57**  
 Rotor Inertia **0,0129** kgm<sup>2</sup>

Bearing DE **6308 - ZZ C3**  
 Bearing NDE **6308 - ZZ C3**


WI	Change	date	sign.
Dutchi Motors B.V.		Discription	sign.
P.O. Box 5390		Drawing made by :	HvD
NL-6802 EJ ARNHEM		19-04-04	
Tel : +31-(0)26 - 3541 600		dutchi.motors@dutchi.nl	
Fax : +31-(0)26 - 3541 650		www.dutchi.com	

Power is our commodity, the world is our market !



DESIGNED_BY HvD	CHECKED_BY	APPROVED_BY_DATE	FILENAME	DATE 18-11-02
DUTCHI MOTORS B.V.		DMA2-132S/M B5		EDITION 1/99
				SHEET

Specification	<b>IEC 60034-1</b>
Manufacturer	<b>Dutchi Motors B.V.</b>
Motor type	<b>DMA2- 132 S8</b>
Rated power	<b>2,20</b> kW <b>S1</b> duty
Speed	<b>705</b> r.p.m
Voltage	<b>400</b> / <b>690</b> V
Frequency	<b>50</b> Hz
Connection	<b>Δ</b> / <b>Y</b>
Amps full load	<b>5,53</b> / <b>3,20</b> A
Amps no-load(400V)	<b>3,69</b> A
Enclosure	<b>IP 55</b>
Insulation Class	<b>F (temp. rise B (80 K))</b>
Max. coolant temp.	<b>40°C</b>
Max. altitude	<b>1.000</b> mtr, above sea level
Comment	
Cable entries	<b>2 x M32x1,5</b>
Feature	<b>Alumimium motor</b>
Weight	<b>39,0</b> kg
Catalog no.	<b>18228220D</b>
Warranty	<b>12~18 months</b>

Efficiency class	<b>N/A</b>			
Load data	100%	75%	50%	25%
Efficiency	<b>78,0</b>	<b>78,3</b>	<b>75,5</b>	<b>64,4</b> %
Power factor	<b>0,74</b>	<b>0,65</b>	<b>0,51</b>	<b>0,32</b>
Sound pressure level (1m)	<b>55,9</b> dB(A)			
Resistance R20 (open)	<b>8,943</b> Ω			
Resistance R20	<b>Δ 5,962</b> Ω			
Full load torque	<b>29,8</b> Nm			
DOL Starting torque vs FL torque	<b>2,06</b>			
DOL Pull up torque vs FL torque	<b>1,45</b>			
DOL Pull out torque vs FL torque	<b>2,76</b>			
Star-Delta Starting torque vs FL torque	<b>0,64</b>			
Star-Delta Pull up torque vs FL torque	<b>0,45</b>			
Star-Delta Pull out torque vs FL torque	<b>0,86</b>			
DOL Starting current vs FL current	<b>5,03</b>			
Star Delta Starting current vs FL current	<b>1,57</b>			
Rotor Inertia	<b>0,0129</b> kgm2			
Bearing DE	<b>6308 - ZZ C3</b>			
Bearing NDE	<b>6308 - ZZ C3</b>			


WI	Change	date	sign.
<b>Dutchi Motors B.V.</b> P.O. Box 5390 NL-6802 EJ ARNHEM Tel : +31-(0)26 - 3541 600 Fax : +31-(0)26 - 3541 650		Discription Drawing made by :	date sign. HvD
dutchi.motors@dutchi.nl www.dutchi.com		19-04-04	