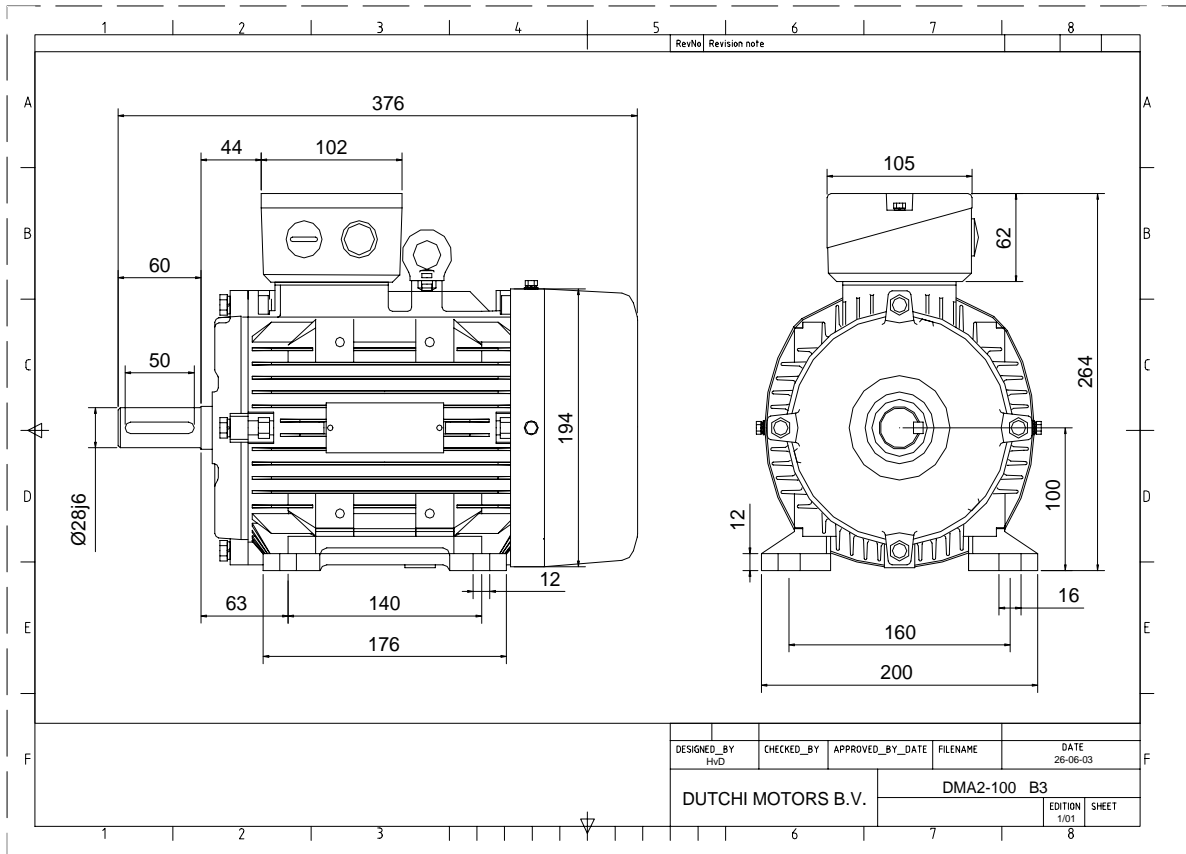


Power is our commodity, the world is our market !



Specification **IEC 60034-1**  
 Manufacturer **Dutchi Motors B.V.**  
 Motor type **DMA2- 100LX4**  
 Rated power **3,00** kW **S1** duty  
 Speed **1420** r.p.m  
 Voltage **400** / **690** V  
 Frequency **50** Hz  
 Connection **Δ** / **Y**  
 Amps full load **6,44** / **3,72** A  
 Amps no-load(400V) **4,19** A  
 Enclosure **IP 55**  
 Insulation Class **F (temp. rise B (80 K))**

Max. coolant temp. **40°C**  
 Max. altitude **1.000** mtr, above sea level  
 Comment  
 Cable entries **2 x M25\*1,5**

Feature **Alumimium motor**  
 Weight **23,0** kg  
 Catalog no. **18134300D**  
 Warranty **12~18 months**

Efficiency class **EFF 2**

Load data	100%	75%	50%	25%	
Efficiency	<b>82,8</b>	<b>83,0</b>	<b>80,6</b>	<b>70,4</b>	%
Power factor	<b>0,81</b>	<b>0,73</b>	<b>0,58</b>	<b>0,36</b>	

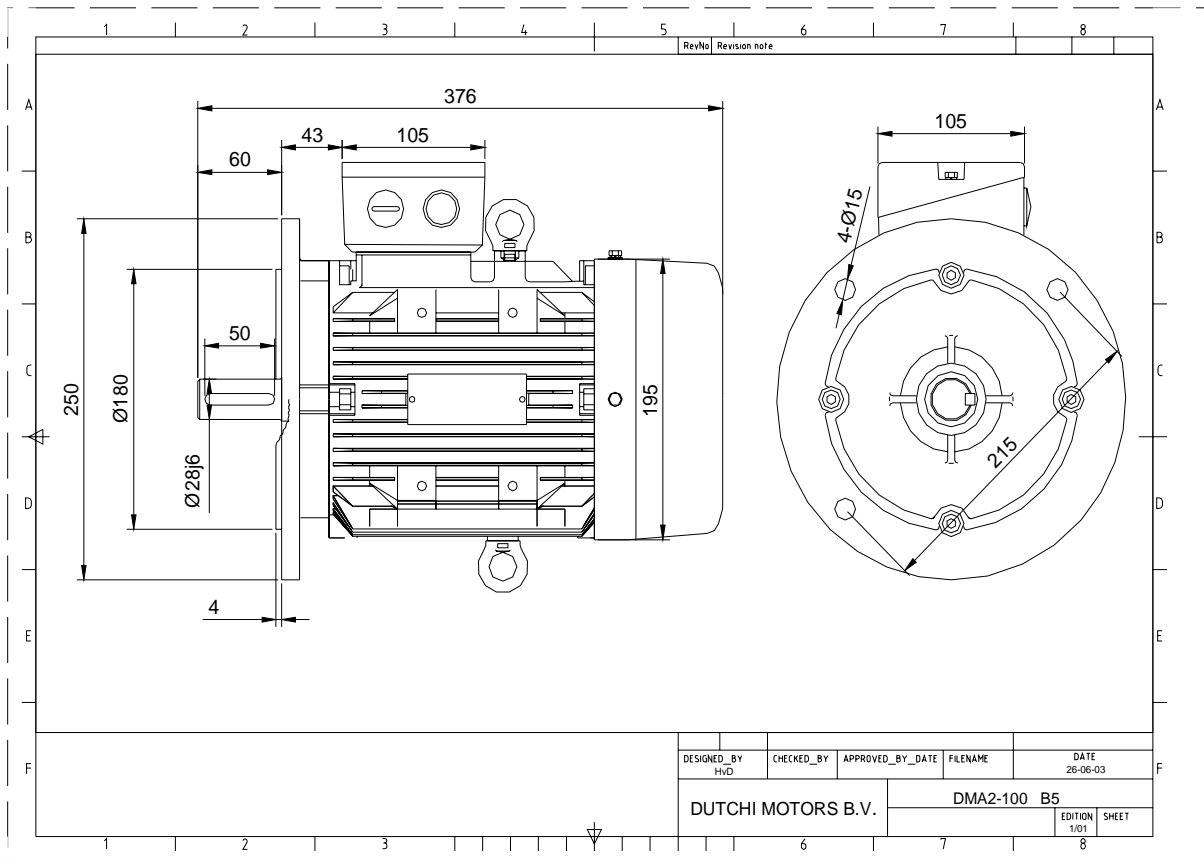
Sound pressure level (1m) **49,1** dB(A)  
 Resistance R20 (open) **5,11** Ω  
 Resistance R20 **Δ 3,40** Ω

Full load torque **20,18** Nm  
 DOL Starting torque vs FL torque **3,02**  
 DOL Pull up torque vs FL torque **2,10**  
 DOL Pull out torque vs FL torque **3,74**  
 Star-Delta Starting torque vs FL torque **0,94**  
 Star-Delta Pull up torque vs FL torque **0,66**  
 Star-Delta Pull out torque vs FL torque **1,17**  
 DOL Starting current vs FL current **7,26**  
 Star Delta Starting current vs FL current **2,27**  
 Rotor Inertia **0,0064** kgm<sup>2</sup>

Bearing DE **6206 - ZZ C3**  
 Bearing NDE **6206 - ZZ C3**


WI	Change	date	sign.
<b>Dutchi Motors B.V.</b> P.O. Box 5390 NL-6802 EJ ARNHEM Tel : +31-(0)26 - 3541 600 Fax : +31-(0)26 - 3541 650		Discription	date
		Drawing made by :	19-04-04
		<b>dutchi.motors@dutchi.nl</b> <b>www.dutchi.com</b>	

Power is our commodity, the world is our market !



Specification **IEC 60034-1**  
 Manufacturer **Dutchi Motors B.V.**  
 Motor type **DMA2- 100LX4**  
 Rated power **3,00** kW **S1** duty  
 Speed **1420** r.p.m  
 Voltage **400** / **690** V  
 Frequency **50** Hz  
 Connection **Δ** / **Y**  
 Amps full load **6,44** / **3,72** A  
 Amps no-load(400V) **4,19** A  
 Enclosure **IP 55**  
 Insulation Class **F (temp. rise B (80 K))**

Max. coolant temp. **40°C**  
 Max. altitude **1.000** mtr, above sea level  
 Comment  
 Cable entries **2 x M25\*1,5**

Feature **Alumimium motor**  
 Weight **23,0** kg  
 Catalog no. **18234300D**  
 Warranty **12-18 months**

Efficiency class **EFF 2**

Load data	100%	75%	50%	25%	
Efficiency	<b>82,8</b>	<b>83,0</b>	<b>80,6</b>	<b>70,4</b>	%
Power factor	<b>0,81</b>	<b>0,73</b>	<b>0,58</b>	<b>0,36</b>	

Sound pressure level (1m) **49,1** dB(A)  
 Resistance R20 (open) **5,11** Ω  
 Resistance R20 **Δ 3,40** Ω

Full load torque **20,18** Nm  
 DOL Starting torque vs FL torque **3,02**  
 DOL Pull up torque vs FL torque **2,10**  
 DOL Pull out torque vs FL torque **3,74**  
 Star-Delta Starting torque vs FL torque **0,94**  
 Star-Delta Pull up torque vs FL torque **0,66**  
 Star-Delta Pull out torque vs FL torque **1,17**  
 DOL Starting current vs FL current **7,26**  
 Star Delta Starting current vs FL current **2,27**  
 Rotor Inertia **0,0064** kgm2

Bearing DE **6206 - ZZ C3**  
 Bearing NDE **6206 - ZZ C3**


WI	Change	date	sign.
<b>Dutchi Motors B.V.</b> P.O. Box 5390 NL-6802 EJ ARNHEM Tel : +31-(0)26 - 3541 600 Fax : +31-(0)26 - 3541 650	Discription	date	sign.
	Drawing made by :	19-04-04	HvD
	<b>dutchi.motors@dutchi.nl</b> <b>www.dutchi.com</b>		