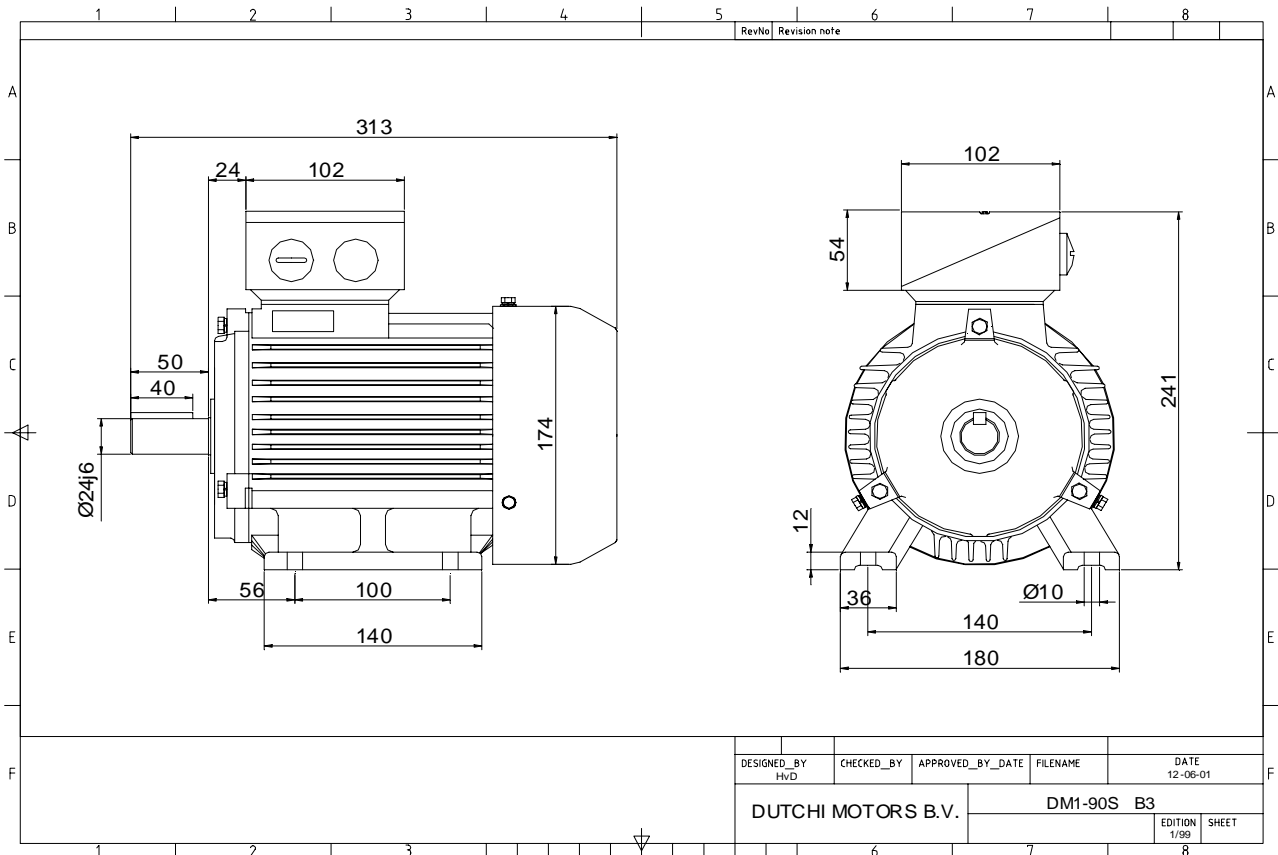


Power is our commodity, the world is our market !



Specification **IEC 60034-1**
 Manufacturer **Dutchi Motors B.V.**
 Motor type **DM1- 90 S8**
 Rated power **0,37** kW **S1** duty
 Speed **700** r.p.m
 Voltage **230 / 400** V
 Frequency **50** Hz
 Connection **Δ / Y**
 Amps full load **2,41 / 1,39** A
 Amps no-load(400V) **1,20** A
 Enclosure **IP 55**
 Insulation Class **F (temp. rise B (80 K))**

Max. coolant temp. **40°C**
 Max. altitude **1.000** mtr, above sea level
 Comment **3 x PTC 150°C**
 Cable entries **2 x M25x1,5 + 1 x M16x1,5 (ptc)**

Feature **Cast-iron motor**
 Weight **24,0** kg
 Catalog no. **11128037D**
 Warranty **12~18 months**

Efficiency class **N/A**
 Load data 100% 75% 50% 25%
 Efficiency **64,7 61,2 51,4 32,7** %
 Power factor **0,59 0,51 0,39 0,27**

Sound pressure level (1m) **46,3** dB(A)
 Resistance R20 (open) **15,76** Ω
 Resistance R20 **Y 31,53** Ω

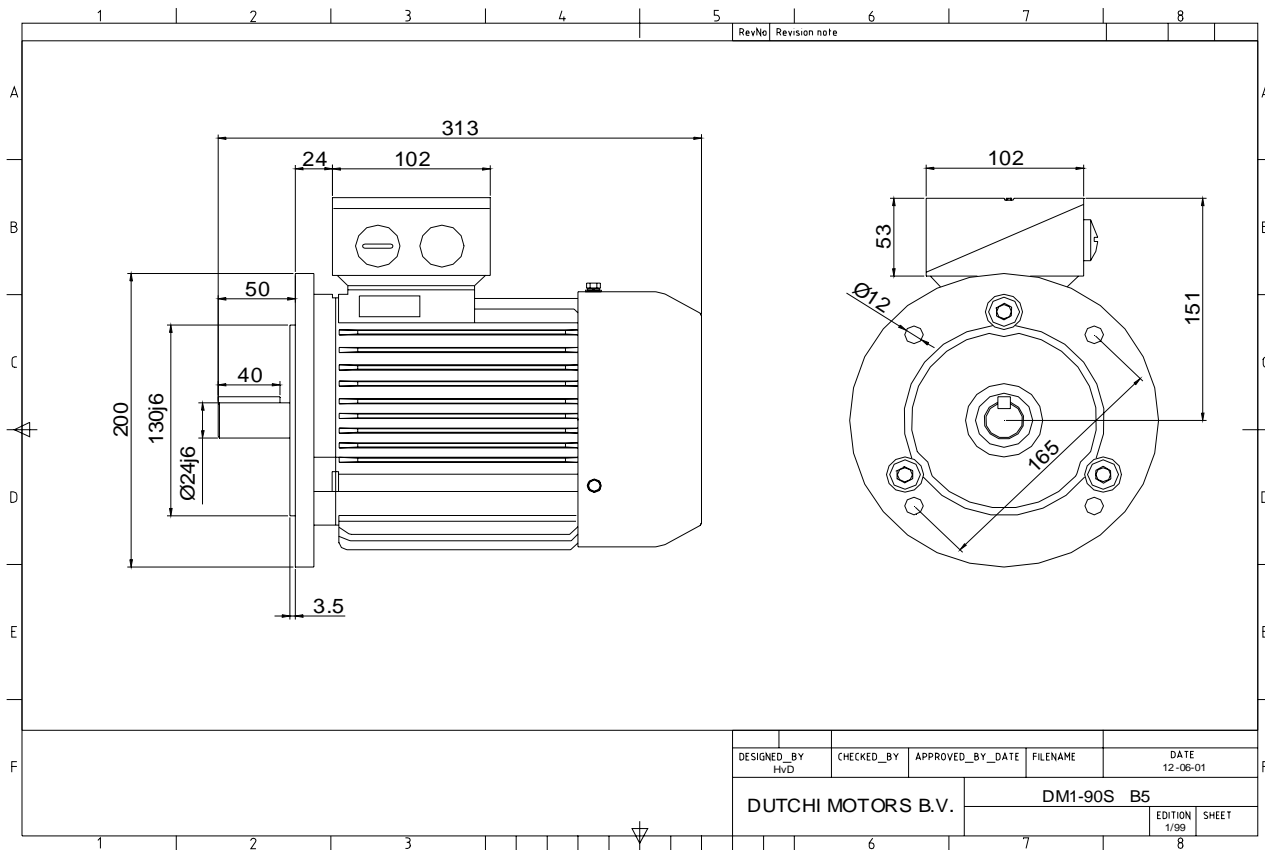
Full load torque **5,05** Nm
 DOL Starting torque vs FL torque **2,26**
 DOL Pull up torque vs FL torque **1,65**
 DOL Pull out torque vs FL torque **3,14**
 Star-Delta Starting torque vs FL torque **Y - motor**
 Star-Delta Pull up torque vs FL torque **Y - motor**
 Star-Delta Pull out torque vs FL torque **Y - motor**
 DOL Starting current vs FL current **3,50**
 Star Delta Starting current vs FL current **Y - motor**
 Rotor Inertia **0,0029** kgm2

Bearing DE **6205 - ZZ**
 Bearing NDE **6205 - ZZ**

| |
|--|
| |
| |
| |
| |
| |
| |
| |
| |

| | | | |
|---|--------|---|----------|
| WI | Change | date | sign. |
| | | | |
| Dutchi Motors B.V. P.O. Box 5390 NL-6802 EJ ARNHEM Tel : +31-(0)26 - 3541 600 Fax : +31-(0)26 - 3541 650 | | Description | date |
| | | Drawing made by : | 19-04-04 |
| | | dutchi.motors@dutchi.nl www.dutchi.com | |

Power is our commodity, the world is our market !



Specification **IEC 60034-1**
 Manufacturer **Dutchi Motors B.V.**
 Motor type **DM1- 90 S8**
 Rated power **0,37** kW **S1** duty
 Speed **700** r.p.m
 Voltage **230** / **400** V
 Frequency **50** Hz
 Connection **Δ** / **Y**
 Amps full load **2,41** / **1,39** A
 Amps no-load(400V) **1,20** A
 Enclosure **IP 55**
 Insulation Class **F (temp. rise B (80 K))**

Max. coolant temp. **40°C**
 Max. altitude **1.000** mtr, above sea level
 Comment **3 x PTC 150°C**
 Cable entries **2 x M25x1,5 + 1 x M16x1,5 (ptc)**

Feature **Cast-iron motor**
 Weight **24,0** kg
 Catalog no. **11228037D**
 Warranty **12~18 months**

Efficiency class **N/A**
 Load data 100% 75% 50% 25%
 Efficiency **64,7 61,2 51,4 32,7** %
 Power factor **0,59 0,51 0,39 0,27**

Sound pressure level (1m) **46,3** dB(A)
 Resistance R20 (open) **15,76** Ω
 Resistance R20 **Y 31,53** Ω

Full load torque **5,05** Nm
 DOL Starting torque vs FL torque **2,26**
 DOL Pull up torque vs FL torque **1,65**
 DOL Pull out torque vs FL torque **3,14**
 Star-Delta Starting torque vs FL torque **Y - motor**
 Star-Delta Pull up torque vs FL torque **Y - motor**
 Star-Delta Pull out torque vs FL torque **Y - motor**
 DOL Starting current vs FL current **3,50**
 Star Delta Starting current vs FL current **Y - motor**
 Rotor Inertia **0,0029** kgm2

Bearing DE **6205 - ZZ**
 Bearing NDE **6205 - ZZ**

| |
|--|
| |
| |
| |
| |
| |
| |
| |
| |

| | | | |
|---|--------|---|----------|
| WI | Change | date | sign. |
| | | | |
| Dutchi Motors B.V. P.O. Box 5390 NL-6802 EJ ARNHEM Tel : +31-(0)26 - 3541 600 Fax : +31-(0)26 - 3541 650 | | Description | date |
| | | Drawing made by : | 19-04-04 |
| | | dutchi.motors@dutchi.nl www.dutchi.com | |