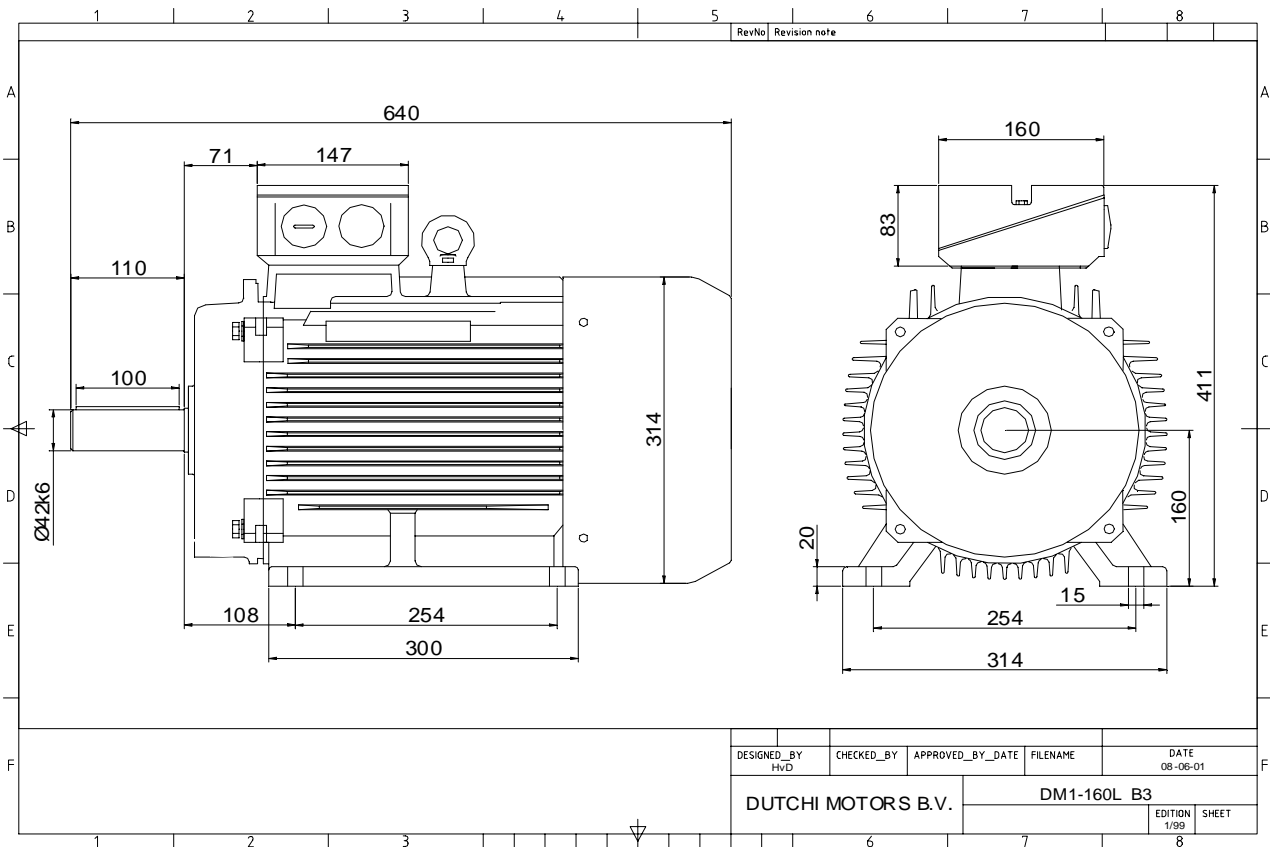


Power is our commodity, the world is our market !



Specification **IEC 60034-1**
 Manufacturer **Dutchi Motors B.V.**
 Motor type **DM1- 160 L6**
 Rated power **11** kW **S1** duty
 Speed **970** r.p.m
 Voltage **400 / 690** V
 Frequency **50** Hz
 Connection **Δ / Y**
 Amps full load **22,4 / 12,9** A
 Amps no-load(400V) **10,60** A
 Enclosure **IP 55**
 Insulation Class **F (temp. rise B (80 K))**

Max. coolant temp. **40°C**
 Max. altitude **1.000** mtr, above sea level
 Comment **3 x PTC 150°C**
 Cable entries **2 x M40x1,5 + 1 x M20x1,5 (ptc)**

Feature **Cast-iron motor**
 Weight **131** kg
 Catalog no. **11136A11D**
 Warranty **12~18 months**

Efficiency class **N/A**
 Load data 100% 75% 50% 25%
 Efficiency **87,2 87,5 85,8 78,2** %
 Power factor **0,81 0,76 0,65 0,44**

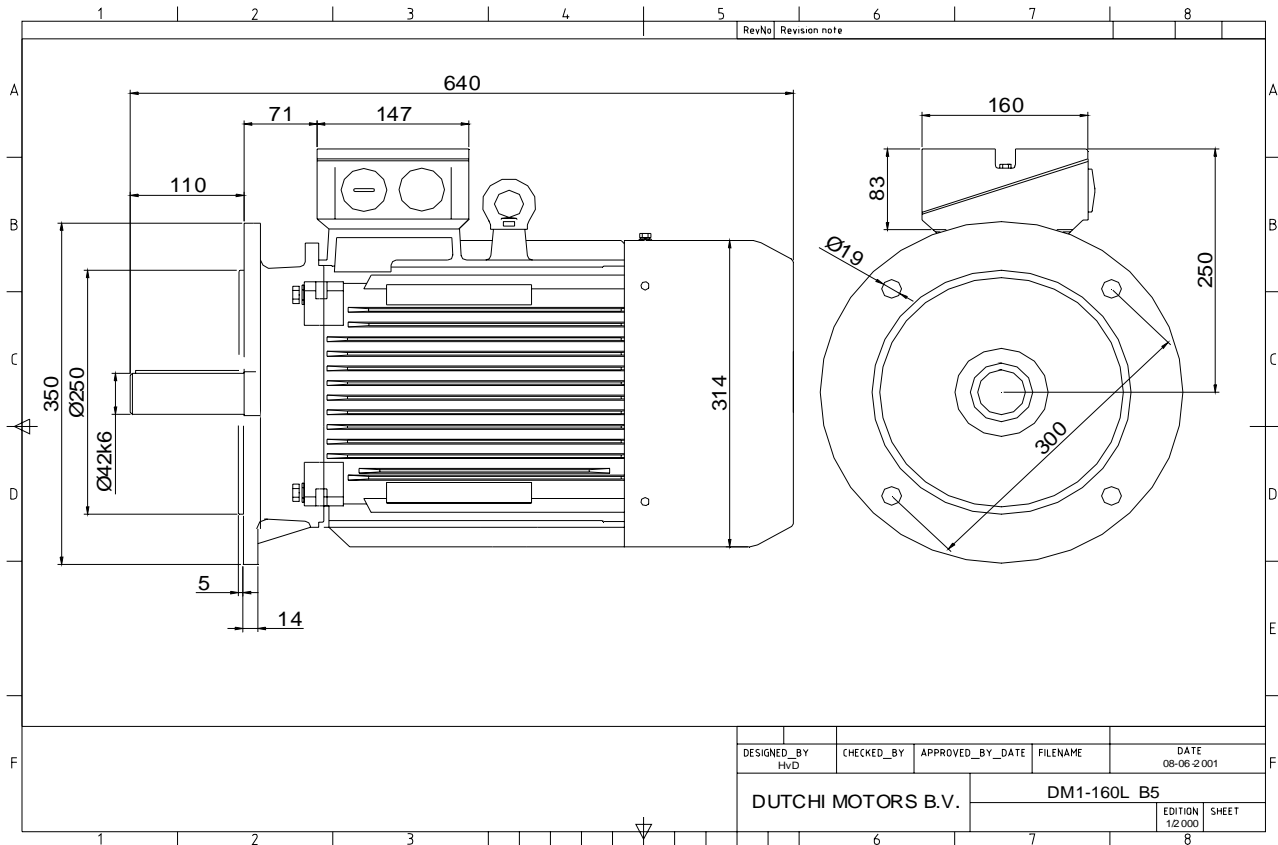
Sound pressure level (1m) **57,2** dB(A)
 Resistance R20 (open) **0,827** Ω
 Resistance R20 **Δ 0,551** Ω

Full load torque **108** Nm
 DOL Starting torque vs FL torque **1,88**
 DOL Pull up torque vs FL torque **1,45**
 DOL Pull out torque vs FL torque **3,06**
 Star-Delta Starting torque vs FL torque **0,59**
 Star-Delta Pull up torque vs FL torque **0,45**
 Star-Delta Pull out torque vs FL torque **0,96**
 DOL Starting current vs FL current **6,89**
 Star Delta Starting current vs FL current **2,15**
 Rotor Inertia **0,1080** kgm2

Bearing DE **6309 - ZZ C3**
 Bearing NDE **6309 - ZZ C3**

WI	Change	date	sign.
Dutchi Motors B.V. P.O. Box 5390 NL-6802 EJ ARNHEM Tel : +31-(0)26 - 3541 600 Fax : +31-(0)26 - 3541 650		Discription	date
		Drawing made by :	27-04-04
		dutchi.motors@dutchi.nl www.dutchi.com	

Power is our commodity, the world is our market !



DESIGNED_BY HvD	CHECKED_BY	APPROVED_BY_DATE	FILENAME	DATE 08-06-2001
DUTCHI MOTORS B.V.			DM1-160L B5	
			EDITION 1/2000	SHEET

Specification	IEC 60034-1
Manufacturer	Dutchi Motors B.V.
Motor type	DM1- 160 L6
Rated power	11 kW S1 duty
Speed	970 r.p.m
Voltage	400 / 690 V
Frequency	50 Hz
Connection	Δ / Y
Amps full load	22,40 / 12,93 A
Amps no-load(400V)	10,60 A
Enclosure	IP 55
Insulation Class	F (temp. rise B (80 K))
Max. coolant temp.	40°C
Max. altitude	1.000 mtr, above sea level
Comment	3 x PTC 150°C
Cable entries	2 x M40x1,5 + 1 x M20x1,5 (ptc)
Feature	Cast-iron motor
Weight	131 kg
Catalog no.	11236A11D
Warranty	12~18 months

Efficiency class	N/A			
Load data	100%	75%	50%	25%
Efficiency	87,2	87,5	85,8	78,2 %
Power factor	0,81	0,76	0,65	0,44
Sound pressure level (1m)				57,2 dB(A)
Resistance R20 (open)				0,827 Ω
Resistance R20	Δ			0,551 Ω
Full load torque				108,30 Nm
DOL Starting torque vs FL torque				1,88
DOL Pull up torque vs FL torque				1,45
DOL Pull out torque vs FL torque				3,06
Star-Delta Starting torque vs FL torque				0,59
Star-Delta Pull up torque vs FL torque				0,45
Star-Delta Pull out torque vs FL torque				0,96
DOL Starting current vs FL current				6,89
Star Delta Starting current vs FL current				2,15
Rotor Inertia				0,1080 kgm ²
Bearing DE				6309 - ZZ C3
Bearing NDE				6309 - ZZ C3

WI	Change	date	sign.
Dutchi Motors B.V. P.O. Box 5390 NL-6802 EJ ARNHEM Tel : +31-(0)26 - 3541 600 Fax : +31-(0)26 - 3541 650		Discription Drawing made by :	date 19-04-04 sign. HvD
		dutchi.motors@dutchi.nl www.dutchi.com	