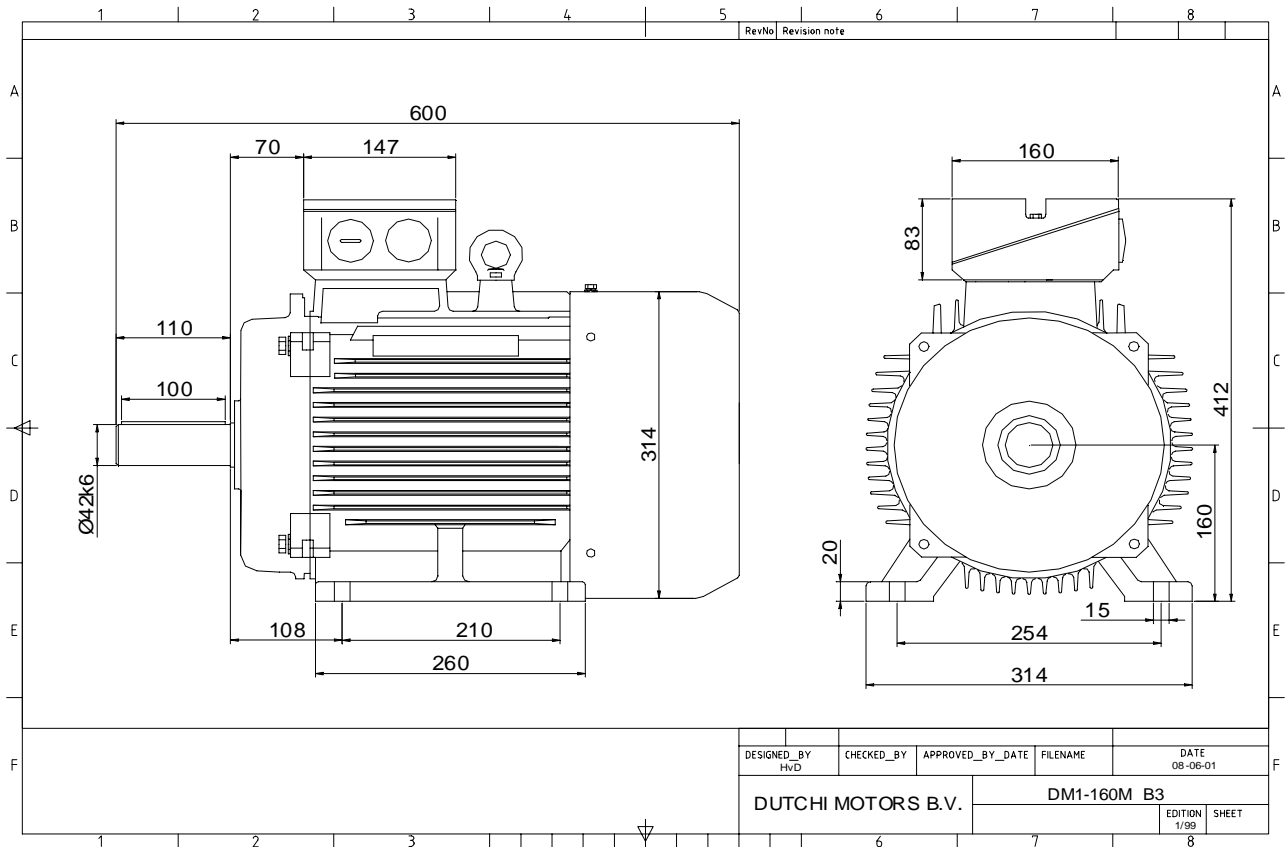


Power is our commodity, the world is our market !



Specification **IEC 60034-1**
 Manufacturer **Dutchi Motors B.V.**
 Motor type **DM1- 160 M8**
 Rated power **4** kW **S1** duty
 Speed **720** r.p.m
 Voltage **400 / 690** V
 Frequency **50** Hz
 Connection **Δ / Y**
 Amps full load **9,30 / 5,37** A
 Amps no-load(400V) **5,70** A
 Enclosure **IP 55**
 Insulation Class **F (temp. rise B (80 K))**

Max. coolant temp. **40°C**
 Max. altitude **1.000** mtr, above sea level
 Comment **3 x PTC 150°C**
 Cable entries **2 x M40x1,5 + 1 x M20x1,5 (ptc)**

Feature **Cast-iron motor**
 Weight **94** kg
 Catalog no. **11138400D**
 Warranty **12~18 months**

Efficiency class **N/A**
 Load data 100% 75% 50% 25%
 Efficiency **82,4 82,8 80,4 71,1** %
 Power factor **0,75 0,68 0,54 0,35**

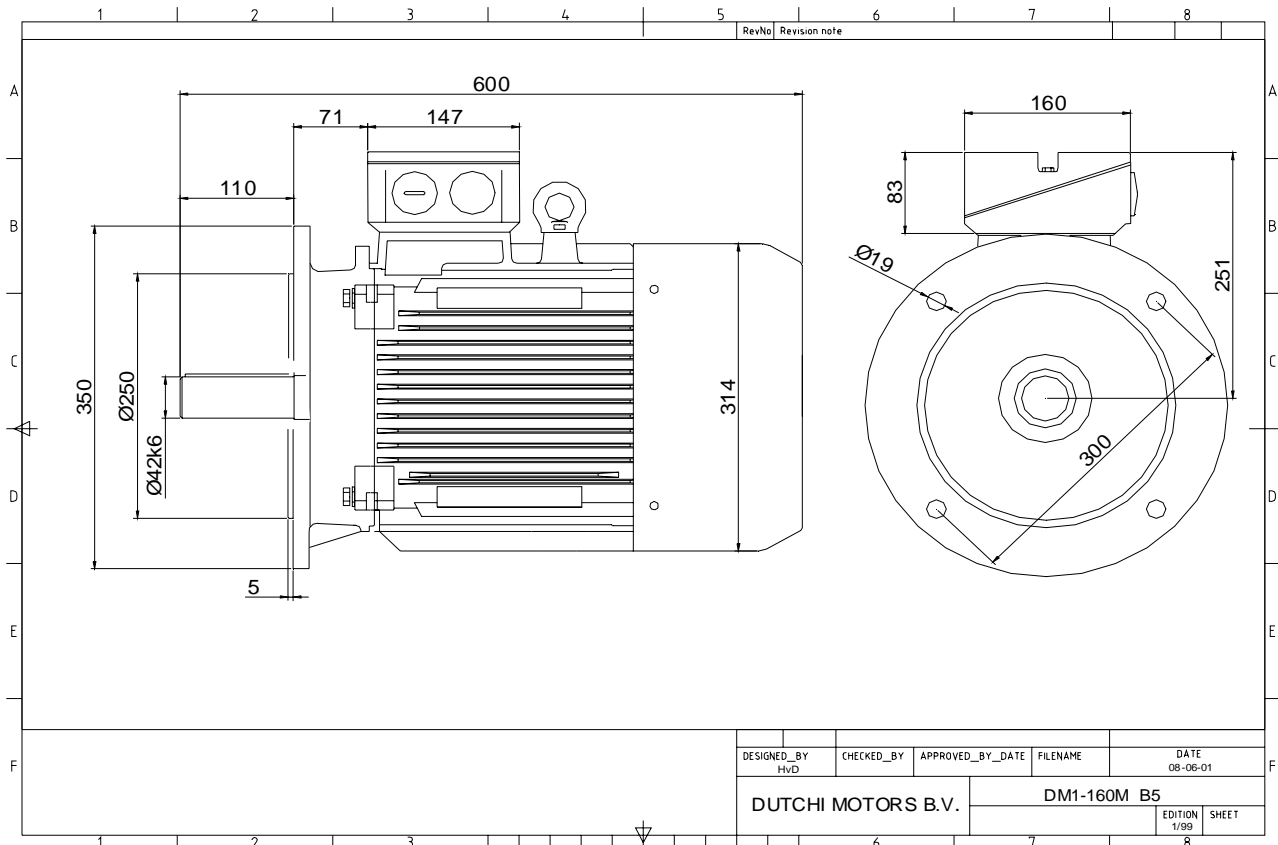
Sound pressure level (1m) **58,8** dB(A)
 Resistance R20 (open) **4,177** Ω
 Resistance R20 **Δ 2,785** Ω

Full load torque **53,06** Nm
 DOL Starting torque vs FL torque **1,82**
 DOL Pull up torque vs FL torque **1,39**
 DOL Pull out torque vs FL torque **2,91**
 Star-Delta Starting torque vs FL torque **0,57**
 Star-Delta Pull up torque vs FL torque **0,43**
 Star-Delta Pull out torque vs FL torque **0,91**
 DOL Starting current vs FL current **5,27**
 Star Delta Starting current vs FL current **1,65**
 Rotor Inertia **0,0649** kgm2

Bearing DE **6309 - ZZ C3**
 Bearing NDE **6309 - ZZ C3**

WI	Change	date	sign.
Dutchi Motors B.V.		Description	date
P.O. Box 5390		Drawing made by :	27-04-04
NL-6802 EJ ARNHEM			
Tel : +31-(0)26 - 3541 600		dutchi.motors@dutchi.nl	
Fax : +31-(0)26 - 3541 650		www.dutchi.com	

Power is our commodity, the world is our market !



Specification **IEC 60034-1**
 Manufacturer **Dutchi Motors B.V.**
 Motor type **DM1- 160 M8**
 Rated power **4** kW **S1** duty
 Speed **720** r.p.m
 Voltage **400 / 690** V
 Frequency **50** Hz
 Connection **Δ / Y**
 Amps full load **9,30 / 5,37** A
 Amps no-load(400V) **5,70** A
 Enclosure **IP 55**
 Insulation Class **F (temp. rise B (80 K))**

Max. coolant temp. **40°C**
 Max. altitude **1.000** mtr, above sea level
 Comment **3 x PTC 150°C**
 Cable entries **2 x M40x1,5 + 1 x M20x1,5 (ptc)**

Feature **Cast-iron motor**
 Weight **94** kg
 Catalog no. **11238400D**
 Warranty **12~18 months**

Efficiency class **N/A**
 Load data 100% 75% 50% 25%
 Efficiency **82,4 82,8 80,4 71,1** %
 Power factor **0,75 0,68 0,54 0,35**

Sound pressure level (1m) **58,8** dB(A)
 Resistance R20 (open) **4,177** Ω
 Resistance R20 **Δ 2,785** Ω

Full load torque **53,06** Nm
 DOL Starting torque vs FL torque **1,82**
 DOL Pull up torque vs FL torque **1,39**
 DOL Pull out torque vs FL torque **2,91**
 Star-Delta Starting torque vs FL torque **0,57**
 Star-Delta Pull up torque vs FL torque **0,43**
 Star-Delta Pull out torque vs FL torque **0,91**
 DOL Starting current vs FL current **5,27**
 Star Delta Starting current vs FL current **1,65**
 Rotor Inertia **0,0649** kgm²

Bearing DE **6309 - ZZ C3**
 Bearing NDE **6309 - ZZ C3**

WI	Change	date	sign.
Dutchi Motors B.V.		Discription	date
P.O. Box 5390		Drawing made by :	27-04-04
NL-6802 EJ ARNHEM			
Tel : +31-(0)26 - 3541 600		dutchi.motors@dutchi.nl	
Fax : +31-(0)26 - 3541 650		www.dutchi.com	