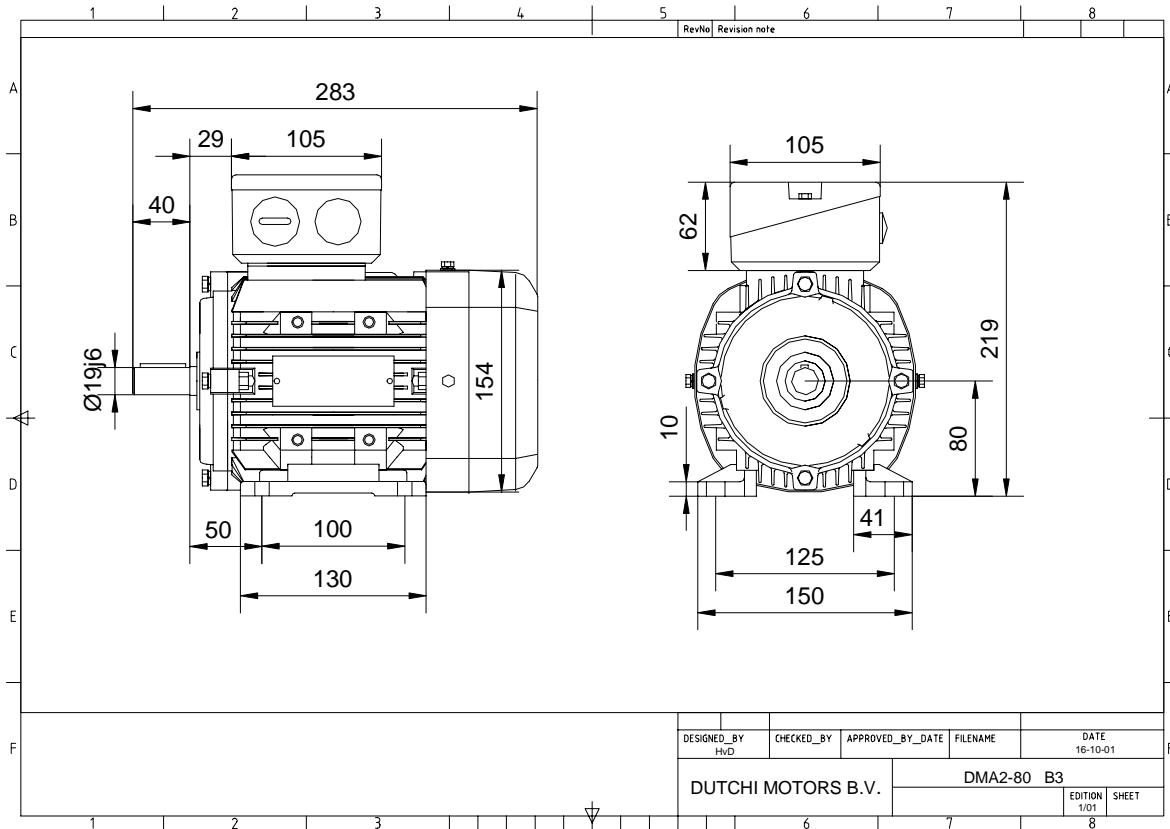


Power is our commodity, the world is our market !



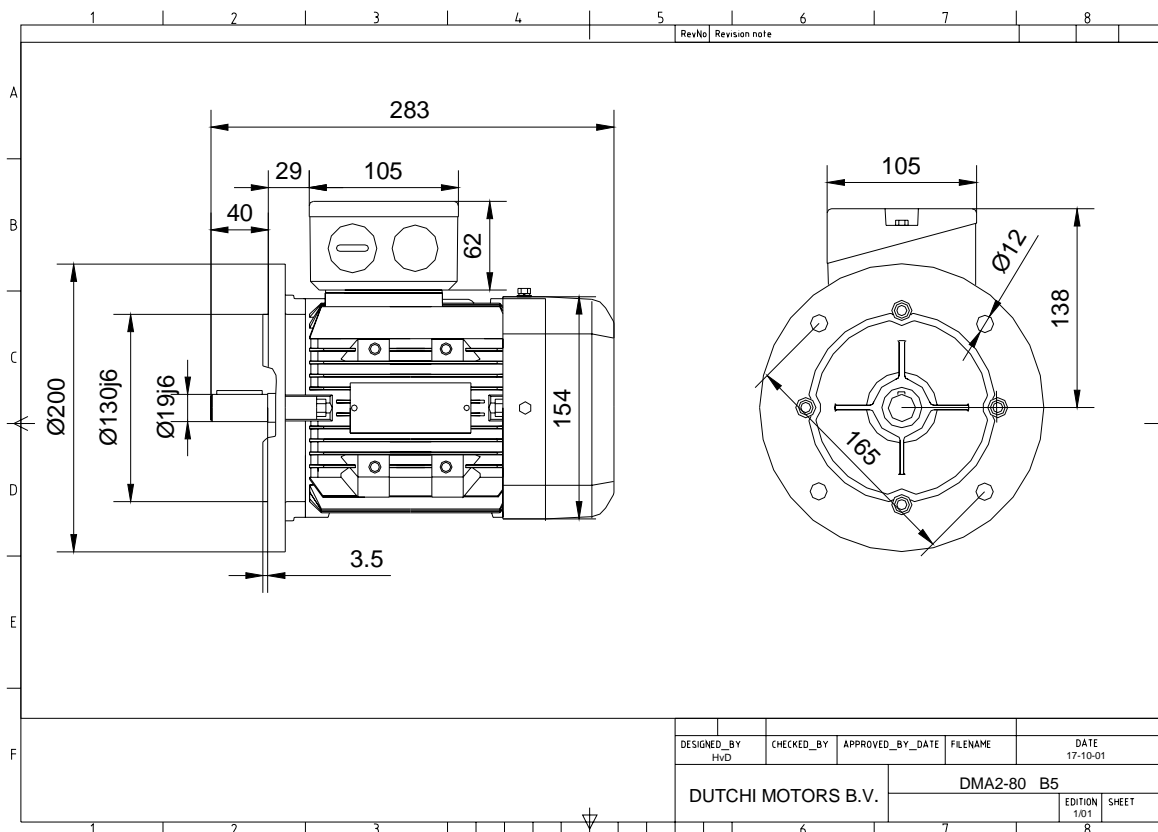
Specification	IEC 60034-1		
Manufacturer	Dutchi Motors B.V.		
Motor type	DMA2-HE 80G2		
Rated power	1,10	kW	S1 duty
Speed	2865	r.p.m	
Voltage	230	/	400 V
Frequency	50	Hz	
Connection	Δ	/	Y
Amps full load	4,0	/	2,3 A
Amps no-load(400V)	1,20	A	
Enclosure	IP 55		
Insulation Class	F (temp. rise B (80 K))		
Max. coolant temp.	40°C		
Max. altitude	1.000	mtr,	above sea level
Comment			
Cable entries	2 x M25x1,5		
Feature	Alumimium motor		
Weight		kg	
Catalog no.	18122110DH		
Warranty	12~18 months		

Efficiency class	EFF 1			
Load data	100%	75%	50%	25%
Efficiency	83,8	84,7	80,5	76,0 %
Power factor	0,82	0,76	0,63	0,41
Sound pressure level (1m)				59,3 dB(A)
Resistance R20 (open)				5,190 Ω
Resistance R20	Y			10,379 Ω
Full load torque				4 Nm
DOL Starting torque vs FL torque				3,56
DOL Pull up torque vs FL torque				1,90
DOL Pull out torque vs FL torque				3,45
Star-Delta Starting torque vs FL torque				Y - motor
Star-Delta Pull up torque vs FL torque				Y - motor
Star-Delta Pull out torque vs FL torque				Y - motor
DOL Starting current vs FL current				7,24
Star Delta Starting current vs FL current				Y - motor
Rotor Inertia				kgm2
Bearing DE				6204 - ZZ
Bearing NDE				6204 - ZZ

WI	Change	date	sign.
Dutchi Motors B.V. P.O. Box 5390 NL-6802 EJ ARNHEM Tel : +31-(0)26 - 3541 600 Fax : +31-(0)26 - 3541 650		Discription	date
		Drawing made by :	05-05-04
		dutchi.motors@dutchi.nl www.dutchi.com	



Power is our commodity, the world is our market !



Specification **IEC 60034-1**
 Manufacturer **Dutchi Motors B.V.**
 Motor type **DMA2-HE 80G2**
 Rated power **1,10** kW **S1** duty
 Speed **2865** r.p.m
 Voltage **230** / **400** V
 Frequency **50** Hz
 Connection **Δ** / **Y**
 Amps full load **4,0** / **2,3** A
 Amps no-load(400V) **1,20** A
 Enclosure **IP 55**
 Insulation Class **F (temp. rise B (80 K))**

Max. coolant temp. **40°C**
 Max. altitude **1.000** mtr, above sea level
 Comment
 Cable entries **2 x M25x1,5**

Feature **Alumimium motor**
 Weight kg
 Catalog no. **18222110DH**
 Warranty **12~18 months**

Efficiency class **EFF 1**

Load data	100%	75%	50%	25%	
Efficiency	83,8	84,7	80,5	76,0	%
Power factor	0,82	0,76	0,63	0,41	

Sound pressure level (1m) **59,3** dB(A)
 Resistance R20 (open) **5,190** Ω
 Resistance R20 **Y** **10,379** Ω

Full load torque **4** Nm
 DOL Starting torque vs FL torque **3,56**
 DOL Pull up torque vs FL torque **1,90**
 DOL Pull out torque vs FL torque **3,45**
 Star-Delta Starting torque vs FL torque **Y - motor**
 Star-Delta Pull up torque vs FL torque **Y - motor**
 Star-Delta Pull out torque vs FL torque **Y - motor**
 DOL Starting current vs FL current **7,24**
 Star Delta Starting current vs FL current **Y - motor**

Rotor Inertia **kgm2**

Bearing DE **6204 - ZZ**
 Bearing NDE **6204 - ZZ**

WI	Change	date	sign.
Dutchi Motors B.V. P.O. Box 5390 NL-6802 EJ ARNHEM Tel : +31-(0)26 - 3541 600 Fax : +31-(0)26 - 3541 650		Discription	date
		Drawing made by :	05-05-04
		dutchi.motors@dutchi.nl www.dutchi.com	