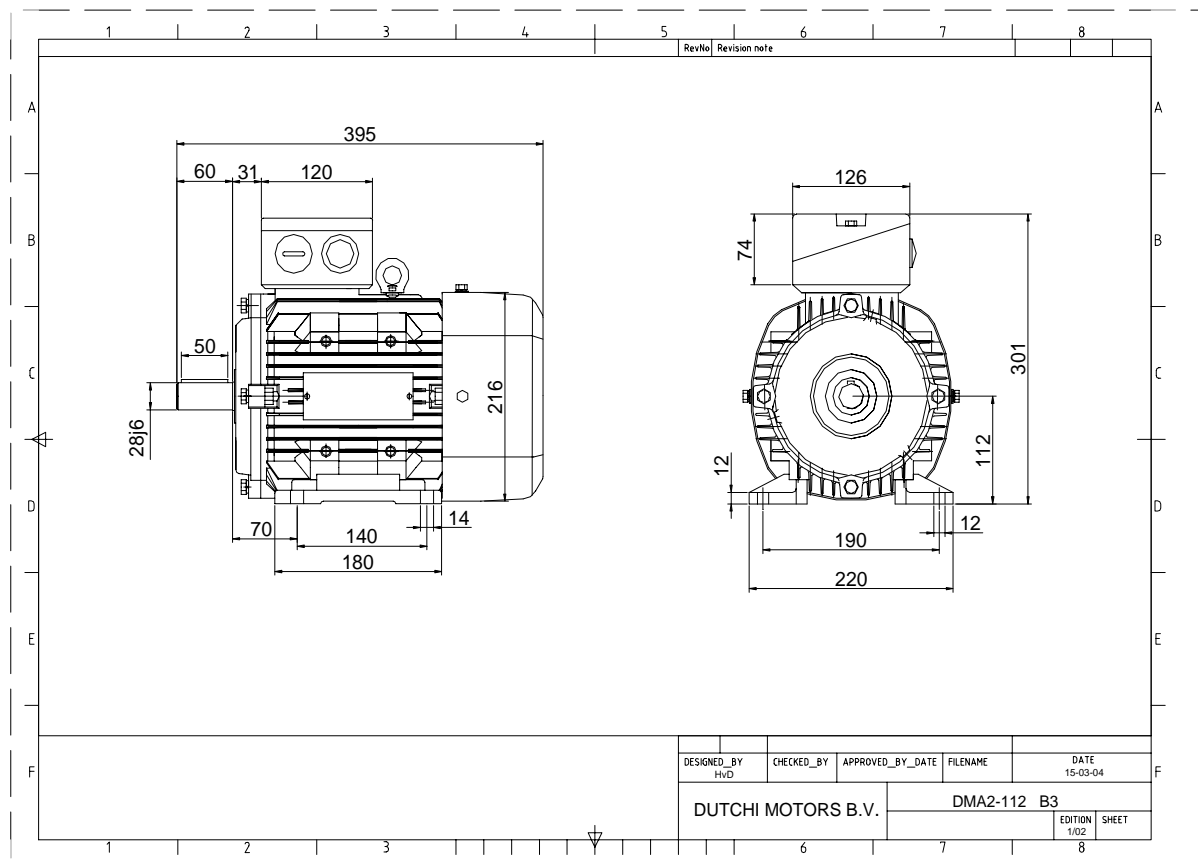


Power is our commodity, the world is our market !

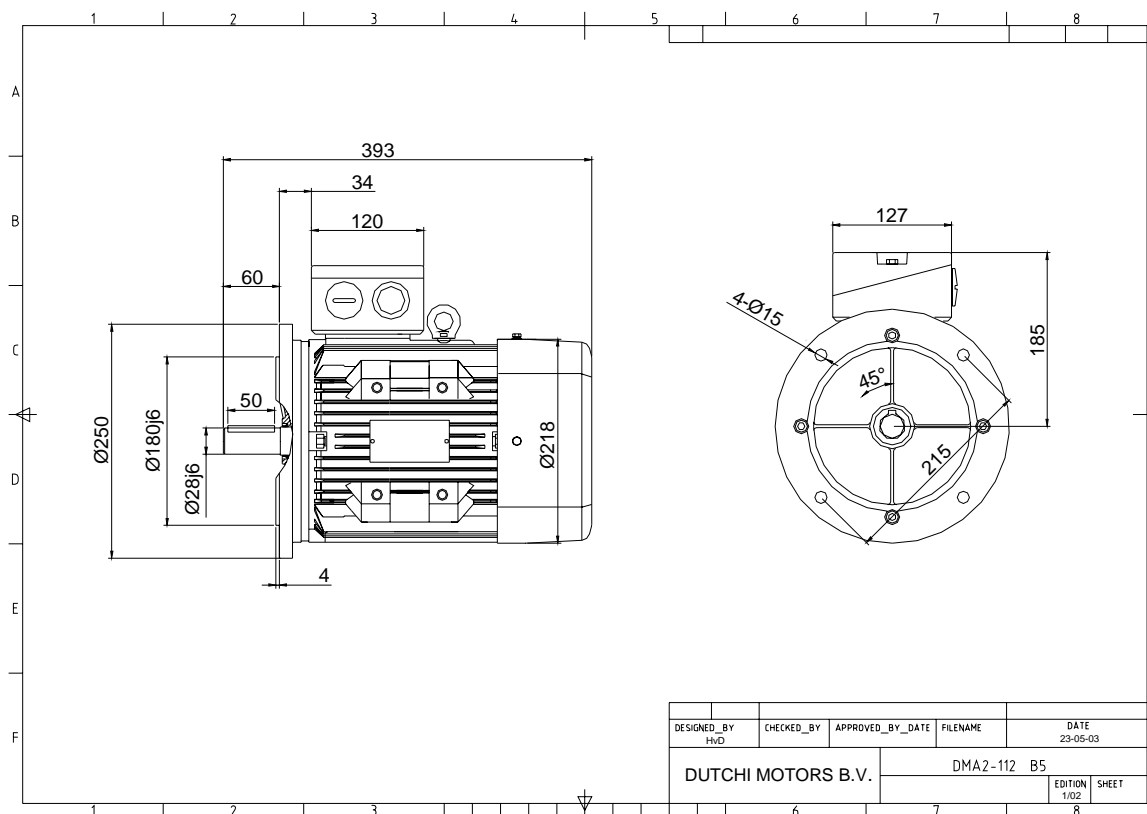


Specification	<b>IEC 60034-1</b>
Manufacturer	<b>Dutchi Motors B.V.</b>
Motor type	<b>DMA2-HE 112M4</b>
Rated power	<b>4,00</b> kW <b>S1</b> duty
Speed	<b>1440</b> r.p.m
Voltage	<b>400</b> / <b>690</b> V
Frequency	<b>50</b> Hz
Connection	<b>Δ</b> / <b>Y</b>
Amps full load	<b>8,16</b> / <b>4,71</b> A
Amps no-load(400V)	<b>4,68</b> A
Enclosure	<b>IP 55</b>
Insulation Class	<b>F (temp. rise B (80 K))</b>
Max. coolant temp.	<b>40°C</b>
Max. altitude	<b>1.000</b> mtr, above sea level
Comment	
Cable entries	<b>2 x M32x1,5</b>
Feature	<b>Alumimium motor</b>
Weight	kg
Catalog no.	<b>18134400DH</b>
Warranty	<b>12~18 months</b>

Efficiency class	<b>EFF 1</b>			
Load data	100%	75%	50%	25%
Efficiency	<b>88,7</b>	<b>89,3</b>	<b>88,5</b>	<b>82,9</b> %
Power factor	<b>0,80</b>	<b>0,74</b>	<b>0,61</b>	<b>0,38</b>
Sound pressure level (1m)				<b>55,1</b> dB(A)
Resistance R20 (open)				<b>2,66</b> Ω
Resistance R20	<b>Δ</b>			<b>1,78</b> Ω
Full load torque				<b>26,53</b> Nm
DOL Starting torque vs FL torque				<b>2,45</b>
DOL Pull up torque vs FL torque				<b>1,99</b>
DOL Pull out torque vs FL torque				<b>5,04</b>
Star-Delta Starting torque vs FL torque				<b>0,77</b>
Star-Delta Pull up torque vs FL torque				<b>0,62</b>
Star-Delta Pull out torque vs FL torque				<b>1,58</b>
DOL Starting current vs FL current				<b>6,61</b>
Star Delta Starting current vs FL current				<b>2,07</b>
Rotor Inertia				kgm2
Bearing DE				<b>6306 - ZZ C3</b>
Bearing NDE				<b>6306 - ZZ C3</b>


WI	Change	date	sign.
<b>Dutchi Motors B.V.</b> P.O. Box 5390 NL-6802 EJ ARNHEM Tel : +31-(0)26 - 3541 600 Fax : +31-(0)26 - 3541 650		Discription	date
		Drawing made by :	05-05-04
		<b>dutchi.motors@dutchi.nl</b> <b>www.dutchi.com</b>	

Power is our commodity, the world is our market !



Specification **IEC 60034-1**  
 Manufacturer **Dutchi Motors B.V.**  
 Motor type **DMA2-HE 112M4**  
 Rated power **4,00** kW **S1** duty  
 Speed **1440** r.p.m  
 Voltage **400** / **690** V  
 Frequency **50** Hz  
 Connection **Δ** / **Y**  
 Amps full load **8,16** / **4,71** A  
 Amps no-load(400V) **4,68** A  
 Enclosure **IP 55**  
 Insulation Class **F (temp. rise B (80 K))**

Max. coolant temp. **40°C**  
 Max. altitude **1.000** mtr, above sea level  
 Comment  
 Cable entries **2 x M32x1,5**

Feature **Alumimium motor**  
 Weight kg  
 Catalog no. **18234400DH**  
 Warranty **12~18 months**

Efficiency class **EFF 1**

Load data	100%	75%	50%	25%	
Efficiency	<b>88,7</b>	<b>89,3</b>	<b>88,5</b>	<b>82,9</b>	%
Power factor	<b>0,80</b>	<b>0,74</b>	<b>0,61</b>	<b>0,38</b>	

Sound pressure level (1m) **55,1** dB(A)  
 Resistance R20 (open) **2,66** Ω  
 Resistance R20 **Δ 1,78** Ω

Full load torque **26,53** Nm  
 DOL Starting torque vs FL torque **2,45**  
 DOL Pull up torque vs FL torque **1,99**  
 DOL Pull out torque vs FL torque **5,04**  
 Star-Delta Starting torque vs FL torque **0,77**  
 Star-Delta Pull up torque vs FL torque **0,62**  
 Star-Delta Pull out torque vs FL torque **1,58**  
 DOL Starting current vs FL current **6,61**  
 Star Delta Starting current vs FL current **2,07**

Rotor Inertia **kgm2**

Bearing DE **6306 - ZZ C3**  
 Bearing NDE **6306 - ZZ C3**


WI	Change	date	sign.
Dutchi Motors B.V. P.O. Box 5390 NL-6802 EJ ARNHEM Tel : +31-(0)26 - 3541 600 Fax : +31-(0)26 - 3541 650		Discription	date
		Drawing made by :	05-05-04
		dutchi.motors@dutchi.nl	
		www.dutchi.com	