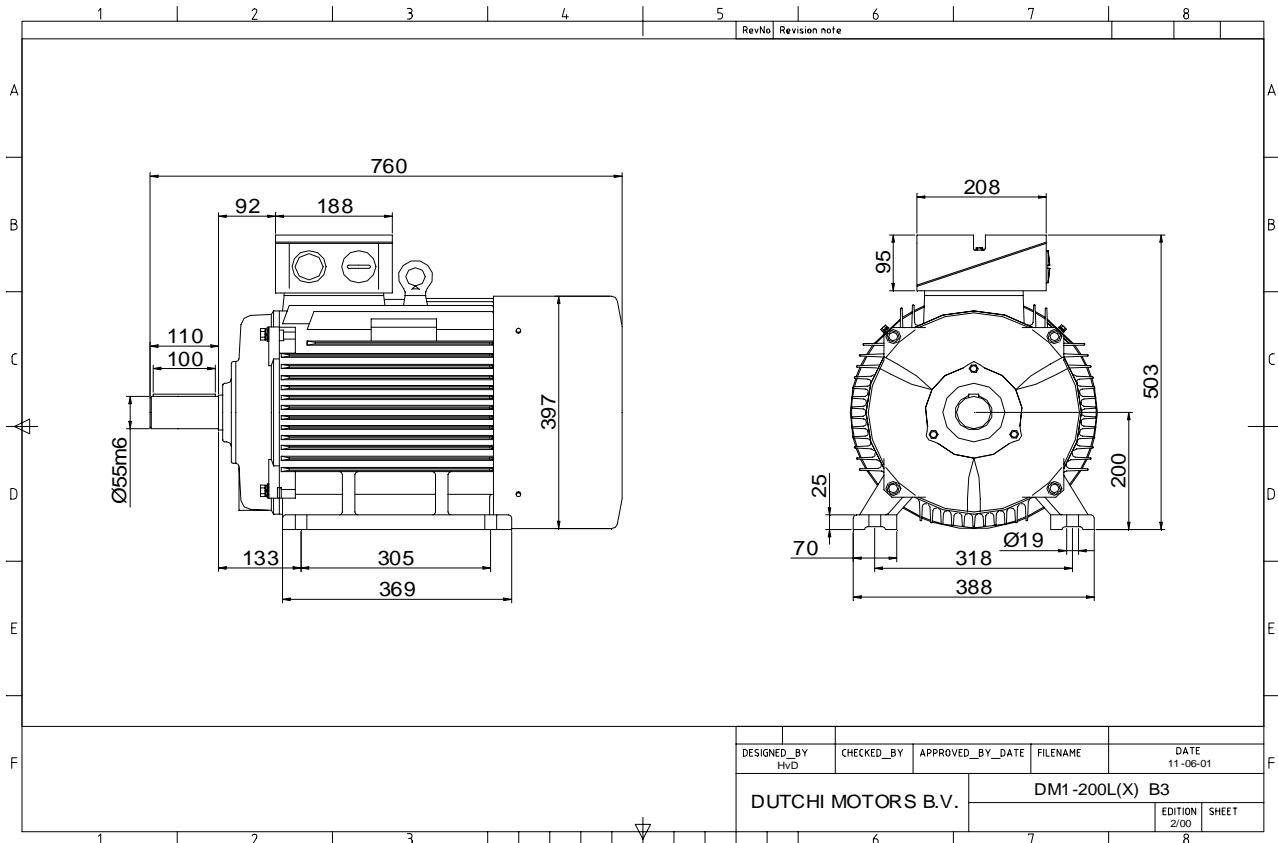


Power is our commodity, the world is our market !



Specification **IEC 60034-1**
 Manufacturer **Dutchi Motors B.V.**
 Motor type **DM1-HE 200L4**
 Rated power **30,0** kW **S1** duty
 Speed **1470** r.p.m
 Voltage **400** / **690** V
 Frequency **50** Hz
 Connection **Δ** / **Y**
 Amps full load **50,9** / **29,4** A
 Amps no-load(400V) **13,50** A
 Enclosure **IP 55**
 Insulation Class **F (temp. rise B (80 K))**

Max. coolant temp. **40°C**
 Max. altitude **1.000** mtr, above sea level
 Comment **3 x PTC 150°C**
 Cable entries **2 x M50x1,5 + 1 x M20x1,5 (ptc)**

Feature **Cast-iron motor**
 Weight **kg**
 Catalog no. **11134A30DH**
 Warranty **12~18 months**

Efficiency class **EFF 1**
 Load data 100% 75% 50% 25%
 Efficiency **93,2 93,5 92,8 89,1** %
 Power factor **0,91 0,90 0,85 0,69**

Sound pressure level (1m) **63,8** dB(A)
 Resistance R20 (open) **0,206** Ω
 Resistance R20 **Δ 0,137** Ω

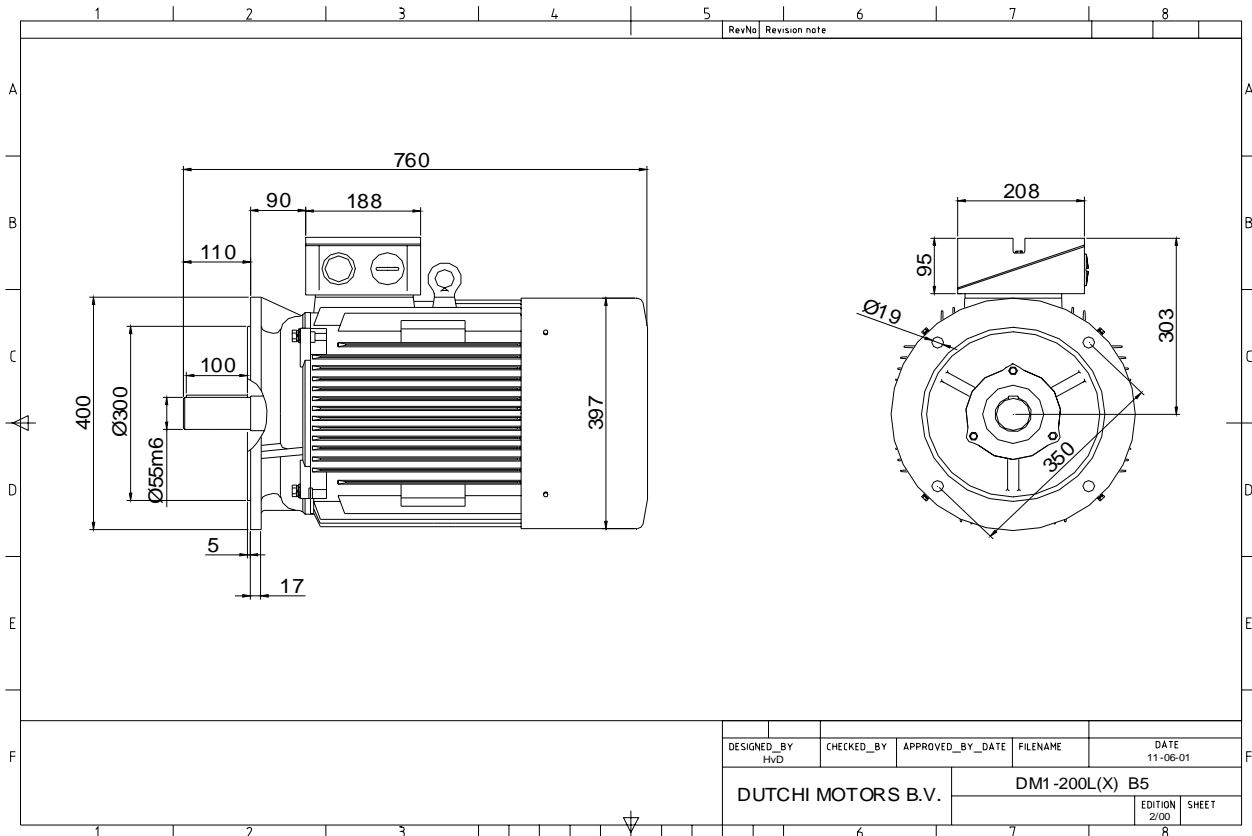
Full load torque **195** Nm
 DOL Starting torque vs FL torque **1,91**
 DOL Pull up torque vs FL torque **1,40**
 DOL Pull out torque vs FL torque **2,81**
 Star-Delta Starting torque vs FL torque **0,60**
 Star-Delta Pull up torque vs FL torque **0,44**
 Star-Delta Pull out torque vs FL torque **0,88**
 DOL Starting current vs FL current **6,46**
 Star Delta Starting current vs FL current **2,02**

Rotor Inertia **kgm2**

Bearing DE **6312 - ZZ C3**
 Bearing NDE **6312 - ZZ C3**

WI	Change	date	sign.
Dutchi Motors B.V.		Description	date
P.O. Box 5390		Drawing made by :	27-04-04
NL-6802 EJ ARNHEM			
Tel : +31-(0)26 - 3541 600		dutchi.motors@dutchi.nl	
Fax : +31-(0)26 - 3541 650		www.dutchi.com	

Power is our commodity, the world is our market !



Specification	IEC 60034-1
Manufacturer	Dutchi Motors B.V.
Motor type	DM1-HE 200L4
Rated power	30,0 kW S1 duty
Speed	1470 r.p.m
Voltage	400 / 690 V
Frequency	50 Hz
Connection	Δ / Y
Amps full load	50,9 / 29,4 A
Amps no-load(400V)	13,50 A
Enclosure	IP 55
Insulation Class	F (temp. rise B (80 K))
Max. coolant temp.	40°C
Max. altitude	1.000 mtr, above sea level
Comment	3 x PTC 150°C
Cable entries	2 x M50x1,5 + 1 x M20x1,5 (ptc)
Feature	Cast-iron motor
Weight	kg
Catalog no.	11234A30DH
Warranty	12~18 months

Efficiency class	EFF 1			
Load data	100%	75%	50%	25%
Efficiency	93,2	93,5	92,8	89,1 %
Power factor	0,91	0,90	0,85	0,69
Sound pressure level (1m)				63,8 dB(A)
Resistance R20 (open)				0,206 Ω
Resistance R20	Δ			0,137 Ω
Full load torque				195 Nm
DOL Starting torque vs FL torque				1,91
DOL Pull up torque vs FL torque				1,40
DOL Pull out torque vs FL torque				2,81
Star-Delta Starting torque vs FL torque				0,60
Star-Delta Pull up torque vs FL torque				0,44
Star-Delta Pull out torque vs FL torque				0,88
DOL Starting current vs FL current				6,46
Star Delta Starting current vs FL current				2,02
Rotor Inertia				kgm ²
Bearing DE				6312 - ZZ C3
Bearing NDE				6312 - ZZ C3

WI	Change	date	sign.
Dutchi Motors B.V. P.O. Box 5390 NL-6802 EJ ARNHEM Tel : +31-(0)26 - 3541 600 Fax : +31-(0)26 - 3541 650		Discription Drawing made by :	date sign. HvD
dutchi.motors@dutchi.nl www.dutchi.com		27-04-04	