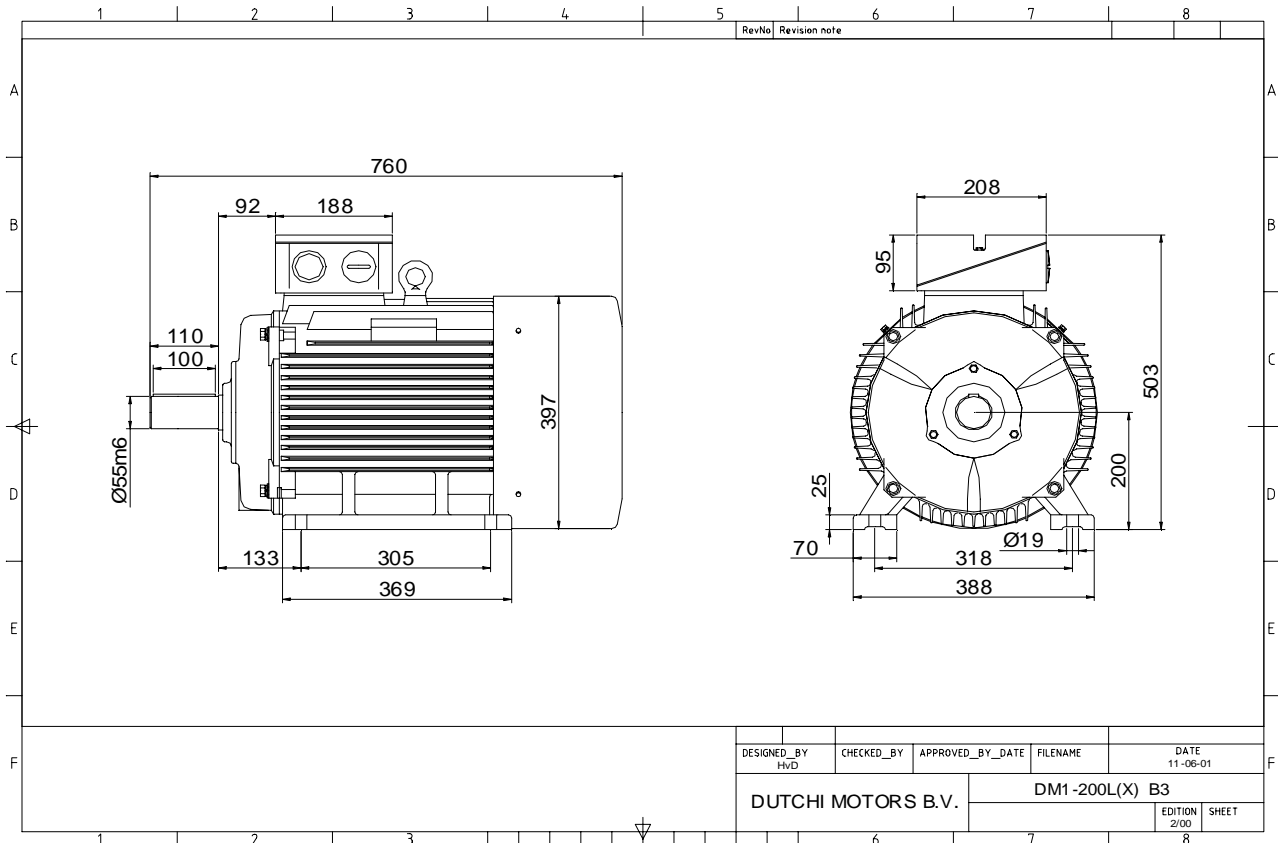


Power is our commodity, the world is our market !

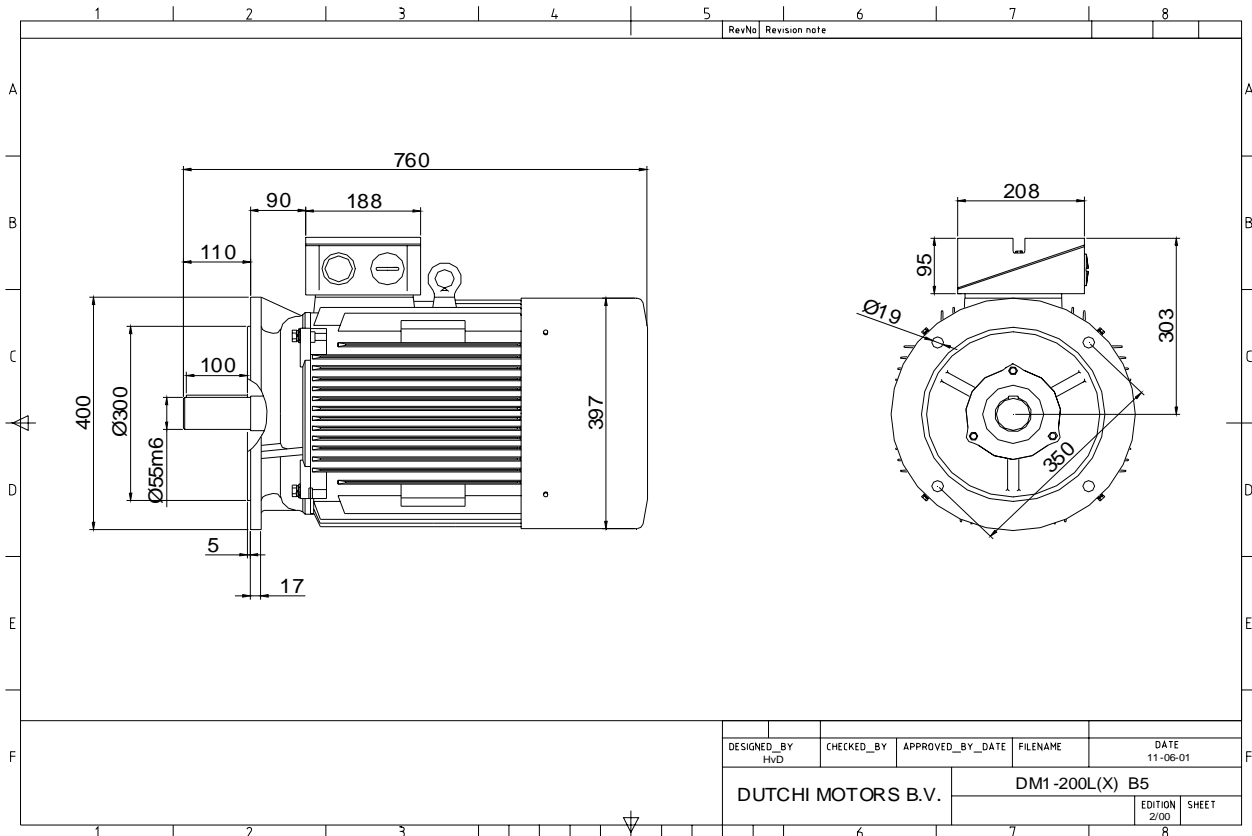


Specification	IEC 60034-1
Manufacturer	Dutchi Motors B.V.
Motor type	DM1-HE 200LX2
Rated power	37,0 kW S1 duty
Speed	2950 r.p.m
Voltage	400 / 690 V
Frequency	50 Hz
Connection	Δ / Y
Amps full load	62,4 / 36,0 A
Amps no-load(400V)	12,80 A
Enclosure	IP 55
Insulation Class	F (temp. rise B (80 K))
Max. coolant temp.	40°C
Max. altitude	1.000 mtr, above sea level
Comment	3 x PTC 150°C
Cable entries	2 x M50x1,5 + 1 x M20x1,5 (ptc)
Feature	Cast-iron motor
Weight	kg
Catalog no.	11134A30DH
Warranty	12~18 months

Efficiency class	EFF 1			
Load data	100%	75%	50%	25%
Efficiency	93,3	93,1	92,1	87,5 %
Power factor	0,92	0,91	0,88	0,77
Sound pressure level (1m)				78,3 dB(A)
Resistance R20 (open)				0,146 Ω
Resistance R20	Δ			0,097 Ω
Full load torque				120 Nm
DOL Starting torque vs FL torque				2,24
DOL Pull up torque vs FL torque				1,65
DOL Pull out torque vs FL torque				3,30
Star-Delta Starting torque vs FL torque				0,70
Star-Delta Pull up torque vs FL torque				0,52
Star-Delta Pull out torque vs FL torque				1,03
DOL Starting current vs FL current				7,68
Star Delta Starting current vs FL current				2,40
Rotor Inertia				kgm ²
Bearing DE				6312 - ZZ C3
Bearing NDE				6312 - ZZ C3

WI	Change	date	sign.
Dutchi Motors B.V.		Description	date
P.O. Box 5390		Drawing made by :	27-04-04
NL-6802 EJ ARNHEM			
Tel : +31-(0)26 - 3541 600		dutchi.motors@dutchi.nl	
Fax : +31-(0)26 - 3541 650		www.dutchi.com	

Power is our commodity, the world is our market !



Specification	IEC 60034-1
Manufacturer	Dutchi Motors B.V.
Motor type	DM1-HE 200LX2
Rated power	37,0 kW S1 duty
Speed	2950 r.p.m
Voltage	400 / 690 V
Frequency	50 Hz
Connection	Δ / Y
Amps full load	62,4 / 36,0 A
Amps no-load(400V)	12,80 A
Enclosure	IP 55
Insulation Class	F (temp. rise B (80 K))
Max. coolant temp.	40°C
Max. altitude	1.000 mtr, above sea level
Comment	3 x PTC 150°C
Cable entries	2 x M50x1,5 + 1 x M20x1,5 (ptc)
Feature	Cast-iron motor
Weight	kg
Catalog no.	11234A30DH
Warranty	12~18 months

Efficiency class	EFF 1			
Load data	100%	75%	50%	25%
Efficiency	93,3	93,1	92,1	87,5 %
Power factor	0,92	0,91	0,88	0,77
Sound pressure level (1m)				78,3 dB(A)
Resistance R20 (open)				0,146 Ω
Resistance R20	Δ			0,097 Ω
Full load torque				120 Nm
DOL Starting torque vs FL torque				2,24
DOL Pull up torque vs FL torque				1,65
DOL Pull out torque vs FL torque				3,30
Star-Delta Starting torque vs FL torque				0,70
Star-Delta Pull up torque vs FL torque				0,52
Star-Delta Pull out torque vs FL torque				1,03
DOL Starting current vs FL current				7,68
Star Delta Starting current vs FL current				2,40
Rotor Inertia				kgm ²
Bearing DE				6312 - ZZ C3
Bearing NDE				6312 - ZZ C3

WI	Change	date	sign.
Dutchi Motors B.V. P.O. Box 5390 NL-6802 EJ ARNHEM Tel : +31-(0)26 - 3541 600 Fax : +31-(0)26 - 3541 650		Discription Drawing made by :	date sign. HvD
dutchi.motors@dutchi.nl www.dutchi.com		27-04-04	