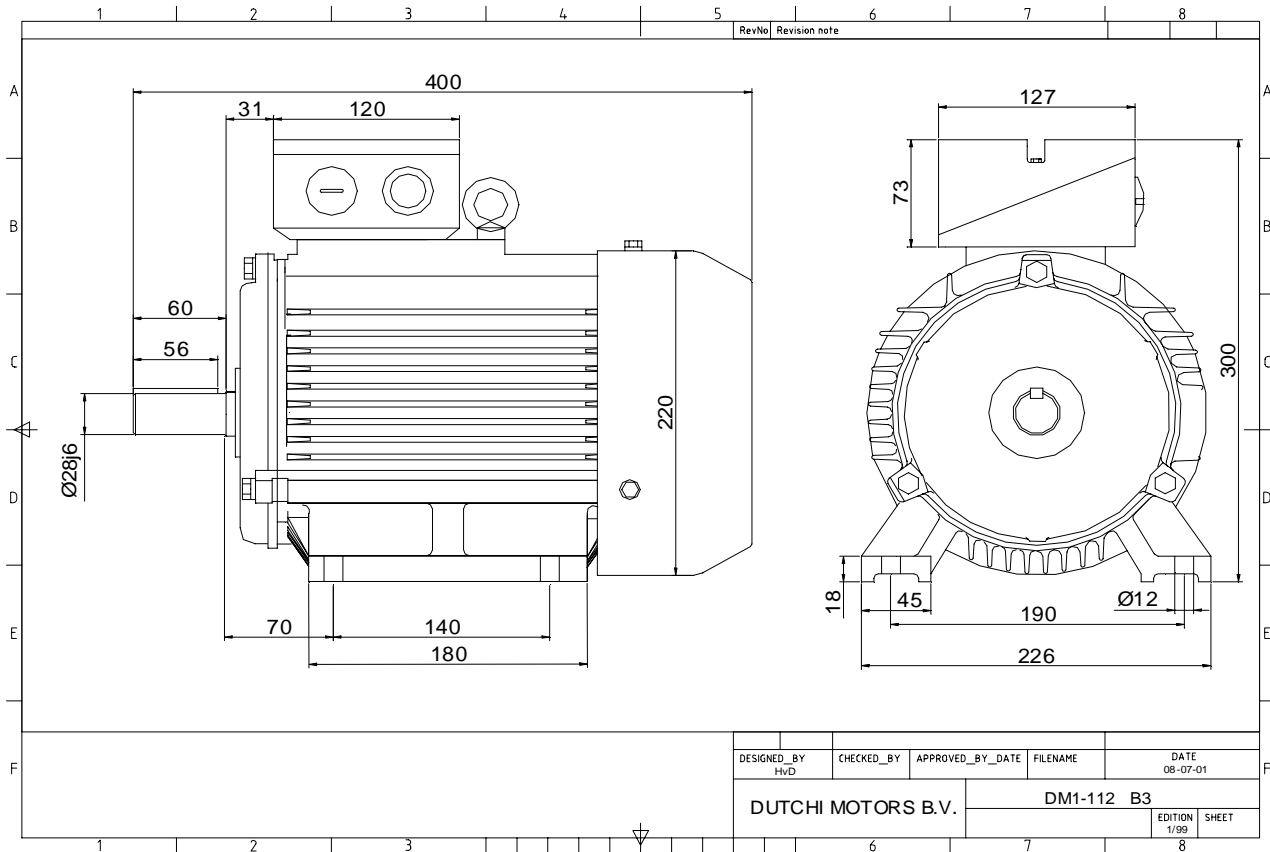


Power is our commodity, the world is our market !

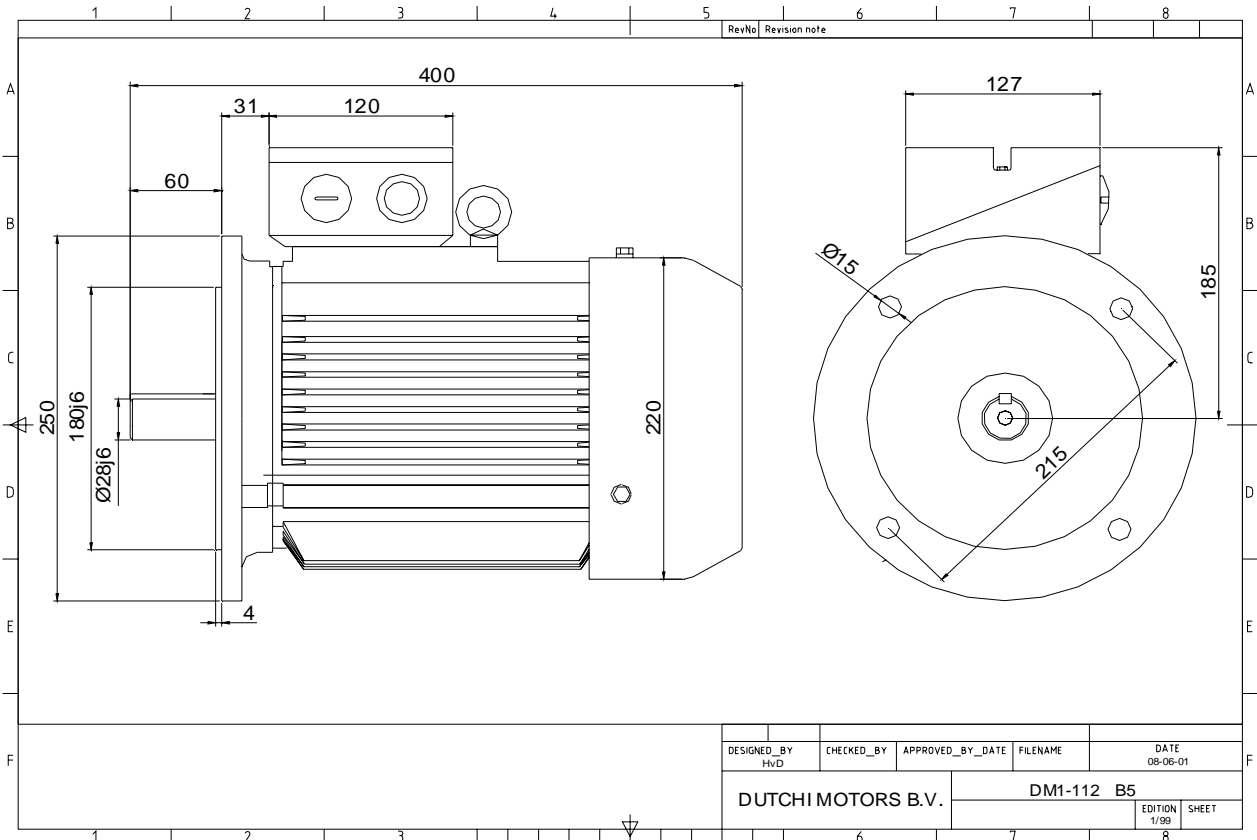


Specification	IEC 60034-1
Manufacturer	Dutchi Motors B.V.
Motor type	DM1-HE 112M4
Rated power	4,00 kW S1 duty
Speed	1440 r.p.m
Voltage	400 / 690 V
Frequency	50 Hz
Connection	Δ / Y
Amps full load	7,81 / 4,51 A
Amps no-load(400V)	3,76 A
Enclosure	IP 55
Insulation Class	F (temp. rise B (80 K))
Max. coolant temp.	40°C
Max. altitude	1.000 mtr, above sea level
Comment	3 x PTC 150°C
Cable entries	2 x M32x1,5 + 1 x M20x1,5 (ptc)
Feature	Cast-iron motor
Weight	kg
Catalog no.	11134400DH
Warranty	12~18 months

Efficiency class	EFF 1
Load data	100% 75% 50% 25%
Efficiency	88,4 87,9 85,8 78,2 %
Power factor	0,84 0,77 0,64 0,43
Sound pressure level (1m)	51,9 dB(A)
Resistance R20 (open)	2,53 Ω
Resistance R20	Δ 1,68 Ω
Full load torque	26,53 Nm
DOL Starting torque vs FL torque	2,48
DOL Pull up torque vs FL torque	1,78
DOL Pull out torque vs FL torque	3,46
Star-Delta Starting torque vs FL torque	0,77
Star-Delta Pull up torque vs FL torque	0,56
Star-Delta Pull out torque vs FL torque	1,08
DOL Starting current vs FL current	7,02
Star Delta Starting current vs FL current	2,19
Rotor Inertia	kgm ²
Bearing DE	6306 - ZZ C3
Bearing NDE	6306 - ZZ C3

WI	Change	date	sign.
Dutchi Motors B.V. P.O. Box 5390 NL-6802 EJ ARNHEM Tel : +31-(0)26 - 3541 600 Fax : +31-(0)26 - 3541 650		Discription Drawing made by :	date 19-04-04 sign. HvD
		dutchi.motors@dutchi.nl www.dutchi.com	

Power is our commodity, the world is our market !



Specification	IEC 60034-1
Manufacturer	Dutchi Motors B.V.
Motor type	DM1-HE 112M4
Rated power	4,00 kW S1 duty
Speed	1440 r.p.m
Voltage	400 / 690 V
Frequency	50 Hz
Connection	Δ / Y
Amps full load	7,81 / 4,51 A
Amps no-load(400V)	3,76 A
Enclosure	IP 55
Insulation Class	F (temp. rise B (80 K))
Max. coolant temp.	40°C
Max. altitude	1.000 mtr, above sea level
Comment	3 x PTC 150°C
Cable entries	2 x M32x1,5 + 1 x M20x1,5 (ptc)
Feature	Cast-iron motor
Weight	kg
Catalog no.	11234400DH
Warranty	12~18 months

Efficiency class	EFF 1
Load data	100% 75% 50% 25%
Efficiency	88,4 87,9 85,8 78,2 %
Power factor	0,84 0,77 0,64 0,43
Sound pressure level (1m)	51,9 dB(A)
Resistance R20 (open)	2,53 Ω
Resistance R20	Δ 1,68 Ω
Full load torque	26,53 Nm
DOL Starting torque vs FL torque	2,48
DOL Pull up torque vs FL torque	1,78
DOL Pull out torque vs FL torque	3,46
Star-Delta Starting torque vs FL torque	0,77
Star-Delta Pull up torque vs FL torque	0,56
Star-Delta Pull out torque vs FL torque	1,08
DOL Starting current vs FL current	7,02
Star Delta Starting current vs FL current	2,19
Rotor Inertia	kgm ²
Bearing DE	6306 - ZZ C3
Bearing NDE	6306 - ZZ C3

WI	Change	date	sign.
Dutchi Motors B.V. P.O. Box 5390 NL-6802 EJ ARNHEM Tel : +31-(0)26 - 3541 600 Fax : +31-(0)26 - 3541 650		Discription Drawing made by :	date sign. HvD
		dutchi.motors@dutchi.nl www.dutchi.com	