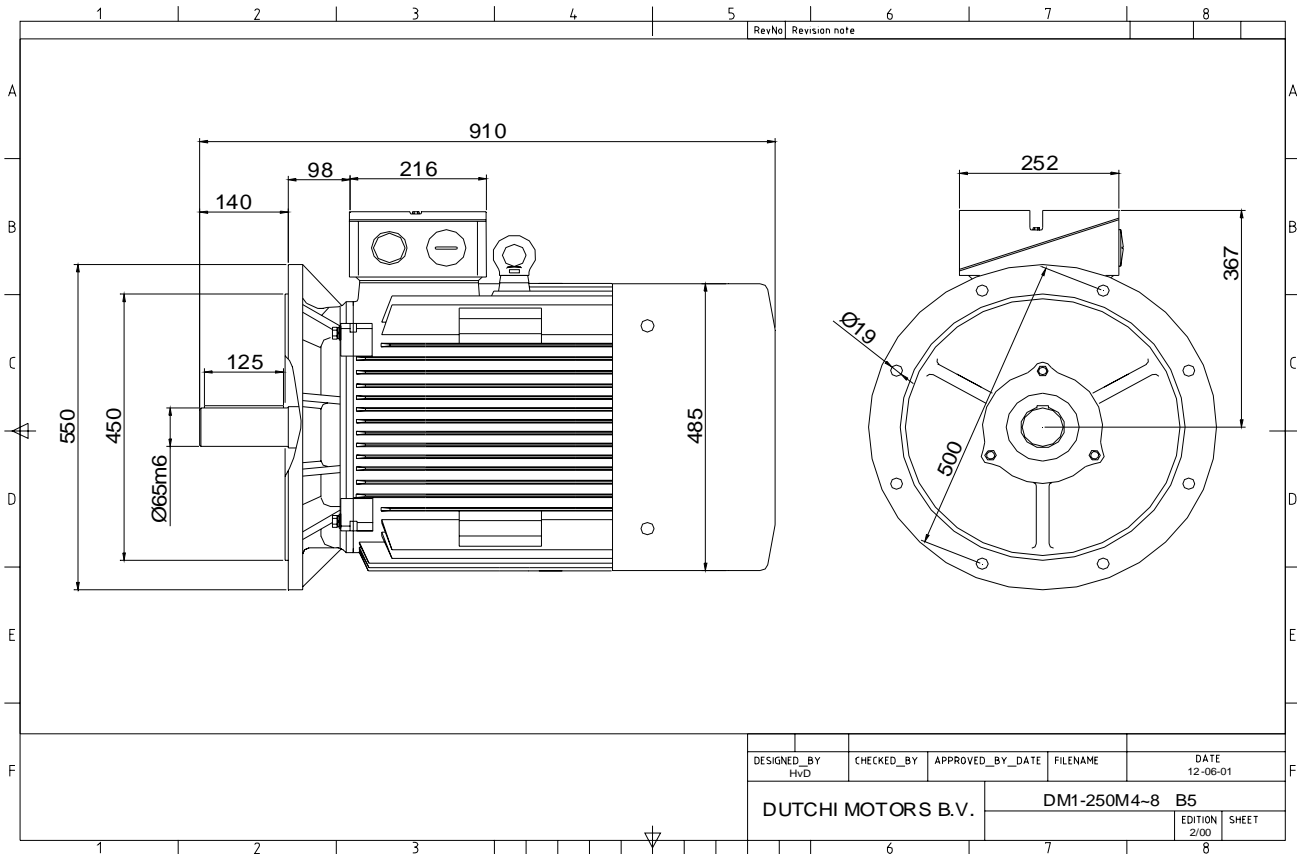


**Specification IEC 60034-1**  
**Manufacturer Dutchi Motors B.V.**  
**Motor type DM1-HE 250M4**  
**Rated power 55,0 kW S1 duty**  
**Speed 1485 r.p.m**  
**Voltage 400 / 690 V**  
**Frequency 50 Hz**  
**Connection Δ / Y**  
**Amps full load 95,3 / 55,0 A**  
**Amps no-load(400V) 27,30 A**  
**Enclosure IP 55**  
**Insulation Class F (temp. rise B (80 K))**  
  
**Max. coolant temp. 40°C**  
**Max. altitude 1.000 mtr, above sea level**  
**Comment 3 x PTC 150°C**  
**Cable entries 2 x M63x1,5 + 1 x M20x1,5 (ptc)**  
  
**Feature Cast-iron motor**  
**Weight kg**  
**Catalog no. 11134A55DH**  
**Warranty 12~18 months**

**Efficiency class EFF 1**  
**Load data 100% 75% 50% 25%**  
**Efficiency 94,5 94,7 94,1 90,7 %**  
**Power factor 0,88 0,86 0,81 0,64**  
  
**Sound pressure level (1m) 72,5 dB(A)**  
**Resistance R20 (open) 0,098 Ω**  
**Resistance R20 Δ 0,065 Ω**  
  
**Full load torque 354 Nm**  
**DOL Starting torque vs FL torque 2,25**  
**DOL Pull up torque vs FL torque 1,63**  
**DOL Pull out torque vs FL torque 3,28**  
**Star-Delta Starting torque vs FL torque 0,70**  
**Star-Delta Pull up torque vs FL torque 0,51**  
**Star-Delta Pull out torque vs FL torque 1,02**  
**DOL Starting current vs FL current 7,57**  
**Star Delta Starting current vs FL current 2,36**  
  
**Rotor Inertia kgm2**  
  
**Bearing DE 6314 - ZZ C3**  
**Bearing NDE 6314 - ZZ C3**


WI	Change	date	sign.
Dutchi Motors B.V.		Discription	sign.
P.O. Box 5390		date	
NL-6802 EJ ARNHEM		Drawing made by :	HvD
Tel : +31-(0)26 - 3541 600			
Fax : +31-(0)26 - 3541 650		<b>dutchi.motors@dutchi.nl</b> <b>www.dutchi.com</b>	

Power is our commodity, the world is our market !



Specification **IEC 60034-1**  
 Manufacturer **Dutchi Motors B.V.**  
 Motor type **DM1-HE 250M4**  
 Rated power **55,0** kW **S1** duty  
 Speed **1485** r.p.m  
 Voltage **400** / **690** V  
 Frequency **50** Hz  
 Connection **Δ** / **Y**  
 Amps full load **95,3** / **55,0** A  
 Amps no-load(400V) **27,30** A  
 Enclosure **IP 55**  
 Insulation Class **F (temp. rise B (80 K))**

Max. coolant temp. **40°C**  
 Max. altitude **1.000** mtr, above sea level  
 Comment **3 x PTC 150°C**  
 Cable entries **2 x M63x1,5 + 1 x M20x1,5 (ptc)**

Feature **Cast-iron motor**  
 Weight kg  
 Catalog no. **11234A55DH**  
 Warranty **12~18 months**

Efficiency class **EFF 1**  
 Load data 100% 75% 50% 25%  
 Efficiency **94,5 94,7 94,1 90,7** %  
 Power factor **0,88 0,86 0,81 0,64**

Sound pressure level (1m) **72,5** dB(A)  
 Resistance R20 (open) **0,098** Ω  
 Resistance R20 **Δ 0,065** Ω

Full load torque **354** Nm  
 DOL Starting torque vs FL torque **2,25**  
 DOL Pull up torque vs FL torque **1,63**  
 DOL Pull out torque vs FL torque **3,28**  
 Star-Delta Starting torque vs FL torque **0,70**  
 Star-Delta Pull up torque vs FL torque **0,51**  
 Star-Delta Pull out torque vs FL torque **1,02**  
 DOL Starting current vs FL current **7,57**  
 Star Delta Starting current vs FL current **2,36**

Rotor Inertia kgm<sup>2</sup>

Bearing DE **6314 - ZZ C3**  
 Bearing NDE **6314 - ZZ C3**


WI	Change	date	sign.
Dutchi Motors B.V.		Description	date
P.O. Box 5390		Drawing made by :	27-04-04
NL-6802 EJ ARNHEM			
Tel : +31-(0)26 - 3541 600		<b>dutchi.motors@dutchi.nl</b>	
Fax : +31-(0)26 - 3541 650		<b>www.dutchi.com</b>	