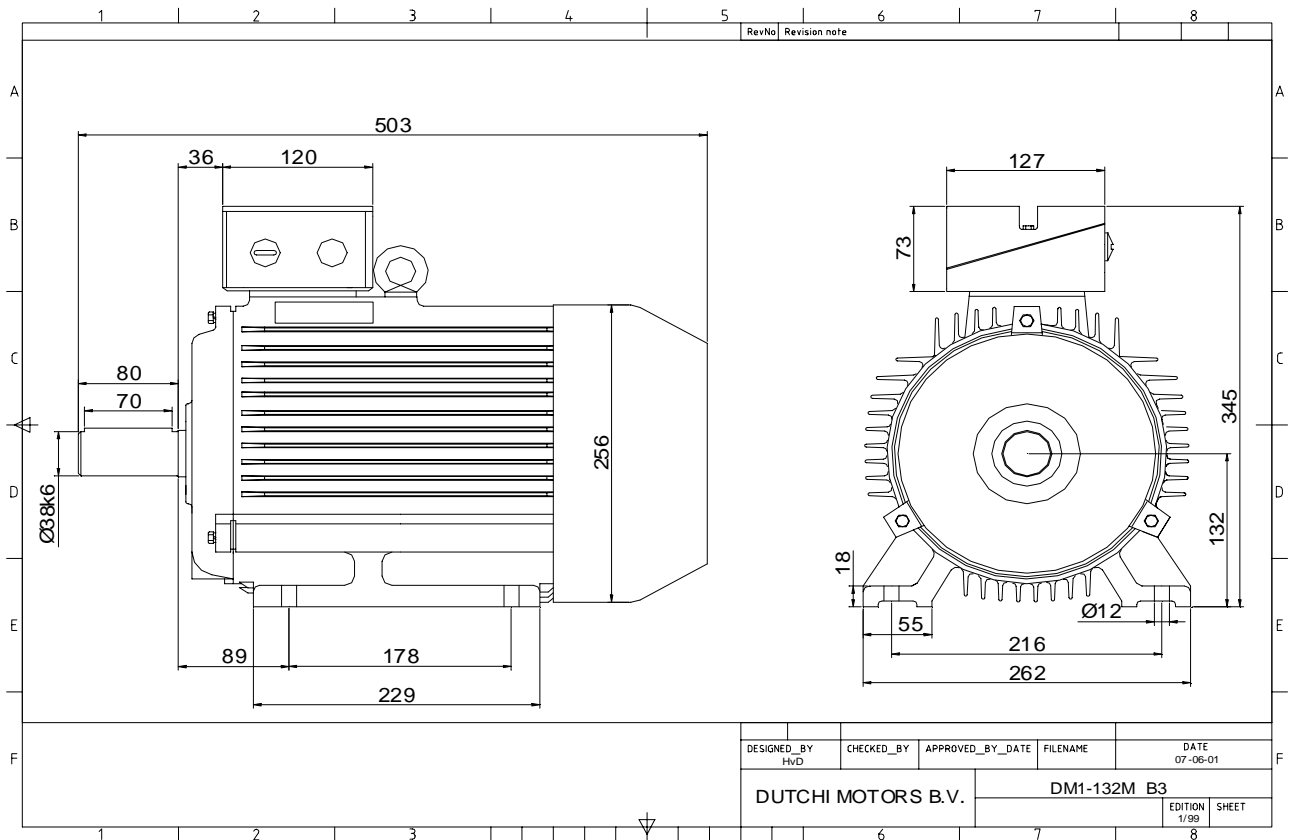


Power is our commodity, the world is our market !



Specification **IEC 60034-1**
 Manufacturer **Dutchi Motors B.V.**
 Motor type **DM1-HE 132M4**
 Rated power **7,50** kW **S1** duty
 Speed **1456** r.p.m
 Voltage **400** / **690** V
 Frequency **50** Hz
 Connection **Δ** / **Y**
 Amps full load **14,49** / **8,37** A
 Amps no-load(400V) **6,70** A
 Enclosure **IP 55**
 Insulation Class **F (temp. rise B (80 K))**

Max. coolant temp. **40°C**
 Max. altitude **1.000** mtr, above sea level
 Comment **3 x PTC 150°C**
 Cable entries **2 x M32x1,5 + 1 x M20x1,5 (ptc)**

Feature **Cast-iron motor**
 Weight **kg**
 Catalog no. **11134750DH**
 Warranty **12~18 months**

Efficiency class **EFF 1**
 Load data 100% 75% 50% 25%
 Efficiency **90,3 90,9 90,3 85,9** %
 Power factor **0,83 0,77 0,65 0,44**

Sound pressure level (1m) **47,8** dB(A)
 Resistance R20 (open) **1,34** Ω
 Resistance R20 **Δ 0,89** Ω

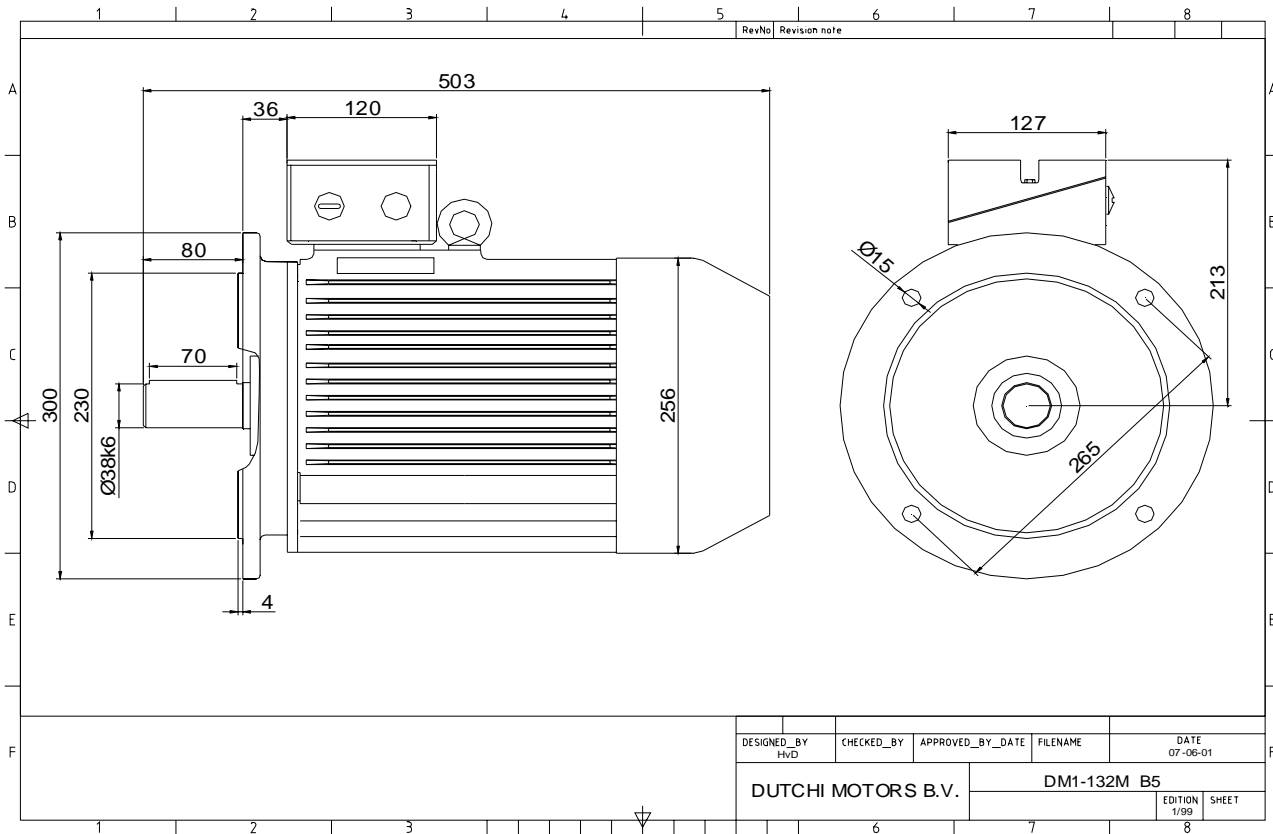
Full load torque **49,19** Nm
 DOL Starting torque vs FL torque **2,50**
 DOL Pull up torque vs FL torque **1,88**
 DOL Pull out torque vs FL torque **3,80**
 Star-Delta Starting torque vs FL torque **0,78**
 Star-Delta Pull up torque vs FL torque **0,59**
 Star-Delta Pull out torque vs FL torque **1,19**
 DOL Starting current vs FL current **7,61**
 Star Delta Starting current vs FL current **2,38**

Rotor Inertia **kgm2**

Bearing DE **6308 - ZZ C3**
 Bearing NDE **6308 - ZZ C3**

WI	Change	date	sign.
Dutchi Motors B.V. P.O. Box 5390 NL-6802 EJ ARNHEM Tel : +31-(0)26 - 3541 600 Fax : +31-(0)26 - 3541 650		Description	date
		Drawing made by :	19-04-04
		dutchi.motors@dutchi.nl www.dutchi.com	

Power is our commodity, the world is our market !



Specification	IEC 60034-1
Manufacturer	Dutchi Motors B.V.
Motor type	DM1-HE 132M4
Rated power	7,50 kW S1 duty
Speed	1456 r.p.m
Voltage	400 / 690 V
Frequency	50 Hz
Connection	Δ / Y
Amps full load	14,49 / 8,37 A
Amps no-load(400V)	6,70 A
Enclosure	IP 55
Insulation Class	F (temp. rise B (80 K))
Max. coolant temp.	40°C
Max. altitude	1.000 mtr, above sea level
Comment	3 x PTC 150°C
Cable entries	2 x M32x1,5 + 1 x M20x1,5 (ptc)
Feature	Cast-iron motor
Weight	kg
Catalog no.	11234750DH
Warranty	12~18 months

Efficiency class	EFF 1			
Load data	100%	75%	50%	25%
Efficiency	90,3	90,9	90,3	85,9 %
Power factor	0,83	0,77	0,65	0,44
Sound pressure level (1m)				47,8 dB(A)
Resistance R20 (open)				1,34 Ω
Resistance R20	Δ			0,89 Ω
Full load torque				49,19 Nm
DOL Starting torque vs FL torque				2,50
DOL Pull up torque vs FL torque				1,88
DOL Pull out torque vs FL torque				3,80
Star-Delta Starting torque vs FL torque				0,78
Star-Delta Pull up torque vs FL torque				0,59
Star-Delta Pull out torque vs FL torque				1,19
DOL Starting current vs FL current				7,61
Star Delta Starting current vs FL current				2,38
Rotor Inertia				kgm ²
Bearing DE				6308 - ZZ C3
Bearing NDE				6308 - ZZ C3

WI	Change	date	sign.
Dutchi Motors B.V. P.O. Box 5390 NL-6802 EJ ARNHEM Tel : +31-(0)26 - 3541 600 Fax : +31-(0)26 - 3541 650		Discription Drawing made by :	date 19-04-04
dutchi.motors@dutchi.nl www.dutchi.com		sign. HvD	